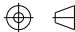


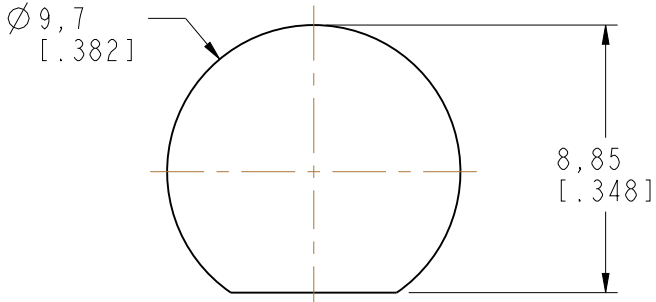
NOTES:

1. MATERIALS AND FINISHES:  
  
BODY - ZINC DIECAST, NICKEL PLATING  
CONTACT - PHOSPHOR BRONZE, GOLD PLATING  
INSULATOR - DELRIN, NATURAL  
LOCK WASHER & SOLDER TAG - BRASS, NICKEL PLATED

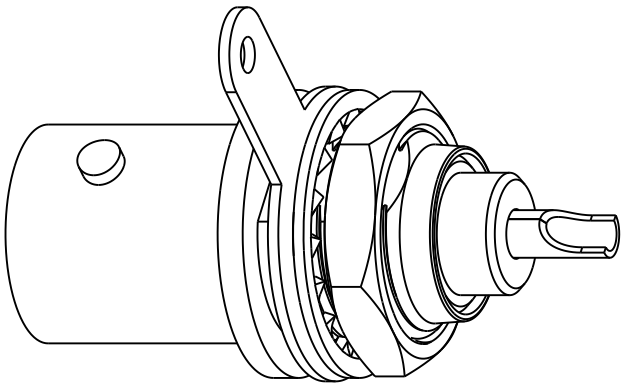
THIRD ANGLE PROJ.



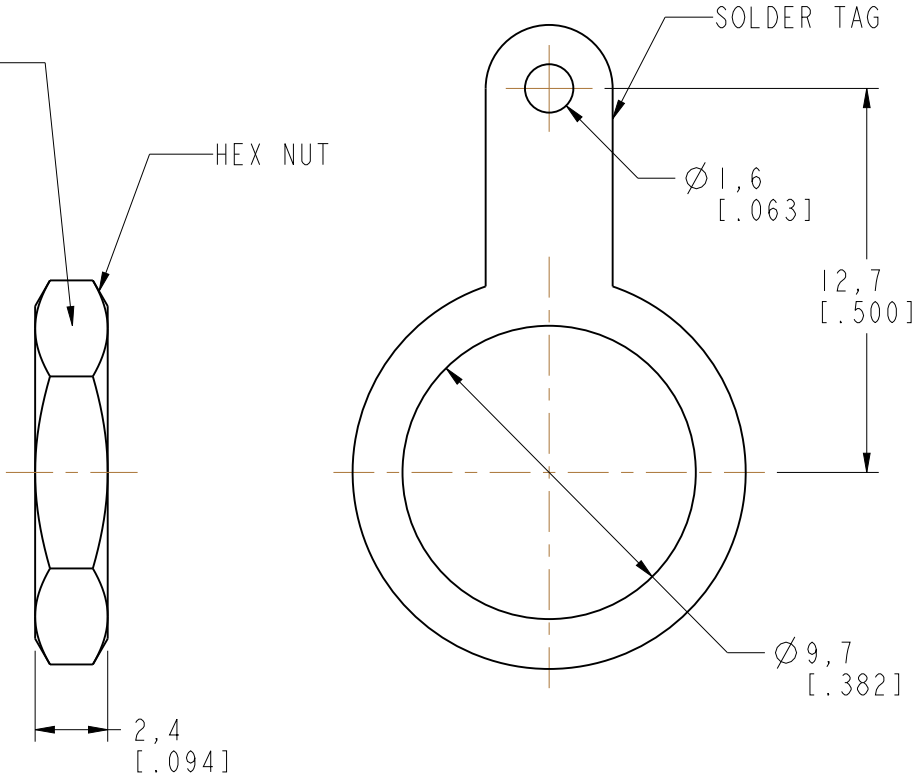
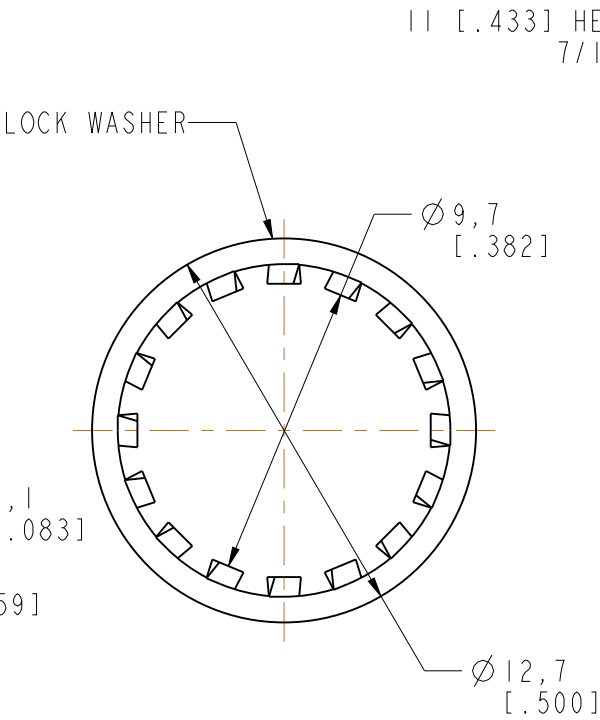
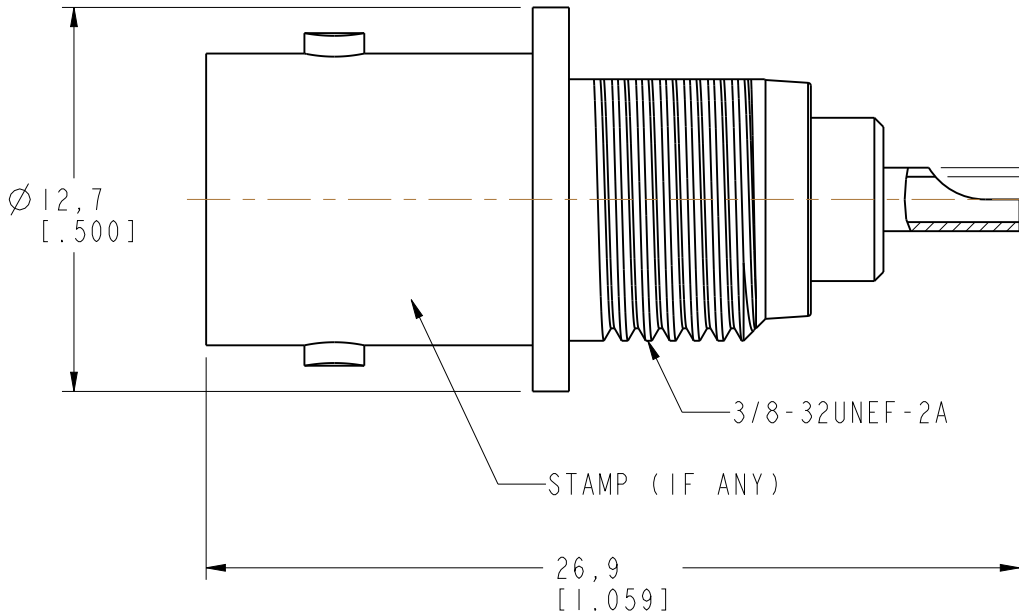
| REVISIONS |   |           |       |      |
|-----------|---|-----------|-------|------|
| REV       | DESCRIPTION   | DATE      | ECO   | APPR |
| A         | RELEASE TO MFG.                                     | 5/3/91    | 38063 | DR   |
| B         | UPDATE HEX NUT PART PLATING SPEC.                   | 13-Feb-15 |       | SH   |
| H         | SEE SHEET I   | 11/24/00  | 43339 | CPM  |
| J         | SYNC, UPDATE THE DRAWING FORMAT \RD-DM16052501S2    | 13-Apr-16 | 00884 | SH   |
| K         | ADD PACKAGING INFORMATION IN NOTE5 \RD-DM17021601S2 | 25-Oct-16 | 03103 | KEN  |



RECOMMENDED MOUNTING  
HOLE DIMENSIONS



SCALE 3.000



**CUSTOMER OUTLINE DRAWING**  
ALL OTHER SHEETS ARE FOR INTERNAL USE ONLY

|  |           |          |           |                                 |  |                             |  |
|--|-----------|----------|-----------|---------------------------------|--|-----------------------------|--|
| UNLESS OTHERWISE SPECIFIED, DIMENSIONS ARE IN METRIC AND TOLERANCES ARE:<br><0.5mm      0.5 - 6mm      6 - 30mm      30 - 120mm      ANGLES<br>± 0.05mm      ±0.1mm      ±0.2mm      ± 0.3mm      ±1°<br><br>NOTICE - These drawings, specifications, or other data (1) are, and remain the property of Amphenol corp. (2) must be returned upon request; and (3) are confidential and not to be disclosed to any person other than those to whom they are given by Amphenol Corp. the furnishing of these drawings, specifications, or other data by Amphenol Corp., or to any other person to anyone for any purpose is not to be regarded by implication or otherwise in any manner licensing, granting rights to permitting such holder or any other person to manufacture, use or sell any product, process or design, patented or otherwise, that may in any way be related to or disclosed by said drawings, specifications, or other data. | MATERIAL  | DRAWN    | DATE      | TITLE                           |  | Amphenol RF                 |  |
|  | -         | S.DUAN   | 23-Feb-17 |                                 |  |                             |  |
|  |           | ENGINEER | DATE      | BNC BULKHEAD<br>RECEPTACLE JACK |  | www.amphenolrf.com          |  |
|  |           | S.HSIEH  | 08-Sep-06 |                                 |  |                             |  |
|  | REFERENCE | APPROVED | DATE      | SCALE: 2.0:1.0                  |  | SHEET 3 OF 3                |  |
|  | AND       | S.HSIEH  | 27-Feb-17 |                                 |  |                             |  |
| CONFIGURATION LEVEL: In Work   | CAD FILE  |          |           | DWG SIZE                        |  | REV                         |  |
| FINISH   |           |          |           |                                 |  |                             |  |
|  |           |          |           |                                 |  | DRAWING NO. B6351D4-ND3G-50 |  |
|  |           |          |           |                                 |  | ITEM NO. 016351AAFOIND5F    |  |
|  |           |          |           |                                 |  | PART NO. 112575             |  |