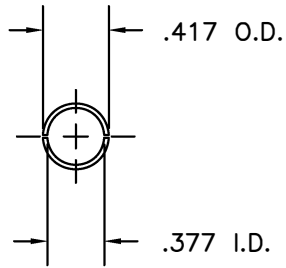
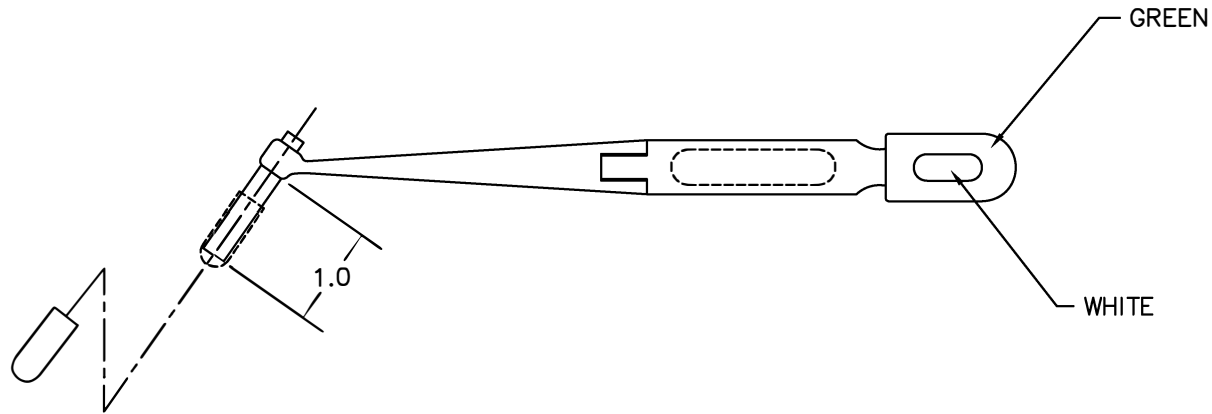
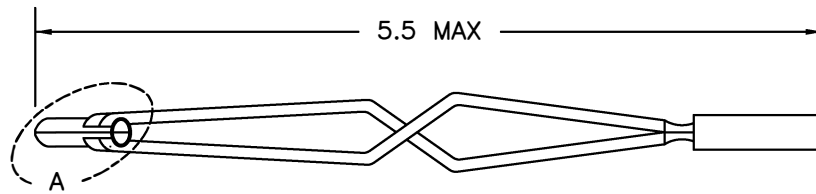


REVISIONS				
REV. SYM.	E.C.O. NUMBER	DESCRIPTION	BY DATE	APP'D DATE
1		ORIGINAL RELEASE	JWJ 9/20/05	RRR 9/20/05




VIEW A



1. REFERENCE: AMPHENOL SOCAPEX #177-809943-00.

NOTES:

RESTRICTED & CONFIDENTIAL CONFIDENTIAL PROPERTY OF DANIELS MANUFACTURING CORP. NOT TO BE DISCLOSED TO OTHERS, REPRODUCED OR USED FOR ANY OTHER PURPOSE, EXCEPT AS AUTHORIZED IN WRITING BY DANIELS MANUFACTURING. MUST BE RETURNED TO DANIELS MANUFACTURING CORP. ON COMPLETION OF ORDER OR OTHER PURPOSE FOR WHICH LENT.				ITEM	PART NO.	QTY.	DESCRIPTION/REMARKS		
DO NOT SCALE DRAWING				DRN.	J. JOYCE	DATE 9/20/05	 DANIELS MANUFACTURING CORP. ORLANDO, FLORIDA CAGE 11851		
				CHK'D.	RRR	DATE 9/20/05			
				APP'D.		DATE			
				APP'D.		DATE			
				NOTE: THIS DRAWING IS AN OUTLINE DRAWING OF THE RESPECTIVE DMC PART NUMBER INDICATED. ACTUAL DMC PART NUMBER IS DRAWING NUMBER WITHOUT THE "-ENV" SUFFIX.		TITLE REMOVAL TOOL #4 ENVELOPE DRAWING			
				WHERE USED:		SIZE	SCALE	CAD P/N	SHEET OF
						B	NTS	DRK592-ENV	1 1
						POSTING	DWG. NO.		REV.
							DRK592-ENV		1