



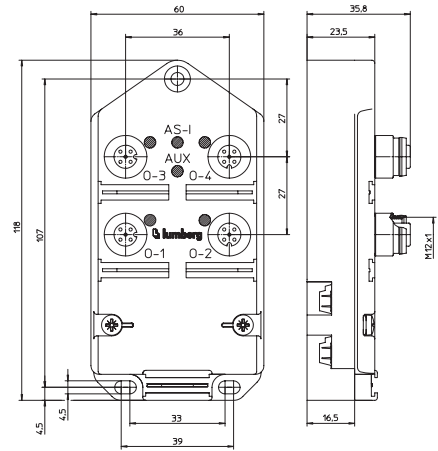
0910 ASL 403



AS-Interface Module with 4-Digital Outputs

4 OUT

AS-Interface flat cable module with 4 digital outputs to connect standard actuators, combined M12 socket.



Bit Assignment

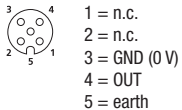
| Bit | - | - | - | - | 3 | 2 | 1 | 0 |
|---------------|-------------------|---|---|---|-----|-----|-----|-----|
| | M12 Output | | | | | | | |
| Byte 0 | - | - | - | - | 0-4 | 0-3 | 0-2 | 0-1 |

Diagnostic Indication

| LED | Indication | Condition |
|--------|------------|----------------------------------|
| 0-1..4 | yellow | channel status |
| U-AS-i | green | AS-Interface power supply active |
| AUX | green | actuator supply active |

Pin Assignments

Output M12





Be Certain with Belden

AS-Interface Module with 4-Digital Outputs

0910 ASL 403

Technical Data

Environmental

| | |
|-----------------------------|---------------------------------|
| Degree of protection | IP 67 |
| Operating temperature range | -25°C (-13°F) to +80°C (+176°F) |
| Weight | 200 g |
| Housing material | PUR |

Bus system

| | |
|------------------------|-------|
| AS-Interface profile | 8.0 |
| I/O configuration | 8 hex |
| ID code | 0 hex |
| Support A/B addressing | no |

AS-Interface

Electronics power supply

| | |
|-----------------------------|------------------|
| Rated voltage | AS-Interface net |
| Voltage range | 26.5–31.6 V DC |
| Power consumption | max. 75 mA |
| Reverse polarity protection | yes |
| Indication | LED green |

AS-Interface

Output power supply

| | |
|-----------------------------|----------------|
| Rated voltage | 24 V DC |
| Voltage range | 10–30 V |
| Potential separation | present |
| Reverse polarity protection | yes/electronic |
| Indication | LED green |

AUX

Outputs

| | |
|----------------------------|------------------------|
| Rated output current | 2 A per channel |
| Short circuit-proof | yes |
| Max. output current | 4 A per module |
| Overload-proof | yes |
| Number of digital channels | 4 |
| Channel type N.O. | p-switching |
| Channel status indicator | LED yellow per channel |

Type 2 A acc. to IEC 61131-21-2

Included in delivery / Accessories

| | |
|------------------|-----------|
| Dust covers M12 | 2 pieces |
| Attachable label | 10 pieces |

Part Number

0910 ASL 403



The application of these products in harsh environments should always be checked before use.
Specifications subject to alteration.