

0.5mm Pitch

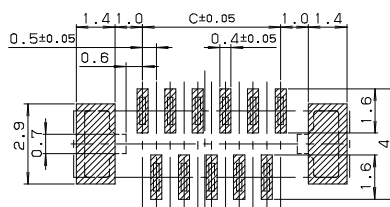
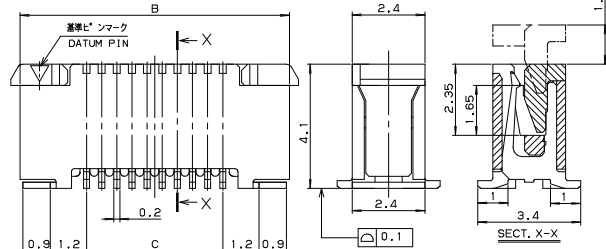
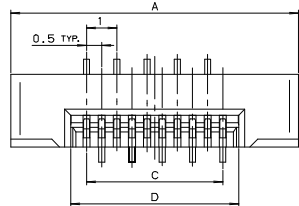
SERIES

6214

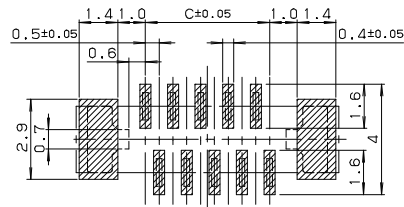
0.5mmピッチ ストレート SMT 片面接点 スライドロック

0.5mmPitch Vertical SMT Single-sided contact Slide lock

● 標準タイプ Standard Slider



基板取付寸法 (奇数ピン)
MOUNTING LAYOUT (ODD PIN)

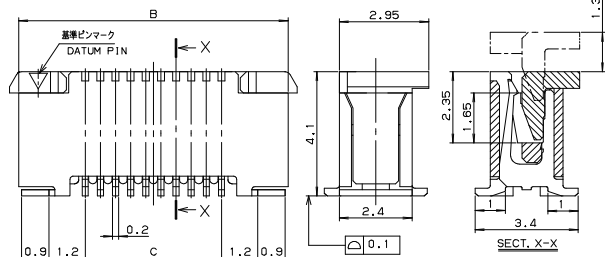
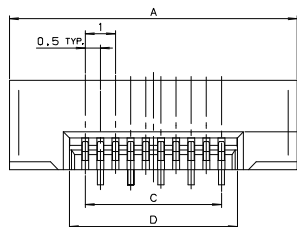


基板取付寸法 (偶数ピン)
MOUNTING LAYOUT (EVEN PIN)

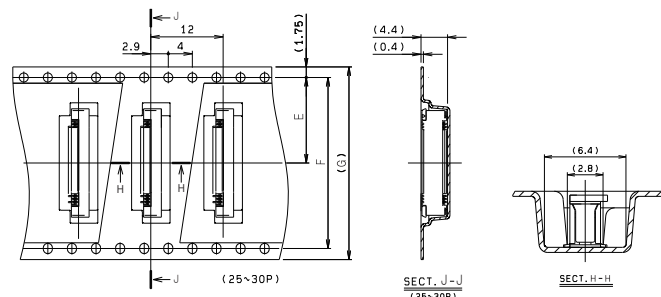
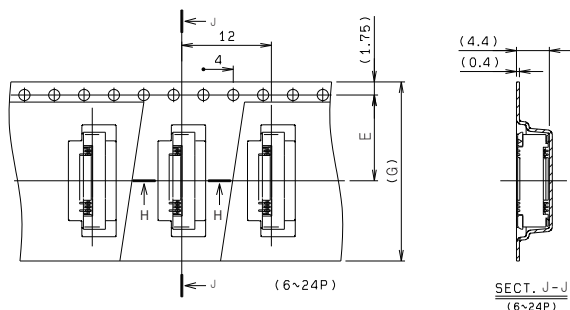
| | FPC | | FFC | |
|----|--|-----------|--|--|
| | 1 | 2 | 1 | 2 |
| M | 0.5±0.12 | 0.5±0.1 | 0.5±0.1 | 0.5±0.08 |
| P | 0.5±0.02 | 0.5±0.05 | 0.5±0.03 | 0.5±0.05 |
| C | C±0.03 | C±0.05 | C±0.03 | C±0.05 |
| W | W±0.07 | W±0.07 | W±0.07 | W±0.07 |
| WP | 0.35 ^{+0.04} _{-0.03} | 0.35±0.05 | 0.35 ^{+0.05} _{-0.02} | 0.35 ^{+0.05} _{-0.02} |

適用FPC, FFC寸法
APPLICABLE FPC, FFC

● スライダー拡張タイプ Extended Slider



| 極数 NO. OF POS. | A | B | C | D | E | F | G |
|----------------------|------|------|------|------|------|------|------|
| 6 | 7.5 | 6.9 | 2.5 | 3.6 | 7.5 | — | 16.0 |
| 7 | 8.0 | 7.4 | 3.0 | 4.1 | 7.5 | — | 16.0 |
| 8 | 8.5 | 7.9 | 3.5 | 4.6 | 7.5 | — | 16.0 |
| 9 | 9.0 | 8.4 | 4.0 | 5.1 | 11.5 | — | 24.0 |
| 10 | 9.5 | 8.9 | 4.5 | 5.6 | 11.5 | — | 24.0 |
| 11 | 10.0 | 9.4 | 5.0 | 6.1 | 11.5 | — | 24.0 |
| 12 | 10.5 | 9.9 | 5.5 | 6.6 | 11.5 | — | 24.0 |
| 13 | 11.0 | 10.4 | 6.0 | 7.1 | 11.5 | — | 24.0 |
| 14 | 11.5 | 10.9 | 6.5 | 7.6 | 11.5 | — | 24.0 |
| 15 | 12.0 | 11.4 | 7.0 | 8.1 | 11.5 | — | 24.0 |
| 16 | 12.5 | 11.9 | 7.5 | 8.6 | 11.5 | — | 24.0 |
| 17 | 13.0 | 12.4 | 8.0 | 9.1 | 11.5 | — | 24.0 |
| 18 | 13.5 | 12.9 | 8.5 | 9.6 | 11.5 | — | 24.0 |
| 19 | 14.0 | 13.4 | 9.0 | 10.1 | 11.5 | — | 24.0 |
| 20 | 14.5 | 13.9 | 9.5 | 10.6 | 11.5 | — | 24.0 |
| 21 | 15.0 | 14.4 | 10.0 | 11.1 | 11.5 | — | 24.0 |
| 22 | 15.5 | 14.9 | 10.5 | 11.6 | 11.5 | — | 24.0 |
| 23 | 16.0 | 15.4 | 11.0 | 12.1 | 11.5 | — | 24.0 |
| 24 | 16.5 | 15.9 | 11.5 | 12.6 | 11.5 | — | 24.0 |
| 25 | 17.0 | 16.4 | 12.0 | 13.1 | 14.2 | 28.4 | 32.0 |
| 26 | 17.5 | 16.9 | 12.5 | 13.6 | 14.2 | 28.4 | 32.0 |
| 27 | 18.0 | 17.4 | 13.0 | 14.1 | 14.2 | 28.4 | 32.0 |
| 28 | 18.5 | 17.9 | 13.5 | 14.6 | 14.2 | 28.4 | 32.0 |
| 29 | 19.0 | 18.4 | 14.0 | 15.1 | 14.2 | 28.4 | 32.0 |
| 30 | 19.5 | 18.9 | 14.5 | 15.6 | 14.2 | 28.4 | 32.0 |



注文コード / Ordering Code

梱包数量: 1,000 個/リール
PACKING QUANTITY: 1,000/Reel

● 標準タイプ Standard Slider

Part No. 04 6214 0XX 000 XXX+

極数 No. of Pos.

800+: スズ銅めっき Sn-Cu Plated
846+: 金めっき Au Plated

● スライダー拡張タイプ Extended Slider

Part No. 04 6214 0XX 010 XXX(/)+

極数 No. of Pos.

800+: スズ銅めっき Sn-Cu Plated
846+: 金めっき Au Plated

RoHS 対応品
RoHS Compliant Product

生産対応可能極数については、営業部にご確認願います。
Feel free to contact our sales department for available numbers of positions.