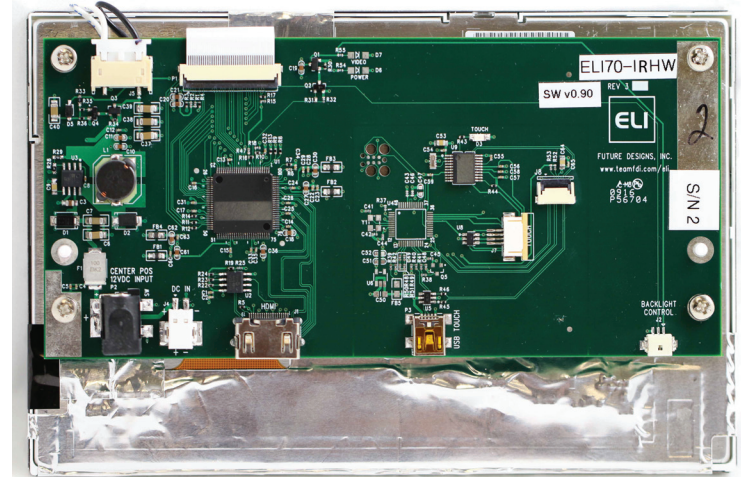


# FDI

# ELI

## 7.0" High Bright Resistive Touch Screen LCD Module for SBCs



Compatible  
With:



i.MX



## ELI70-IRHW

- High Bright Extended Temperature Version
- 7.0" WVGA LCD Panel with LED Backlight
- MSRP (Qty Volume): <\$225.00
- MSRP (Qty 1): \$275.00

## Features

- 4-Wire Resistive Touch Screen with USB Device Interface
- Plug and Play interface to standard SBCs
- HDMI or DVI Input
- +12 Volt DC Input Power ( $\pm 5\%$  tolerance)
- 640 nits Brightness (typical)
- 1000:1 Contrast Ratio (typical)
- EDID Support for Automatic Screen Sizing
- $-30^{\circ}$  to  $+80^{\circ}$  C operating temperature range
- Franchised Distribution Stocking
- Part Number: ELI70-IRHW

Available From:



## Specifications

- Screen Size (inches): 7.0
- Touch Screen Type: 4-Wire Resistive
- Display Technology: IPS a-Si TFT LCD
- Touch Screen Interface: USB Device
- Brightness (nits typ): 640
- Resolution: 800 x 480 (WVGA)
- Contrast Ratio (typ): 1000 : 1
- Aspect Ratio: Wide 16:9
- Colors: 262K (18 bit)
- Horizontal Viewing Angle:  $85^{\circ}$  /  $85^{\circ}$
- Vertical Viewing Angle:  $85^{\circ}$  /  $85^{\circ}$
- Surface Finish: Anti-glare
- Touch Panel Hardness:  $\geq 3H$
- Touch Panel Force (gF max): 120
- Active Area (in mm) (W x H): 152.40 x 91.44
- Response Time (ms typ): 30 tr + rf
- Backlight (# LEDs) : 21 (75 x 3P)
- Backlight Life (K hrs typ): 70
- Backlight Power Consumption (mW typ): 3,960
- EDID for Auto Screen Sizing: Yes
- Display Interface Input Mode: HDMI / DVI
- USB Power Consumption: Device
- Input VDC: 12
- Power Consumption (mA typ/max): 600/900
- Operating Temperature:  $-30^{\circ}$  to  $80^{\circ}$  C
- Storage Temperature:  $-40^{\circ}$  to  $90^{\circ}$  C
- Mounting: M3-0.50 screw mounts in 4 corners
- Plug & Play with Standard SBCs: Yes
- Size: 166.1 (W) x 108.2 (H) x 29.0 (D) mm
- Weight (grams typ): 360
- RoHS Compliant: Yes



[www.teamfdi.com](http://www.teamfdi.com)  
(256) 883-1240



@TeamFDI  
#TeamFDI



Youtube.com/  
FDIProducts