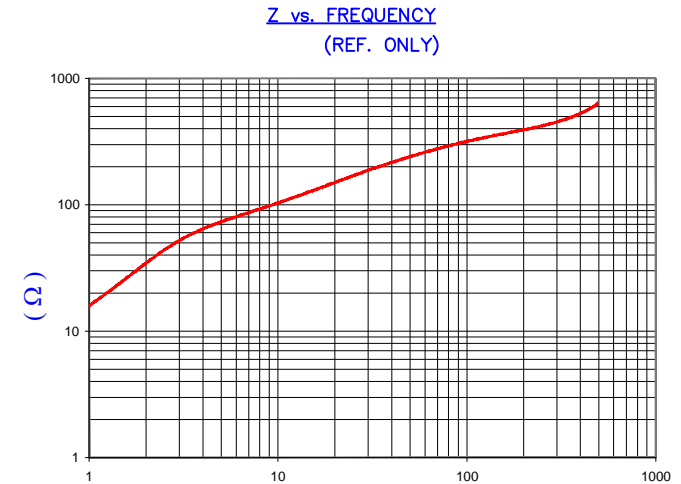


DETAIL "A"  
CHAMFER  
SCALE=8:1

IMPEDANCE ( Z )			
Frequency	25 MHz	100 MHz	300 MHz
Nominal (REF)	170 Ω	310 Ω	450 Ω
Minimum	- Ω	248 Ω	- Ω



AGILENT E4991A Impedance/Material Analyzer  
HP 16092A Test Fixture

FERRITE CORE DIMENSIONS (SPEC): mm/inches

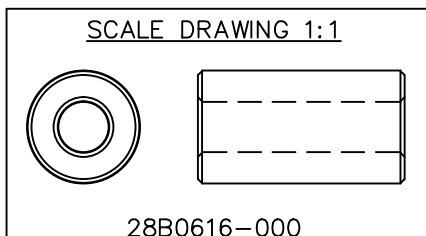
A	15.65 [.616]	±	0.30 [.012]
B	6.99 [.275]	±	0.15 [.006]
C	28.58 [1.125]	±	0.76 [.030]

WEIGHT/1000 21.64 kgs [47.7 Lbs]

NOTES: UNLESS OTHERWISE SPECIFIED

1. COSMETIC SPECIFICATION REFER TO WI-QA-038.

**UNCONTROLLED DOCUMENT**



DIMENSIONS ARE IN MM [INCHES].				This print is the property of Laird Tech. and is loaned in confidence subject to return upon request and with the understanding that no copies shall be made without the written consent of Laird Tech. All rights to design or invention are reserved.		<b>Laird</b>	
J	UPDATE THE LOGO	05/13/15	QIU	PROJECT/PART NUMBER: <b>28B0616-000</b>	REV <b>J</b>	DRAWN BY: DJB	MATERIAL: <b>Ferrite</b>
H	UPDATE COMPANY LOGO	03/09/09	JRK				
G	UPDATE PRINT FORMAT & Z SPECS	03/26/03	JRK	DATE: 6/20/90	SCALE: 2:1		
F	UPDATE PRINT FORMAT COR PART WGT	10/14/02	JRK	CAD # 28B0616-000-J	TOOL # B0616		
E	UPDATE TO CNZ FORMAT ADD Z CURVE REM COATING SPEC CHG P/N TO -000	09/10/02	JRK				
D	UPDATE PRINT FORMAT ADD CHAMFER DETAIL	04/18/02	JRK				
C	CHG P/N TO 28B0616-00*, ADD COATING SPECS	03/17/99	I.S.				
B	UPDATED P/N FOR NEW CATALOG	10/26/95	JBE				
REV	DESCRIPTION	DATE	INT				