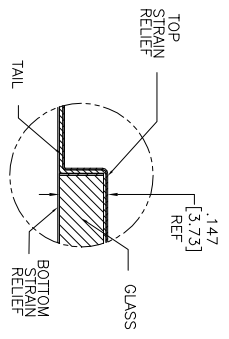
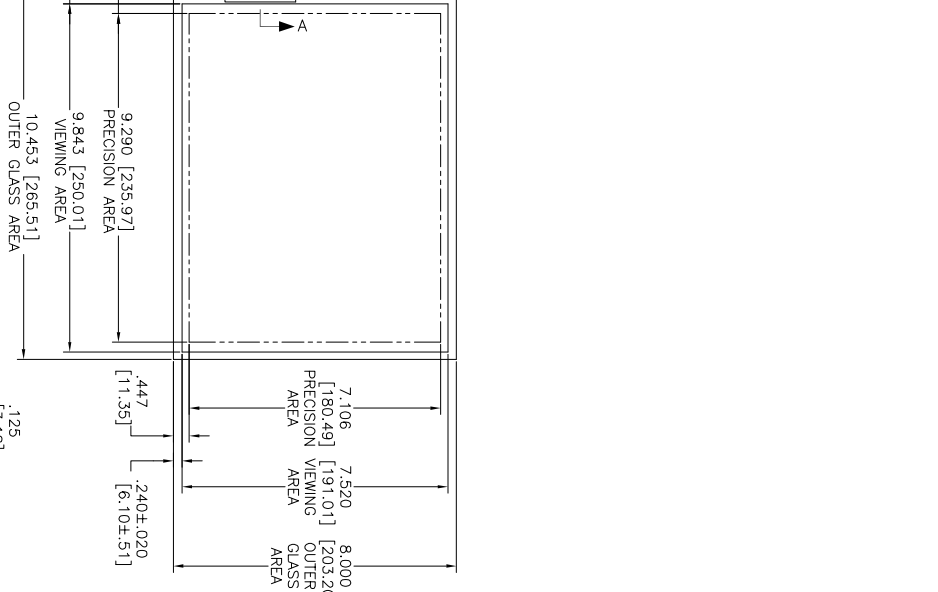
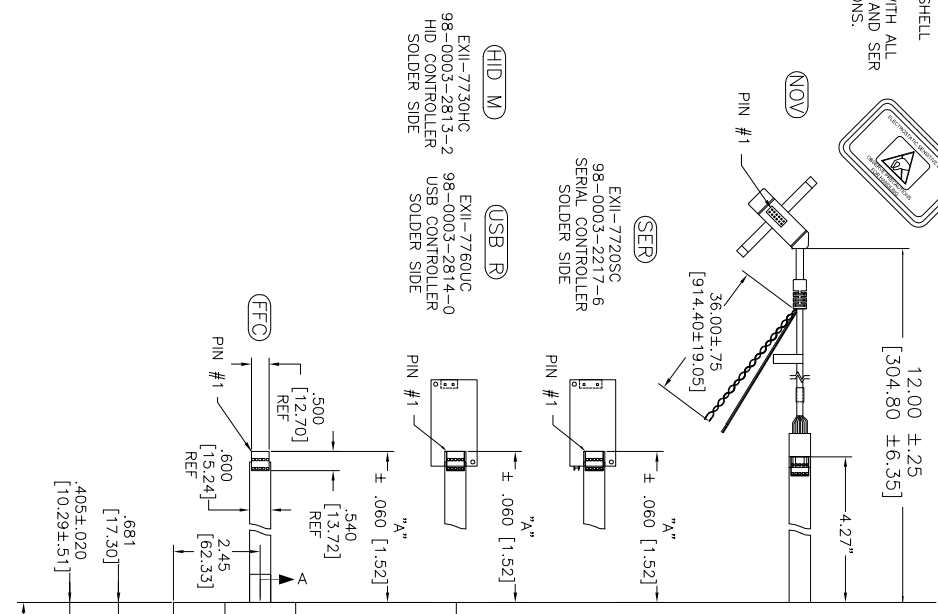


OGA DIAGONAL: 13.16 [334.34]
 VA DIAGONAL: 12.39 [314.63]
 PA DIAGONAL: 11.70 [297.08]

ESD CLAMSHELL CASE IS USED WITH ALL NOV, USB AND SER TERMINATIONS.



TOP LEVEL NUMBER	US NUMBER	CHINA NUMBER	TYPE	DM "A" (TOTAL GLASS TO CONNECTOR)	A/G FINISH	PROD SPEC
17-8581-203	98-0003-2633-4	59-0000-0156-6	FFC	4.27" [108.46]	AG500	23655
17-8581-205	98-0003-2634-2	N/A	FFC	8.00" [203.20]	AG500	23655
17-8581-206	98-0003-2635-9	N/A	NOV	SEE DWG	AG500	23655
17-8581-221	98-0003-2637-5	59-0000-0158-2	SER	4.27" [108.46]	AG500	23655
17-8581-227	98-0003-2639-1	N/A	SER	8.00" [203.20]	AG500	23655
17-8581-218	98-0003-3272-0	59-0000-0157-4	USB R	4.27" [108.46]	AG500	23655
17-8581-230	98-0003-2994-0	59-0000-0159-0	HID M	8.00" [203.20]	AG500	23655

NOTES:
 1. WEIGHT OF GLASS IN GRAMS: 411±10% HOUSING ORIENTED WITH LATCH DOWN

PINOUT	LR	LL	SHLD	UL	UR
1	LR				
2	LL				
3	SHLD				
4	UL				
5	UR				

UNITS: INCHES [MM]
 TOLERANCES UNLESS OTHERWISE SPECIFIED
 .XX ±.03 [.76]
 .XXX ±.015 [.38]
 ANGLES ±1°
 DIMS K CROWLEY 9/05

MARKETING DRAWING
 SCT32NN 12.39"

REV	REVISED PER	CO	DATE	BY
J	REVISED PER	CO 033533	1/12	SB
H	REVISED PER	CO 033455	8/11	SB
07	REVISED PER	CO 030452	6/09	SB

DO NOT SCALE DRAWING
 SCALE 1 = 1
 DWG NO. 28159-MKT
 SHEET 1 OF 1
 REV J