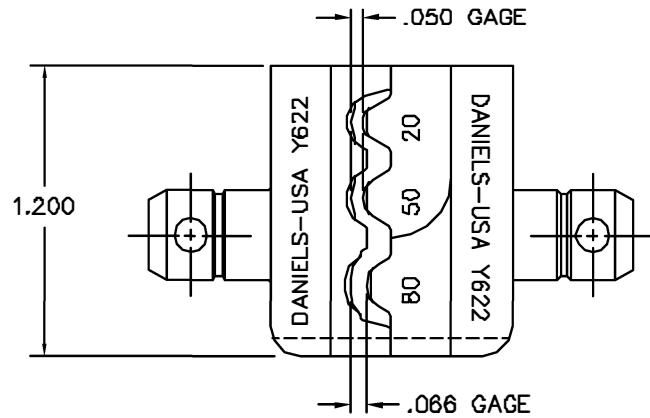
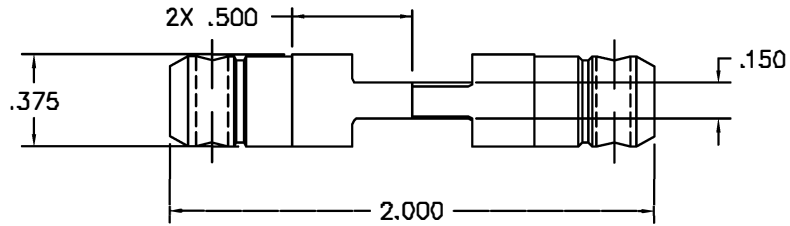



REVISIONS				
REV. SYN.	E.C.D. NUMBER	DESCRIPTION	BY DATE	APP'D DATE
1		ORIGINAL RELEASE	PB 5/21/80 LCV 6/80	



**UNCONTROLLED DOCUMENT
WILL NOT BE UPDATED**

1. REFERENCE T&B WT137.

NOTES:

<p>RESTRICTED & CONFIDENTIAL</p> <p>CONFIDENTIAL PROPERTY OF DANIELS MANUFACTURING CORP. NOT TO BE DISCLOSED TO OTHERS, REPRODUCED OR USED FOR ANY OTHER PURPOSE, EXCEPT AS AUTHORIZED IN WRITING BY DANIELS MANUFACTURING. MUST BE RETURNED TO DANIELS MANUFACTURING CORP. ON COMPLETION OF ORDER OR OTHER PURPOSE FOR WHICH LENT.</p>	MATERIAL	ITEM	PART NO.	QTY.	DESCRIPTION/REMARKS	
	HEAT TREAT	DIRN	PD	DATE 5/21/80	 <p>DANIELS MANUFACTURING CORP. ORLANDO, FLORIDA GAGE 11851</p>	
		CHK'D	YGV	DATE 5/23/80		
	FINISH	APP'D	AAM	DATE 5/22/80		TITLE
APP'D			DATE	WHERE USED:		SIZE B SCALE 2X CAD P/N Y622-ENV SHEET 1 OF 1
DO NOT SCALE DRAWING		NOTE:	THIS DRAWING IS AN OUTLINE DRAWING OF THE RESPECTIVE DMC PART NUMBER INDICATED. ACTUAL DMC PART NUMBER IS DRAWING NUMBER WITHOUT THE "-ENV" SUFFIX.			
		POSTING	DWG. NO.	REV.		
			Y622-ENV	1		