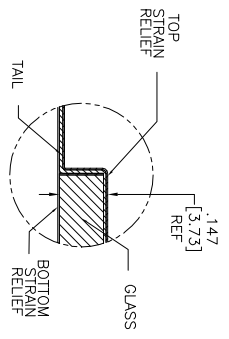
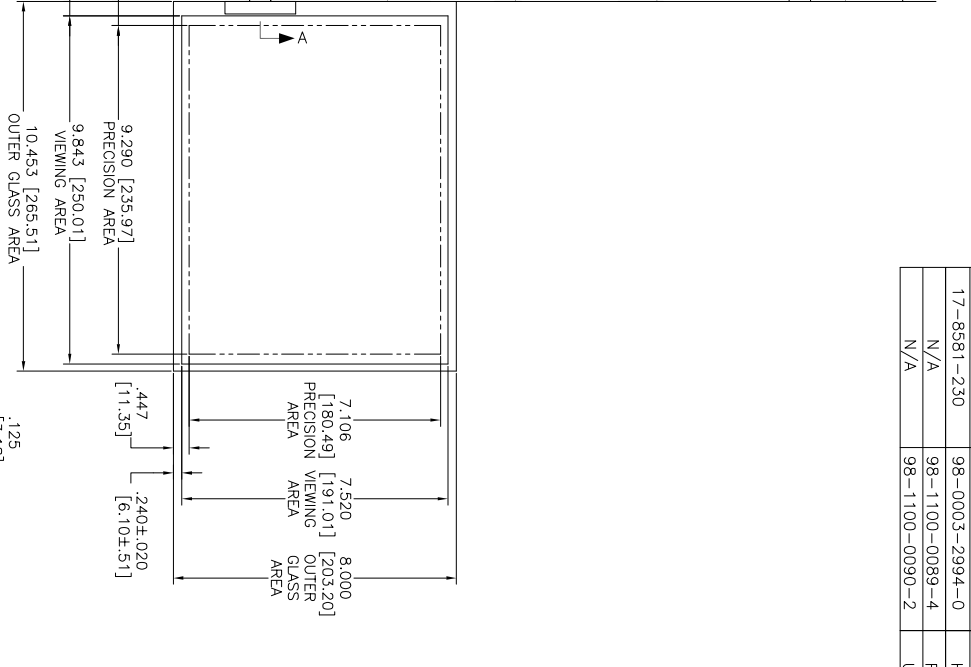
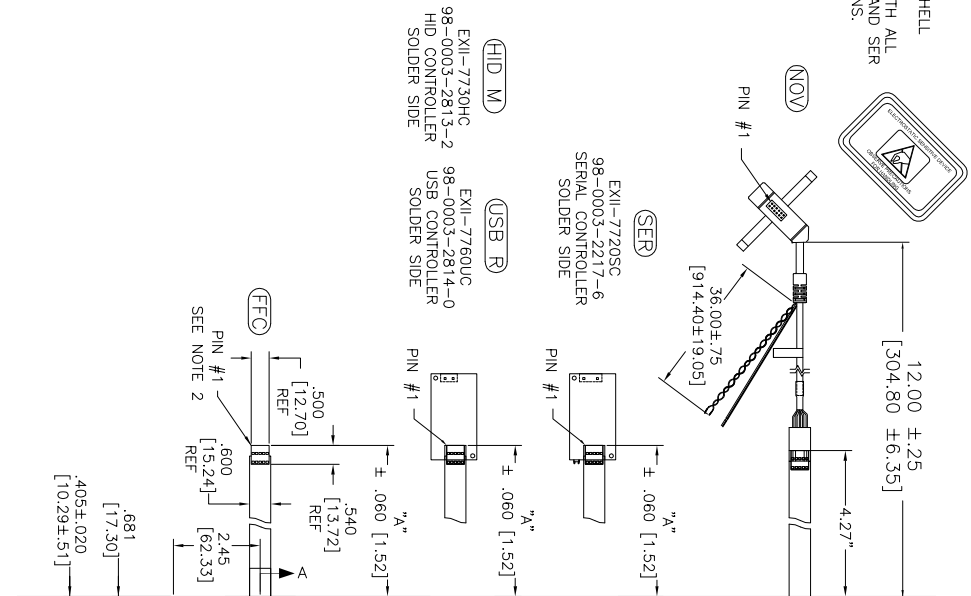


OGA DIAGONAL: 13.16 [334.34]
 VA DIAGONAL: 12.39 [314.63]
 PA DIAGONAL: 11.70 [297.08]

ESD CLAMSHELL
 CASE IS USED WITH ALL
 NOV, USB AND SER
 TERMINATIONS.



TOP LEVEL NUMBER	US NUMBER	TYPE	DM "A" (TOTAL GLASS TO CONNECTOR)	A/G FINISH	PROD SPEC
17-8581-203	98-0003-2633-4	FFC	4.27" [108.46]	AG500	23655
17-8581-205	98-0003-2634-2	FFC	8.00" [203.20]	AG500	23655
17-8581-206	98-0003-2635-9	NOV	SEE DWG	AG500	23655
17-8581-221	98-0003-2637-5	SER	4.27" [108.46]	AG500	23655
17-8581-222	98-0003-2639-1	SER	8.00" [203.20]	AG500	23655
17-8581-218	98-0003-3272-0	USB R	4.27" [108.46]	AG500	23655
17-8581-230	98-0003-2994-0	HID M	8.00" [203.20]	AG500	23655
N/A	98-1100-0089-4	FFC	8.00" [203.20]	WC100	34523
N/A	98-1100-0090-2	USB R	8.00" [203.20]	WC100	34523

- NOTES:
1. WEIGHT OF GLASS IN GRAMS: 4.11 ± 10%
 2. NICOMATIC HOUSING P/N: OLOS
 3. NICOMATIC RECEPTAGLES (PINS) MATTE TIN PLATED P/N: 14106-12
 4. HOUSING ORIENTED WITH LATCH DOWN

PINOUT	UR	UL	SHLD	LL	LR
1	UR	UL	SHLD	LL	LR
2	UR	UL	SHLD	LL	LR
3	UR	UL	SHLD	LL	LR
4	UR	UL	SHLD	LL	LR
5	UR	UL	SHLD	LL	LR

UNITS: INCHES [MM]

TOLERANCES UNLESS OTHERWISE SPECIFIED

X ± .03 [0.76]
 .XX ± .015 [0.38]
 ANGLES ± 1°

THIRD ANGLE PROJECTION

DO NOT SCALE DRAWING

SCALE: 1 = 1

3M TOUCH SYSTEMS
 3M TOUCH SYSTEMS
 3M TOUCH SYSTEMS
 3M TOUCH SYSTEMS

THIS DOCUMENT IS THE PROPERTY OF 3M TOUCH SYSTEMS. IT IS TO BE USED ONLY FOR THE PROJECT AND FOR WHICH IT WAS PREPARED. NO PART OF THIS DOCUMENT IS TO BE REPRODUCED OR TRANSMITTED IN ANY FORM OR BY ANY MEANS, ELECTRONIC OR MECHANICAL, INCLUDING PHOTOCOPYING, RECORDING, OR BY ANY INFORMATION STORAGE AND RETRIEVAL SYSTEM, WITHOUT THE WRITTEN PERMISSION OF 3M TOUCH SYSTEMS.

MARKETING DRAWING
 SCT32NN 12.39"

REVISED PER CO 036265 4/13 SB
 REVISED PER CO 036099 2/13 SB

DATE DATE DATE

DESIGNER: K CHROWLEY 9/05

SCALE: 1 = 1

DOC NO: TSD-28159

SHEET: 1 OF 1

REV: L