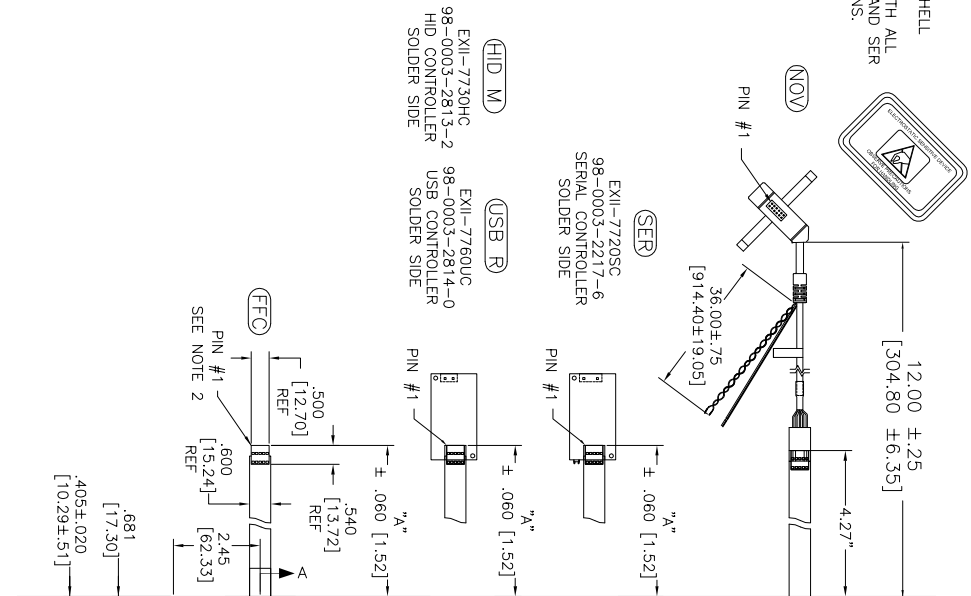


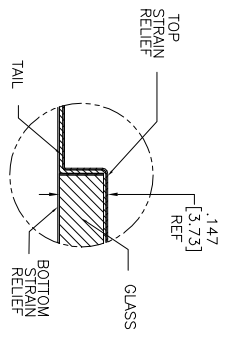
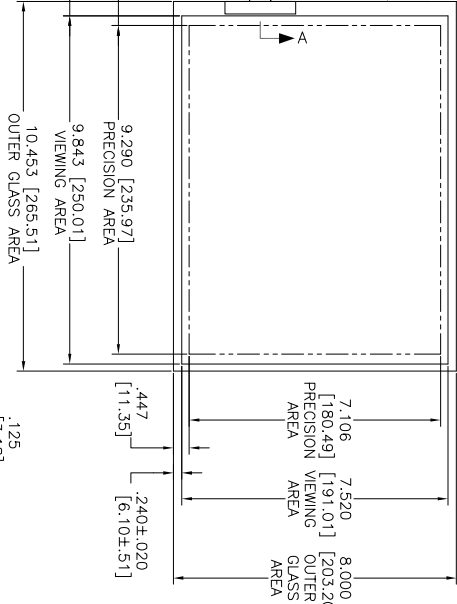
OGA DIAGONAL: 13.16 [334.34]  
 VA DIAGONAL: 12.39 [314.63]  
 PA DIAGONAL: 11.70 [297.08]

ESD CLAMSHELL  
 CASE IS USED WITH ALL  
 NOV, USB AND SER  
 TERMINATIONS.



- NOTES:
1. WEIGHT OF GLASS IN GRAMS: 4111±10%
  2. NICOMATIC HOUSING P/N: OLOS
  3. NICOMATIC RECEPTAGLES (PINS) MATTE TIN PLATED P/N: 14106-12
  4. HOUSING ORIENTED WITH LATCH DOWN

TOP LEVEL NUMBER	US NUMBER	TYPE	DM "A" (TOTAL GLASS TO CONNECTOR)	A/G FINISH	PROD SPEC
17-8581-203	98-0003-2633-4	FFC	4.27" [108.46]	AG500	23655
17-8581-205	98-0003-2634-2	FFC	8.00" [203.20]	AG500	23655
17-8581-206	98-0003-2635-9	NOV	SEE DWG	AG500	23655
17-8581-221	98-0003-2637-5	SER	4.27" [108.46]	AG500	23655
17-8581-222	98-0003-2639-1	SER	8.00" [203.20]	AG500	23655
17-8581-218	98-0003-3272-0	USB R	4.27" [108.46]	AG500	23655
17-8581-230	98-0003-2994-0	HID M	8.00" [203.20]	AG500	23655
N/A	98-1100-0089-4	FFC	8.00" [203.20]	WC100	34523
N/A	98-1100-0090-2	USB R	8.00" [203.20]	WC100	34523



PINOUT	UR	UL	SHLD	LL	LR
1	UR	UL	SHLD	LL	LR
2	UR	UL	SHLD	LL	LR
3	UR	UL	SHLD	LL	LR
4	UR	UL	SHLD	LL	LR
5	UR	UL	SHLD	LL	LR

.147 ± .020 [3.73 ± .51]  
 TOTAL THICKNESS  
 OF GLASS, CABLE  
 AND STRAIN RELIEF

- NOTES:
1. WEIGHT OF GLASS IN GRAMS: 4111±10%
  2. NICOMATIC HOUSING P/N: OLOS
  3. NICOMATIC RECEPTAGLES (PINS) MATTE TIN PLATED P/N: 14106-12
  4. HOUSING ORIENTED WITH LATCH DOWN

UNITS: INCHES [MM]

TOLERANCES UNLESS OTHERWISE SPECIFIED

X ± .03 [.76]  
 .XX ± .015 [.38]  
 ANGLES ± 1°

THIRD ANGLE PROJECTION

DO NOT SCALE DRAWING

SCALE: 1 = 1

DMW K CROWLEY 9/05

© COPYRIGHT 2004  
 3M TOUCH SYSTEMS  
 3M TOUCH SYSTEMS  
 USA  
 THIS DOCUMENT IS THE  
 PROPRIETARY PROPERTY OF  
 3M TOUCH SYSTEMS AND  
 WITHOUT THE WRITTEN PERMISSION  
 OF 3M TOUCH SYSTEMS  
 NO PART OF THIS DOCUMENT  
 MAY BE REPRODUCED OR  
 TRANSMITTED IN ANY FORM  
 OR BY ANY MEANS, ELECTRONIC  
 OR MECHANICAL, INCLUDING  
 PHOTOCOPYING, RECORDING,  
 OR BY ANY INFORMATION  
 STORAGE AND RETRIEVAL  
 SYSTEMS.

REV	DATE	BY	CHKD	APP'D	DESCRIPTION
L	4/13	SB			REVISED PER CO 036265
K	2/13	SB			REVISED PER CO 036099

MARKETING DRAWING  
 SCT32NN 12.39"

DOC FORMAT: AUTOCAD SHEET 1 OF 1

DOC NO: TSD-28159