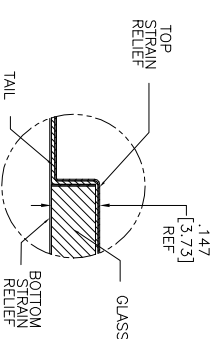
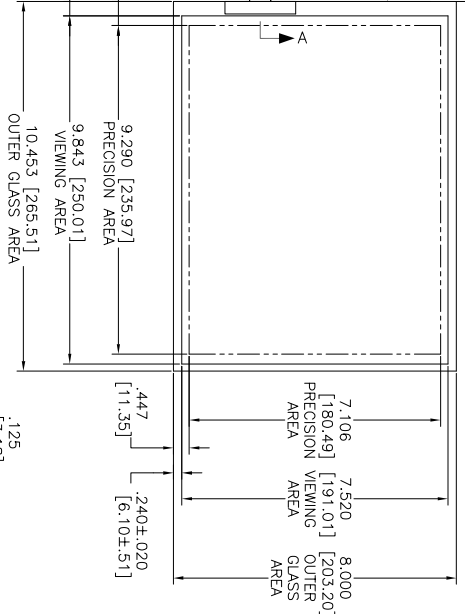
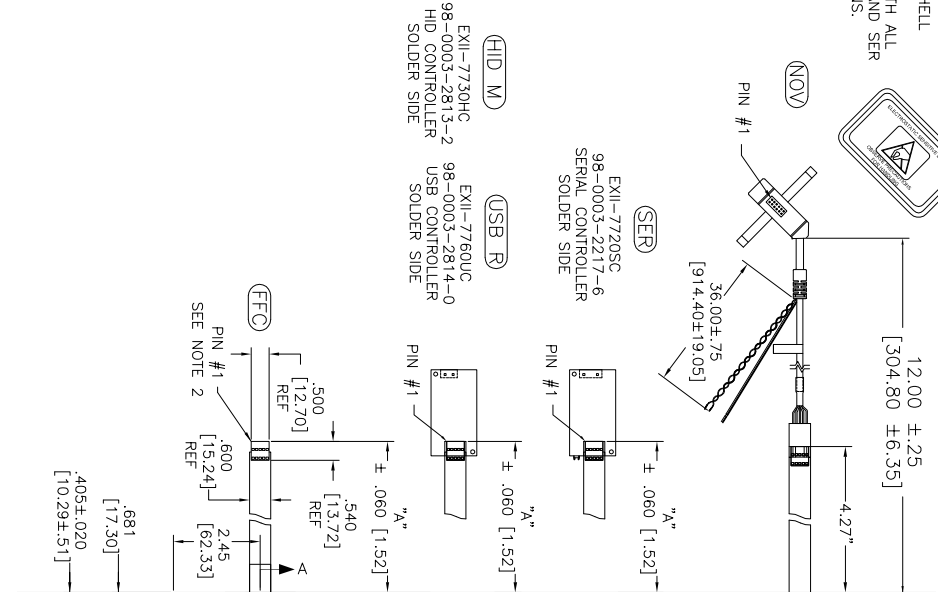


OGA DIAGONAL: 13.16 [334.34]
 VA DIAGONAL: 12.39 [314.63]
 PA DIAGONAL: 11.70 [297.08]

ESD CLAMSHELL CASE IS USED WITH ALL NOV, USB AND SER TERMINATIONS.



TOP LEVEL NUMBER	US NUMBER	TYPE	DM "A" (TOTAL GLASS TO CONNECTOR)	A/G FINISH	PROD SPEC
17-8581-203	98-0003-2633-4	FFC	4.27" [108.46]	AG500	23655
17-8581-205	98-0003-2634-2	FFC	8.00" [203.20]	AG500	23655
17-8581-206	98-0003-2635-9	NOV	SEE DWG	AG500	23655
17-8581-221	98-0003-2637-5	SER	4.27" [108.46]	AG500	23655
17-8581-222	98-0003-2639-1	SER	8.00" [203.20]	AG500	23655
17-8581-218	98-0003-3272-0	USB R	4.27" [108.46]	AG500	23655
17-8581-230	98-0003-2994-0	HID M	8.00" [203.20]	AG500	23655
N/A	98-1100-0089-4	FFC	8.00" [203.20]	WC100	34523
N/A	98-1100-0090-2	USB R	8.00" [203.20]	WC100	34523

PINOUT
1 LR
2 LL
3 SHLD
4 UL
5 UR

.147 ± .020 [3.73 ± .51]
 TOTAL THICKNESS OF GLASS, CABLE AND STRAIN RELIEF

- NOTES:
 1. WEIGHT OF GLASS IN GRAMS: 4.11 ± 10%
 2. NICOMATIC HOUSING P/N: OLOS
 NICOMATIC RECEPTACLES (PINS) MATTE TIN PLATED P/N: 14106-12
 HOUSING ORIENTED WITH LATCH DOWN

UNITS	INCHES [MM]
TOLERANCES UNLESS OTHERWISE SPECIFIED	
X .015 [0.38]	
XXX ± .015 [0.38]	
ANGLES ± 1°	

© COPYRIGHT 2004 3M TOUCH SYSTEMS
 THIS DOCUMENT IS THE PROPERTY OF THE
 COMPANY AND IS NOT TO BE REPRODUCED OR
 TRANSMITTED IN ANY FORM OR BY ANY
 MEANS, WITHOUT THE WRITTEN PERMISSION OF
 3M TOUCH SYSTEMS. PERMISSION FOR USE IS
 GRANTED FOR OTHER THAN 3M AUTHORIZED
 PURPOSES.

MARKETING DRAWING
 SCT32NN 12.39"

REV	DESCRIPTION	DATE	BY
L	REVISED PER CO 036265	4/13	SB
K	REVISED PER CO 036099	2/13	SB
REV	CHANGE NOTICE	DATE	BY

DO NOT SCALE DRAWING	SCALE 1 = 1	DATE	BY
DO NOT SCALE DRAWING	SCALE 1 = 1	9/05	DMW K CHROWLEY
DOC FORMAI	AUTOCAD	SHEET 1 OF 1	REV L
SIZE	DOCUMENT NO.	TSD-28159	