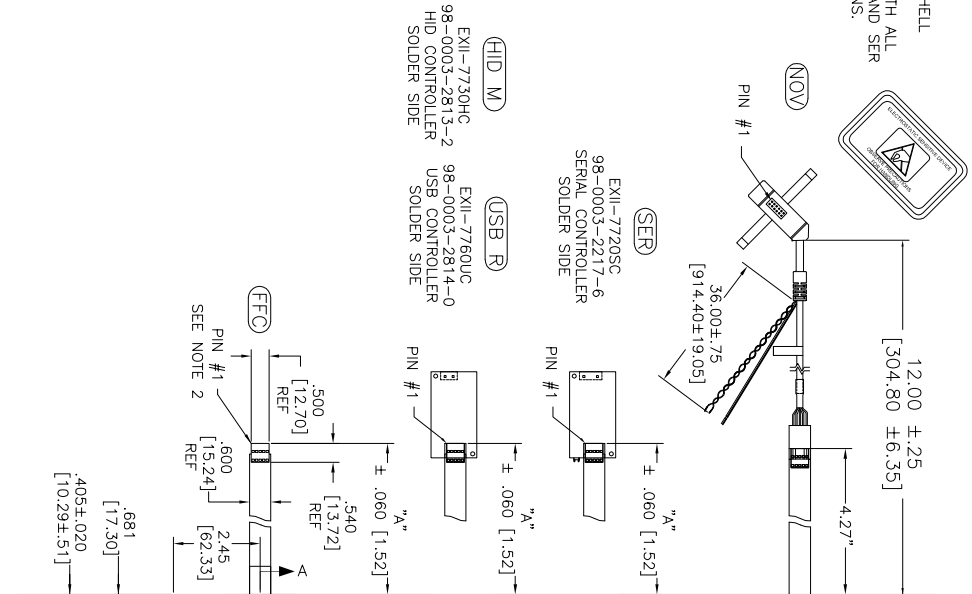
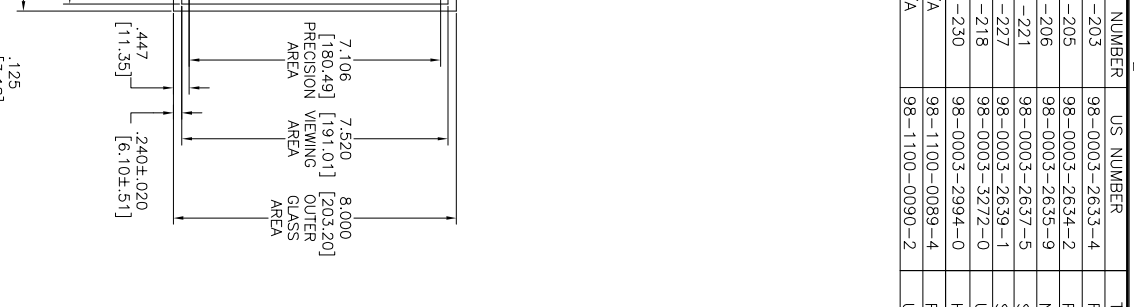


OGA DIAGONAL: 13.16 [334.34]
 VA DIAGONAL: 12.39 [314.63]
 PA DIAGONAL: 11.70 [297.08]

ESD CLAMSHELL CASE IS USED WITH ALL NOV. USB AND SER TERMINATIONS.



TOP LEVEL NUMBER	US NUMBER	TYPE	DM "A" (TOTAL GLASS TO CONNECTOR)	A/G FINISH	PROD. SPEC
17-8581-203	98-0003-2633-4	FFC	4.27" [108.46]	AG500	23655
17-8581-205	98-0003-2634-2	FFC	8.00" [203.20]	AG500	23655
17-8581-206	98-0003-2635-9	NOV	SEE DWG	AG500	23655
17-8581-221	98-0003-2637-5	SER	4.27" [108.46]	AG500	23655
17-8581-222	98-0003-2639-1	SER	8.00" [203.20]	AG500	23655
17-8581-218	98-0003-3272-0	USB R	4.27" [108.46]	AG500	23655
17-8581-230	98-0003-2994-0	HID M	8.00" [203.20]	AG500	23655
N/A	98-1100-0089-4	FFC	8.00" [203.20]	WC100	34523
N/A	98-1100-0090-2	USB R	8.00" [203.20]	WC100	34523



- NOTES:
1. WEIGHT OF GLASS IN GRAMS: 4.11 ± 10%
 2. NICOMATIC HOUSING P/N: OLOS
 3. NICOMATIC RECEPTACLES (PINS) MATTE TIN PLATED P/N: 14106-12 HOUSING ORIENTED WITH LATCH DOWN

PINOUT
1 LR
2 LL
3 SHLD
4 UL
5 UR

UNITS: INCHES [MM]
 DIMENSIONS: DECIMAL FRACTIONS
 TOLERANCES UNLESS OTHERWISE SPECIFIED
 X ± 0.03 [0.76]
 .XX ± 0.015 [0.38]
 ANGLES ± 1°

© COPYRIGHT 2004 3M TOUCH SYSTEMS, USA
 THIS DOCUMENT IS THE PROPRIETARY PROPERTY OF 3M TOUCH SYSTEMS, USA. NO PART OF THIS DOCUMENT IS TO BE REPRODUCED OR TRANSMITTED IN ANY FORM OR BY ANY MEANS WITHOUT THE WRITTEN PERMISSION OF 3M TOUCH SYSTEMS, USA.

MARKETING DRAWING
 SCT32NN 12.39"

REV	DATE	SB
L	4/13	SB
K	2/13	SB

REV	DATE	SB
L	4/13	SB
K	2/13	SB

3M TOUCH SYSTEMS	DATE	9/05
DESIGNED BY	DMW	K. CHROWLEY
CHECKED BY		
SCALE	1 = 1	
DO NOT SCALE DRAWING		
DOC NO.	TSD-28159	
SHEET	1 OF 1	
REV	L	