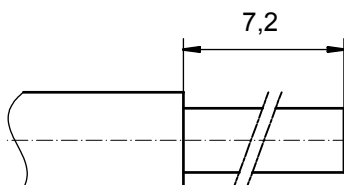


**STRIPPING DIMENSIONS**



Directive 2002/95/EC  
„RoHS“  
Compliant

**NOTES:**

CRIMPING:  
USE CRIMP TOOL: 360X10409X  
WITH TOOL INSERT: 36-000060  
SELECTOR SETTINGS: 7 FOR AWG 10  
6 FOR AWG 12

3	1	REAR SIDE	COPPER ALLOY	min. 8µin HARD GOLD over min. 50µin NICKEL
2	1	RETAINING RING	COPPER ALLOY	NICKEL PLATED
1	1	MATING SIDE	COPPER ALLOY	min. 30µin HARD GOLD over min. 50µin NICKEL
item	quantity	part description	material	plating

APPROVAL # FREIGABE # DEBLOCAGE # AUTORIZACION # APPROVAL	
CUSTOMER APPROVAL DATE:	
NAME:	TITLE:
COMPANY NAME:	
APPROVAL # FREIGABE # DEBLOCAGE # AUTORIZACION # APPROVAL	

partlist			
tolerance ISO 2768-m		dim. in mm	
date		name	
drawn 03.01.08		Schmidt	
appd. 03.01.08		Koch	
norm		title:	
d-old		HIGH POWER CONTACT FEMALE CRIMP VERSION 30A D-SUB COMBINATION	
a Origin		dwg no: Inventor 10	
rev. description date name		13K1A2379	
DO NOT ALTER CAD DRAWING BY HAND		DIN-A3	
OWNERSHIP AND COPYRIGHT OF CONEC GmbH		sh: 1	
WRITTEN PERMISSION:		part no: 13-000311	
BE PASSED ON TO A THIRD PARTY WITHOUT		scale: 8:1	
REPRODUCED IN ANY WAY, AND MAY NOT		material: see partlist	
BE PASSED ON TO A THIRD PARTY WITHOUT		material: see partlist	

