

FIG. 1

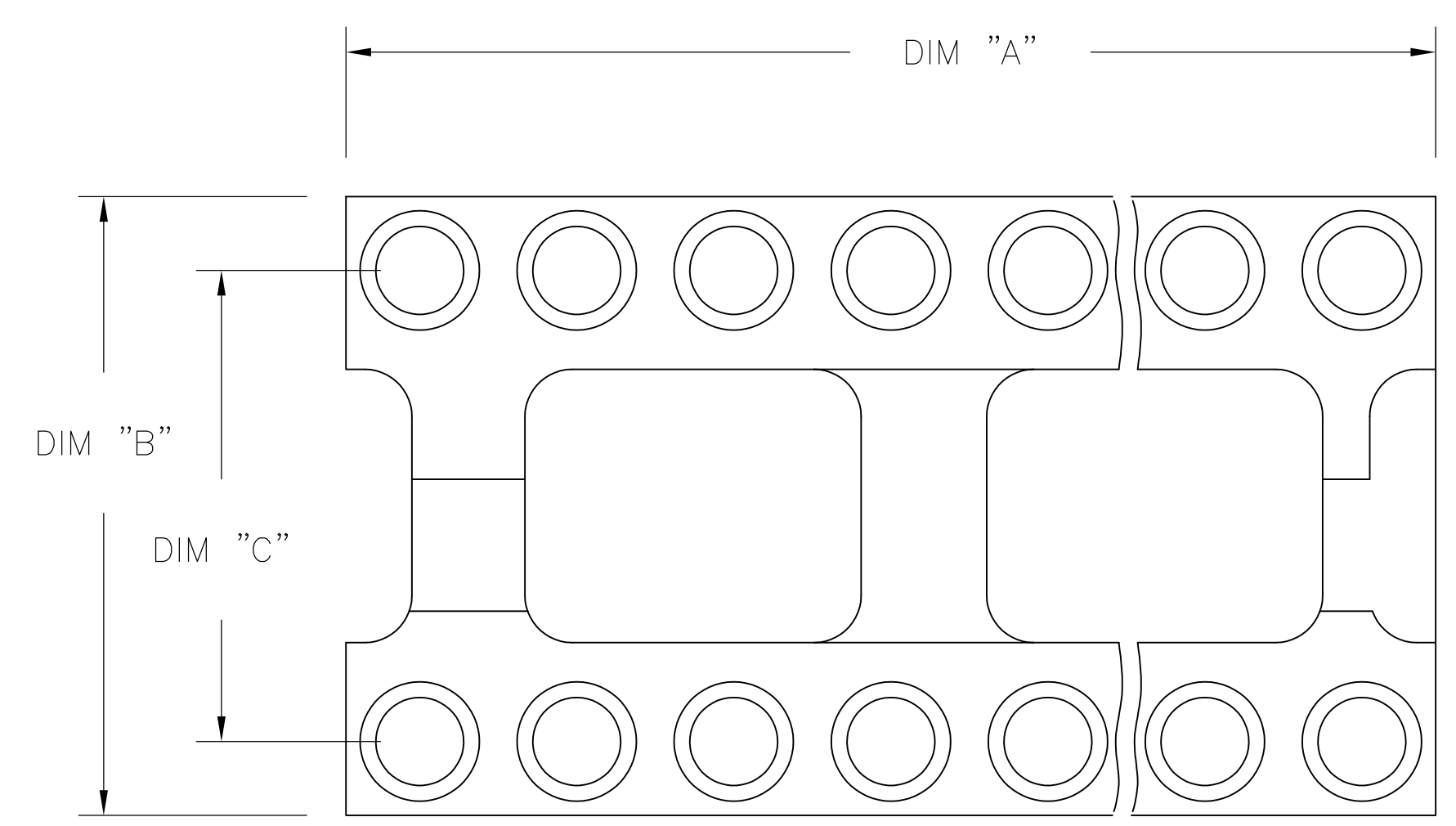


FIG. 2

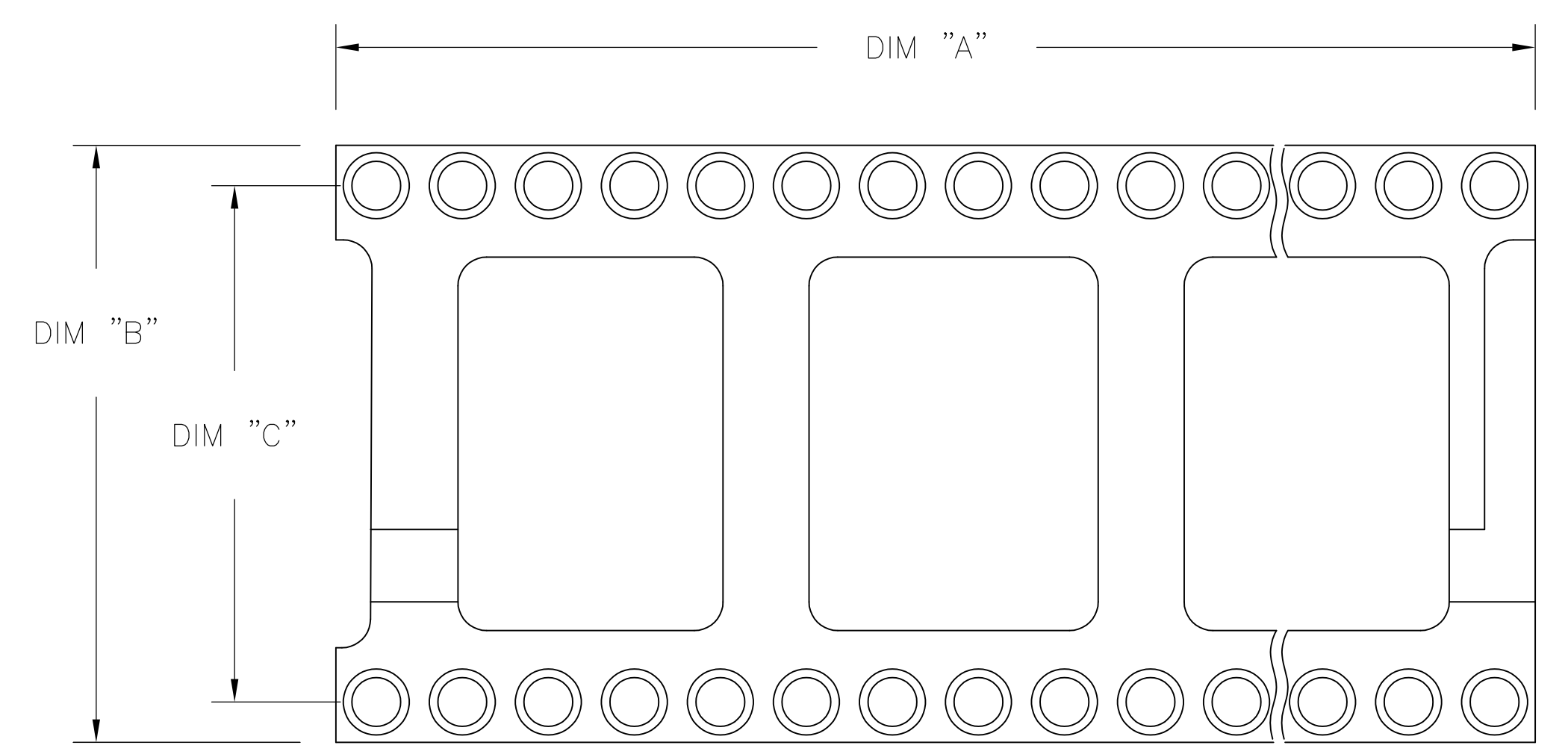
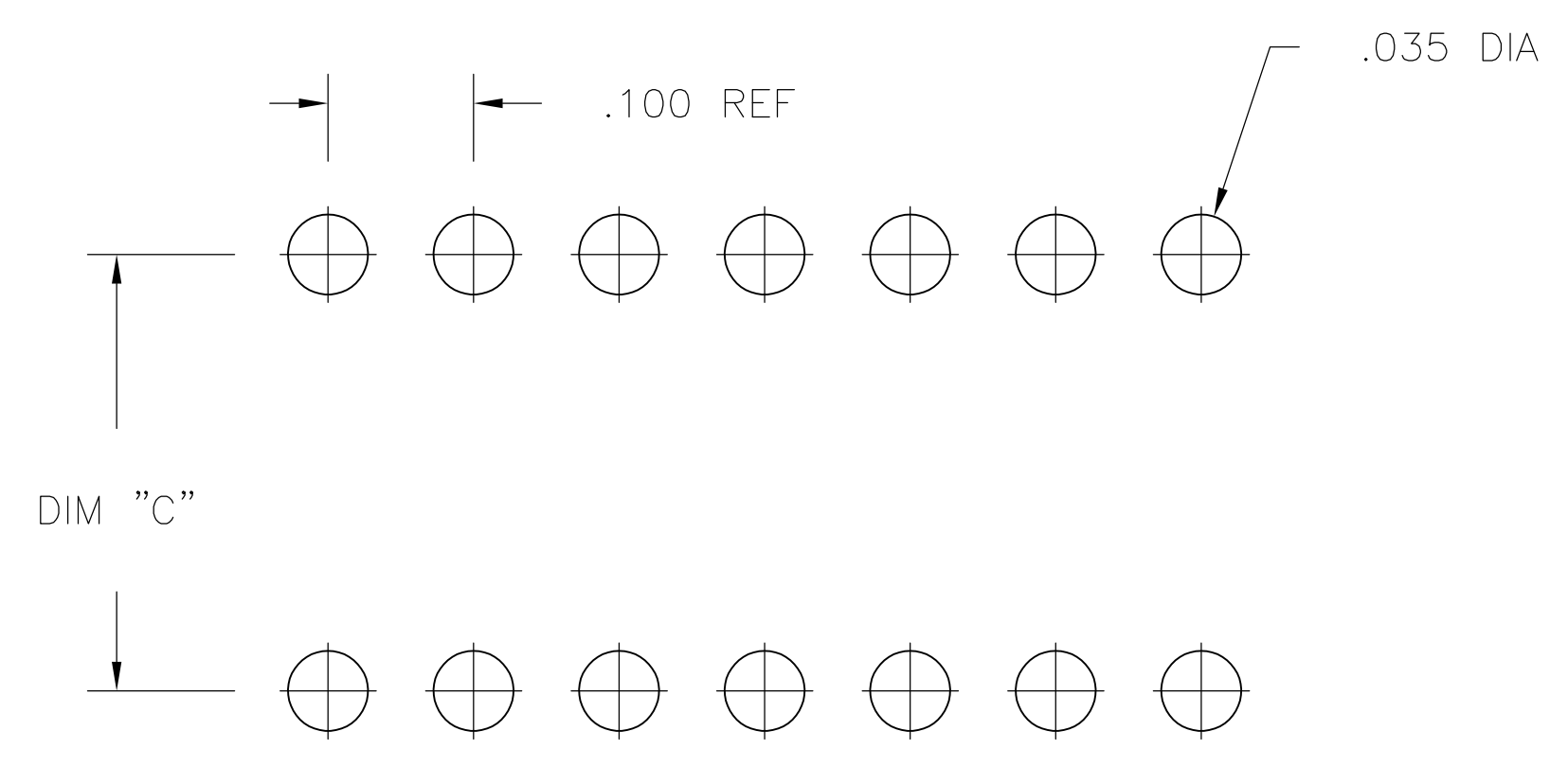
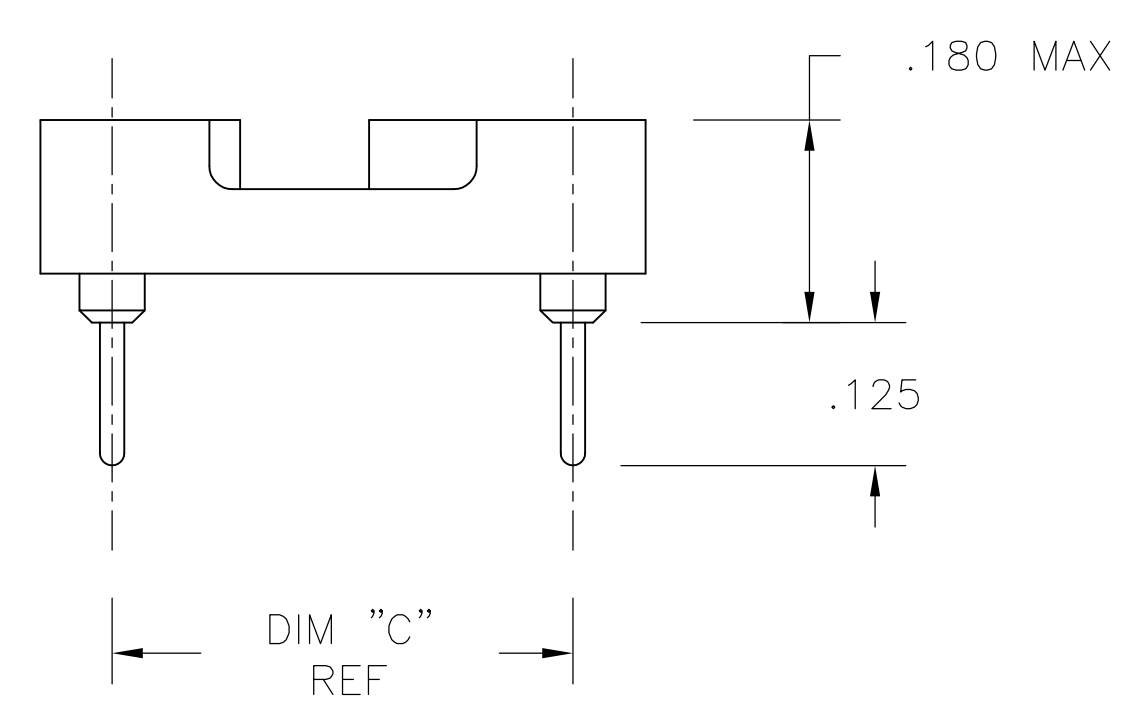
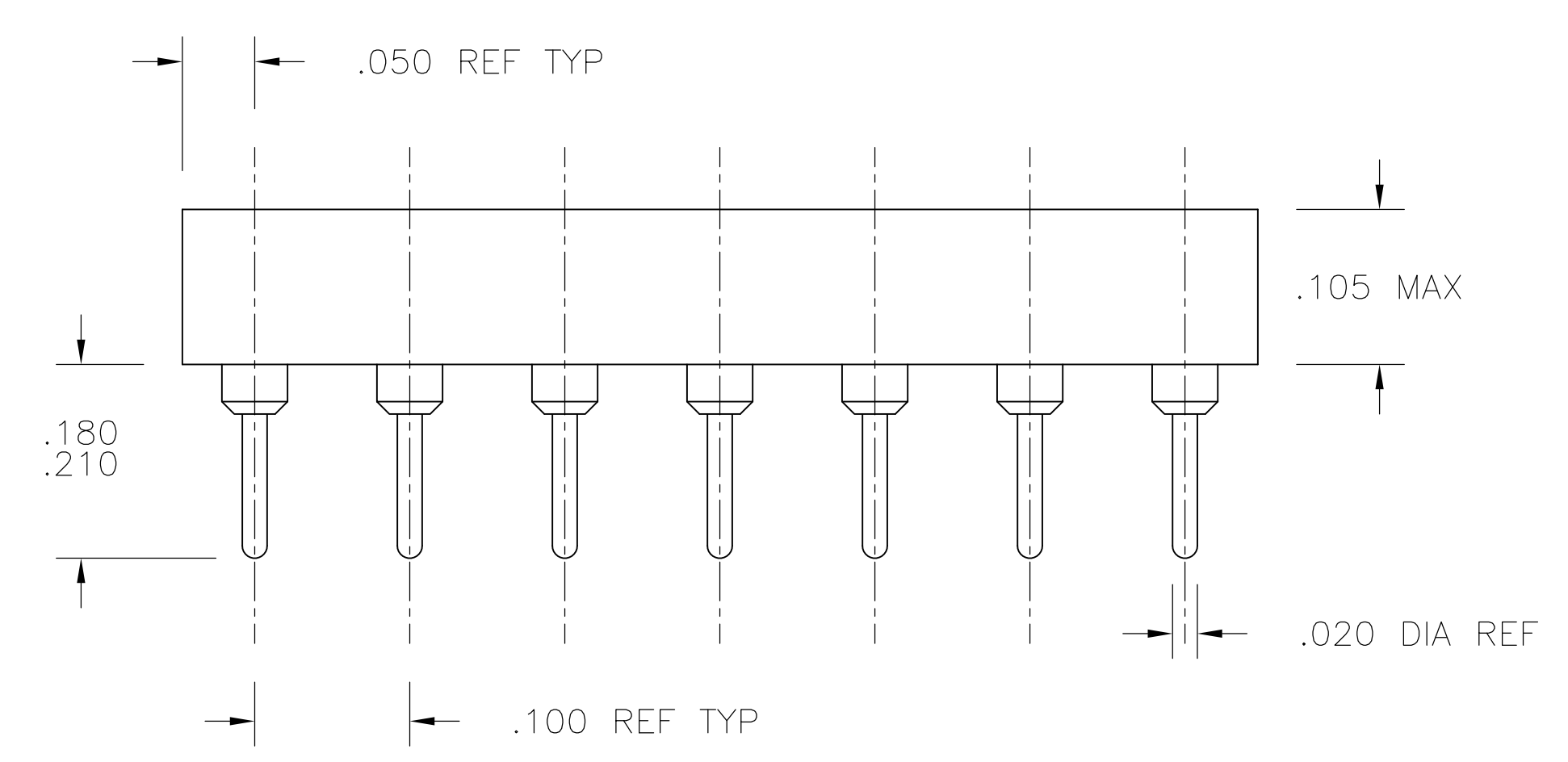


FIG. 3



P.C.B. HOLE LAYOUT
TOLERANCE ±.003

1. INSULATOR MATERIAL - THERMOPLASTIC POLYESTER, PCT, BLACK, UL94 V-0
2. STAMPED CONTACT - BECU, PLATED WITH 80-200μ" TIN (LEAD FREE) OVER 75-100μ" COPPER.
3. SLEEVE - COPPER, PLATED WITH 180-340μ" THK TIN (LEAD FREE) OVER 75-125μ" MIN NICKEL.
5. STAMPED CONTACT-BECU, PLATED WITH GOLD FLASH OVER 50-100μ" NICKEL
6. STAMPED CONTACT-BECU, PLATED WITH 20μ" MIN GOLD OVER 30-100μ" NICKEL.
7. ELECTRICAL:
CONTACT RESISTANCE: 10 MILLIOHMS MAX
CONTACT RATING: 3 AMPS
CAPACITANCE: 1.0 pF PER MIL-STD-202, METHOD 305
INSULATION RESISTANCE: 5000 OHMS MIN @ 500 VDC PER MIL-STD-1344, METHOD 3003.1
DIELECTRIC WITHSTANDING VOLTAGE: 1000 VOLTS (RMS) PER MIL-STD-1344, METHOD 3001.1
8. MECHANICAL:
INSERTION FORCE: 179 GRAMS AVG
WITHDRAWAL FORCE: 63 GRAMS AVG
"ACCEPTS IC PIN - .009"X.015" THROUGH .011"X.020", OR .016" TO .021" DIAMETER, .150/.105 LONG"
9. ENVIRONMENTAL:
OPERATING TEMPERATURE: -55°C TO +105°C
10. OBSOLETE PARTS: OBSOLETE CIS STREAMLINING PER D.RENAUD/D.SINISI

THIS DRAWING IS A CONTROLLED DOCUMENT.		DIN: BSV	27JUL04	TE Connectivity	
DIMENSIONS: INCHES		TOLERANCES UNLESS OTHERWISE SPECIFIED:			
0. PLC ± -		1. PLC ± -		APVD: K. WRIGHT	
1. PLC ± -		2. PLC ± -		NAME: OPEN FRAME DIP, ECONOMY (STAMPED CONTACT)	
2. PLC ± -		3. PLC ± .005		PRODUCT SPEC: (REF AUGAT 800 SERIES)	
3. PLC ± -		4. PLC ANGLES ± -		APPLICATION SPEC: -	
4. PLC ± -		FINISH: SEE NOTES		SIZE: A1	
MATERIAL: SEE NOTES		WEIGHT: -		CAGE CODE: 1571552	
		CUSTOMER DRAWING		SCALE: 4:1	
				SHEET 1 OF 2	
				REV E4	

FINISH CONTACT/SLEEVE	"C" MAX	"B" MAX	"A" MAX	FIG	NO. OF POSN	PART NO.	
$\triangle_{3/6/10}$ OBSOLETE	GOLD/TIN	.400±.005	.500	1.200	2	24	5-1571552-7
$\triangle_{3/6}$	GOLD/TIN	.300±.005	.400	1.200	2	24	5-1571552-6
$\triangle_{3/6}$	GOLD/TIN	.900±.005	1.000	3.200	3	64	5-1571552-5
$\triangle_{3/6}$	GOLD/TIN	.600±.005	.700	2.400	3	48	5-1571552-4
$\triangle_{3/6}$	GOLD/TIN	.600±.005	.700	2.100	3	42	5-1571552-3
$\triangle_{3/6}$	GOLD/TIN	.600±.005	.700	2.000	3	40	5-1571552-2
$\triangle_{3/6}$	GOLD/TIN	.600±.005	.700	1.800	3	36	5-1571552-1
$\triangle_{3/6}$	GOLD/TIN	.600±.005	.700	1.600	3	32	5-1571552-0
$\triangle_{3/6}$	GOLD/TIN	.600±.005	.700	1.400	2	28	4-1571552-9
$\triangle_{3/6}$	GOLD/TIN	.600±.005	.700	1.200	2	24	4-1571552-8
$\triangle_{3/6}$	GOLD/TIN	.400±.005	.500	1.100	2	22	4-1571552-7
$\triangle_{3/6}$	GOLD/TIN	.300±.005	.400	1.000	2	20	4-1571552-6
$\triangle_{3/6}$	GOLD/TIN	.300±.005	.400	.900	2	18	4-1571552-5
$\triangle_{3/6}$	GOLD/TIN	.300±.005	.400	.800	2	16	4-1571552-4
$\triangle_{3/6}$	GOLD/TIN	.300±.005	.400	.400	1	8	4-1571552-3
$\triangle_{3/6}$	GOLD/TIN	.300±.005	.400	.700	2	14	4-1571552-2
$\triangle_{3/5/10}$ OBSOLETE	G F/TIN	.400±.005	.500	1.200	2	24	3-1571552-7
$\triangle_{3/5}$	G F/TIN	.300±.005	.400	1.200	2	24	3-1571552-6
$\triangle_{3/5}$	G F/TIN	.900±.005	1.000	3.200	3	64	3-1571552-5
$\triangle_{3/5}$	G F/TIN	.600±.005	.700	2.400	3	48	3-1571552-4
$\triangle_{3/5}$	G F/TIN	.600±.005	.700	2.100	3	42	3-1571552-3
$\triangle_{3/5}$	G F/TIN	.600±.005	.700	2.000	3	40	3-1571552-2
$\triangle_{3/5}$	G F/TIN	.600±.005	.700	1.800	3	36	3-1571552-1
$\triangle_{3/5}$	G F/TIN	.600±.005	.700	1.600	3	32	3-1571552-0
$\triangle_{3/5}$	G F/TIN	.600±.005	.700	1.400	2	28	2-1571552-9
$\triangle_{3/5}$	G F/TIN	.600±.005	.700	1.200	2	24	2-1571552-8
$\triangle_{3/5}$	G F/TIN	.400±.005	.500	1.100	2	22	2-1571552-7
$\triangle_{3/5}$	G F/TIN	.300±.005	.400	1.000	2	20	2-1571552-6
$\triangle_{3/5}$	G F/TIN	.300±.005	.400	.900	2	18	2-1571552-5
$\triangle_{3/5}$	G F/TIN	.300±.005	.400	.800	2	16	2-1571552-4
$\triangle_{3/5}$	G F/TIN	.300±.005	.400	.700	2	14	2-1571552-3
$\triangle_{3/5}$	G F/TIN	.300±.005	.400	.400	1	8	2-1571552-2
$\triangle_{3/2}$	TIN/TIN	.400±.005	.500	1.200	2	24	1-1571552-7
$\triangle_{3/2}$	TIN/TIN	.300±.005	.400	1.200	2	24	1-1571552-6
$\triangle_{3/2/10}$ OBSOLETE	TIN/TIN	.900±.005	1.000	3.200	3	64	1-1571552-5
$\triangle_{3/2/10}$ OBSOLETE	TIN/TIN	.600±.005	.700	2.400	3	48	1-1571552-4
$\triangle_{3/2/10}$ OBSOLETE	TIN/TIN	.600±.005	.700	2.100	3	42	1-1571552-3
$\triangle_{3/2}$	TIN/TIN	.600±.005	.700	2.000	3	40	1-1571552-2
$\triangle_{3/2/10}$ OBSOLETE	TIN/TIN	.600±.005	.700	1.800	3	36	1-1571552-1
$\triangle_{3/2}$	TIN/TIN	.600±.005	.700	1.600	3	32	1-1571552-0
$\triangle_{3/2}$	TIN/TIN	.600±.005	.700	1.400	2	28	1571552-9
$\triangle_{3/2}$	TIN/TIN	.600±.005	.700	1.200	2	24	1571552-8
$\triangle_{3/2/10}$ OBSOLETE	TIN/TIN	.400±.005	.500	1.100	2	22	1571552-7
$\triangle_{3/2}$	TIN/TIN	.300±.005	.400	1.000	2	20	1571552-6
$\triangle_{3/2}$	TIN/TIN	.300±.005	.400	.900	2	18	1571552-5
$\triangle_{3/2}$	TIN/TIN	.300±.005	.400	.800	2	16	1571552-4
$\triangle_{3/2}$	TIN/TIN	.300±.005	.400	.700	2	14	1571552-3
$\triangle_{3/2}$	TIN/TIN	.300±.005	.400	.400	1	8	1571552-2

THIS DRAWING IS A CONTROLLED DOCUMENT. DWN: BSV 27JUL04

TE Connectivity

NAME: K. WRIGHT

PRODUCT SPEC: OPEN FRAME DIP, ECONOMY (STAMPED CONTACT) (REF AUGAT 800 SERIES)

APPLICATION SPEC: ---

SIZE: A1

DWG NO: 00779

DRAWING NO: 1571552

RESTRICTED TO: ---

CUSTOMER DRAWING

SCALE: 1:1

SHEET: 2 OF 2

REV: E4