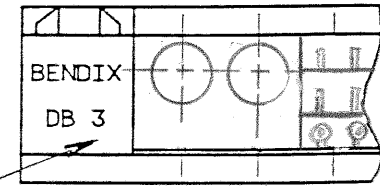


4

3

2

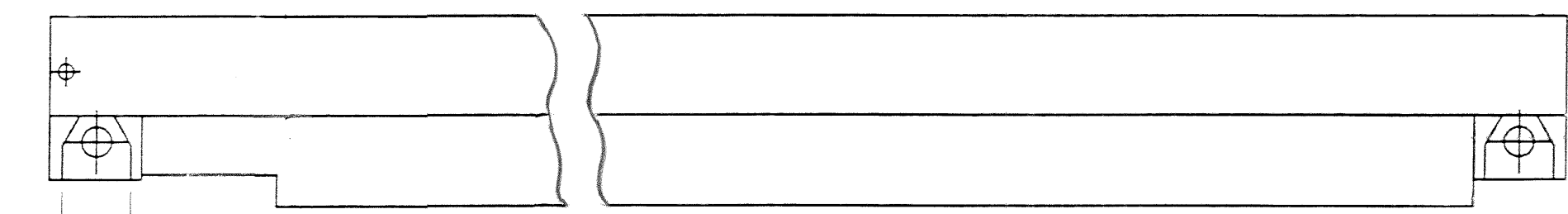
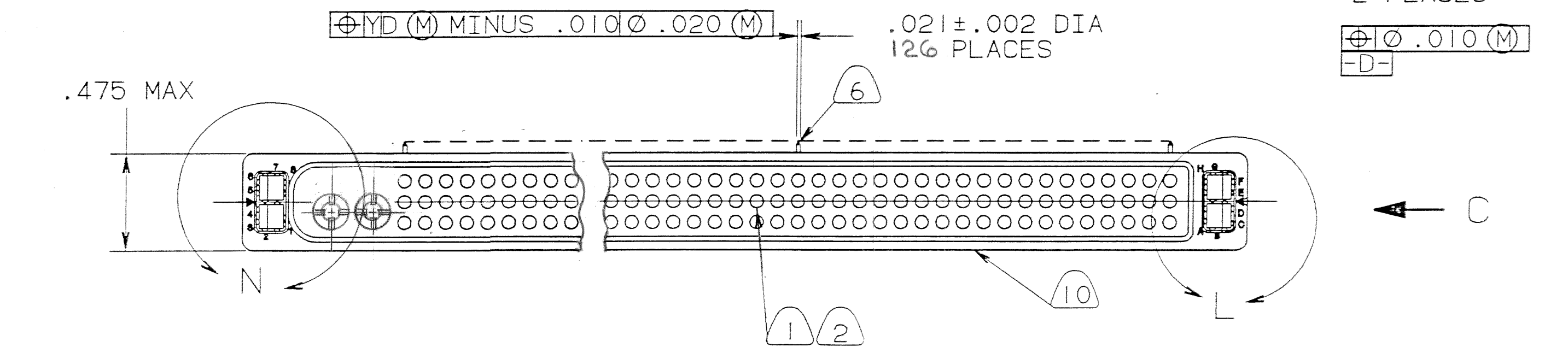
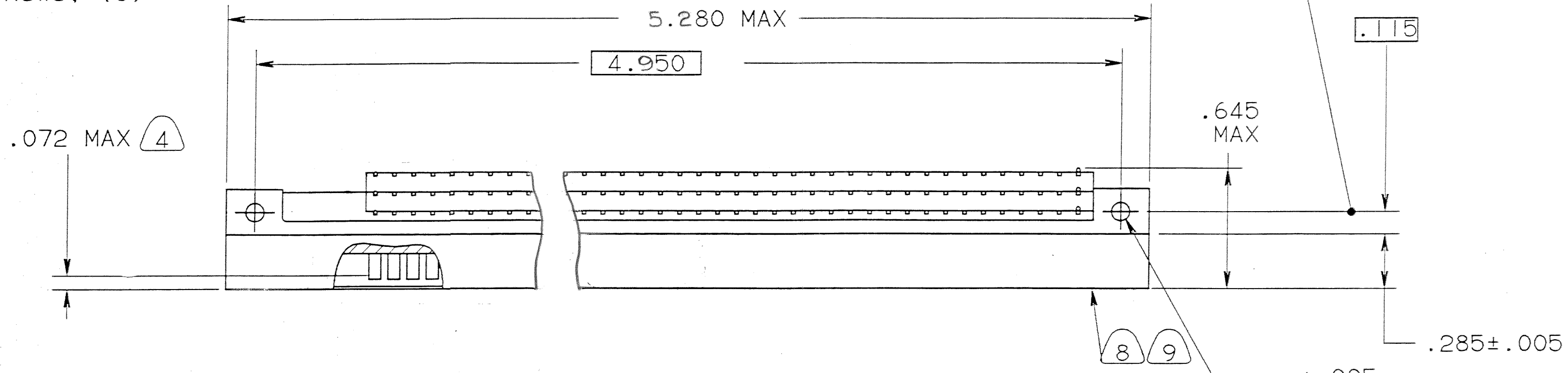
1



NUMBER OF BRUSH CONTACT ROWS, (3)

CL OF $.096^{+.005}_{-.000}$ DIA HOLES & INSIDE ROW OF CONTACTS

REVISIONS				
ZONE	LTR	DESCRIPTION	DATE	APPROVED
	A	INITIAL RELEASE NUM: 70093-318		
	B	(CL II) WAS: $.120 \pm .020$; CHG'D ITEMS 2,3,4 ECN: 28493	10-18-94 PDN	<i>P. Niles</i>



.220 X .075 DEEP
2 PLACES
(FOR HEX NUT .187 MAX FLATS & .205 MIN ACROSS CORNERS)

COMPANY ID: 3
CODED/MS/CUST: N
INTERNAL: Y
LOTNO: N
DATE CODE: 9-3895
SEE PRINT: Y

UNLESS OTHERWISE SPECIFIED
LINEAR DIMENSIONS ARE IN INCHES.
TOLERANCES: .XXX ± .010,
.XX ± .03, .X ± .1,
ANGLES ± 2°.
OTHER STANDARDS PER 9-3800
AND DOD-D-1000.
NOTE REF. = **XX**

FIND NO.	QTY REQD.	FSCM NO.	PART NUMBER	DESCRIPTION	NOTE REF.
4	42		10-502490-316	BRUSH CONTACT	
3	42		10-502490-216	BRUSH CONTACT	
2	42		10-502490-116	BRUSH CONTACT	
1	1		10-502535-37	CONNECTOR, MOLDED	

PARTS LIST					
SPECIFICATIONS	SIGNATURES	DATES	AMPHENOL CORPORATION BENDIX CONNECTOR OPERATIONS SIDNEY, N.Y.		
MATERIAL SPEC. N/A	PREPARED <i>P. Niles</i> CHECKED <i>R. Downing</i> MATERIAL <i>R. Downing</i> APPROVED	6/1/93 6/1/93	CONNECTOR, ELECT., DB-P SPECIAL 126 BRUSH CONTACTS INSTALLED 2 SIZE 16 COAXIAL CONTACT POSITIONS		
PROCESS SPEC. SEE NOTE 10 9-3895, 9-7855	APPROVED <i>R. Downing</i> 1ST PART NO 110-503150-060	6/1/93	SIZE C 77820	FSCM NO. 10-503150-60	REV. B
			SCALE N/A	REF N/A	SHEET 1 OF 2

SEE SHEET 2
NOTES:

THE USE OF THIS DOCUMENT IS UNLIMITED.
HOWEVER, DOCUMENTS REFERENCED HEREON
MAY CONTAIN LIMITED RIGHTS DATA.

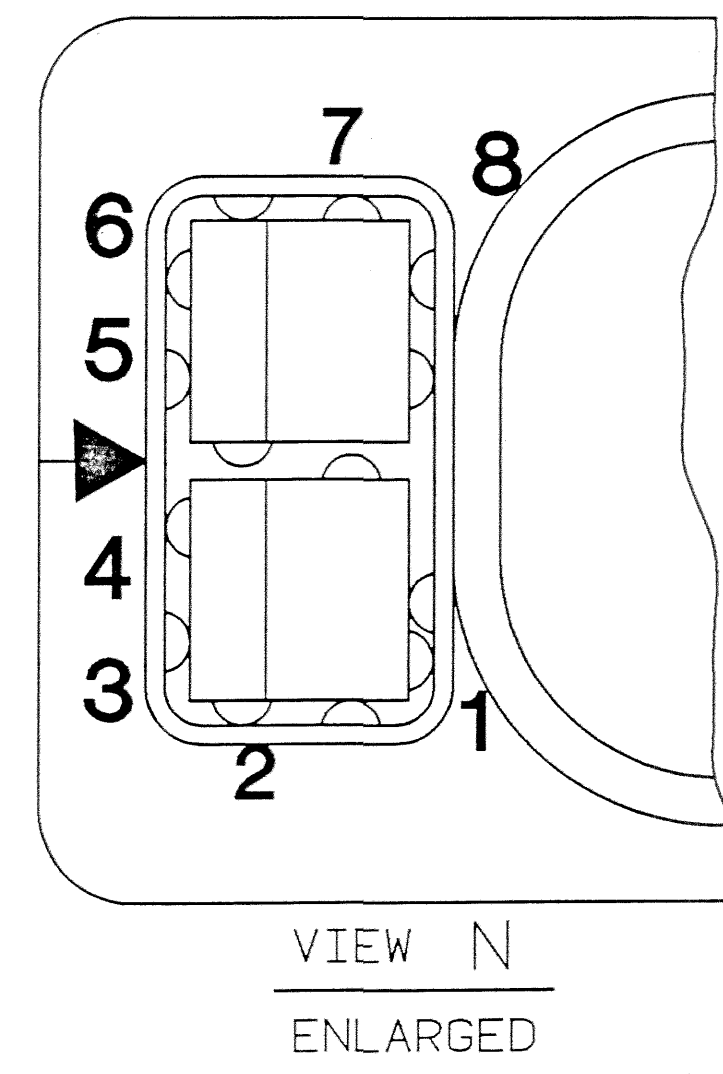
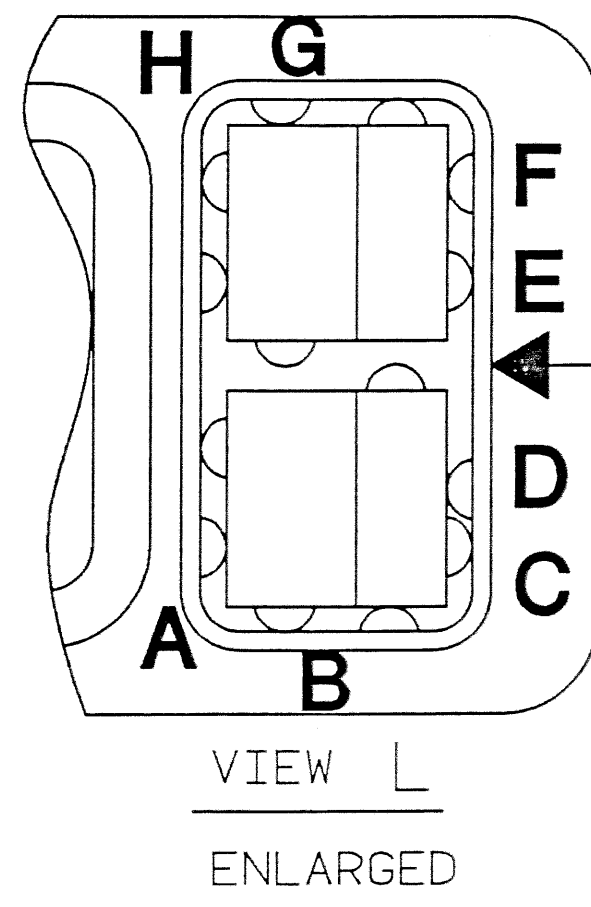
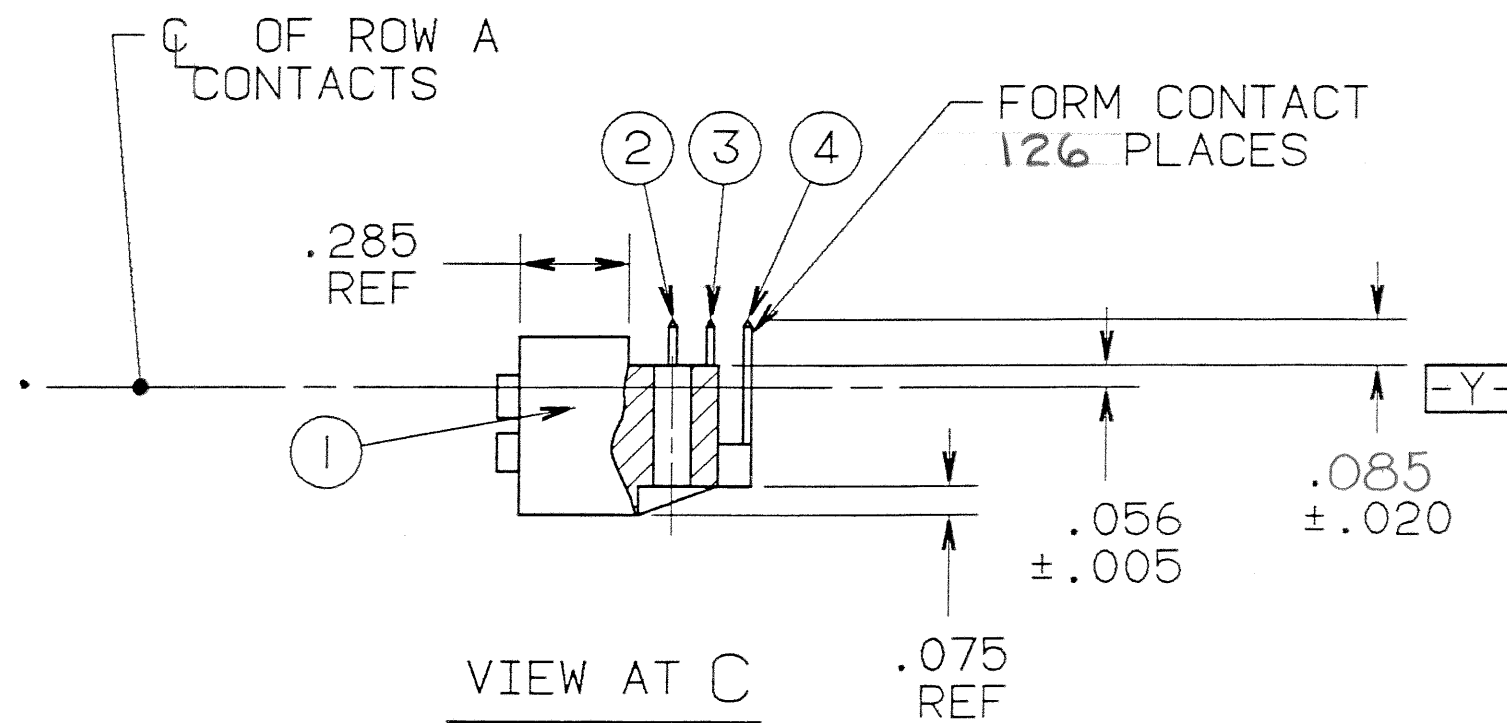
N/A
N/A
NEXT ASSEMBLY

10-503150-60

A

B

D



- 12. CONNECTOR HOUSING MATERIAL CONFORMS TO THE REQUIREMENTS OF MIL-C-55302/170.
- 11. INDICATED CONTACT POSITIONS ACCEPT 21-33122-563 CONTACTS AND OTHERS.
- 10. PERMANENTLY MARK ON INDICATED SURFACE "BENDIX 77820 10-503150-60", PER 9-7855, AND DATE CODE PER 9-3895, COLOR WHITE. CHARACTERS SHALL BE .062±.020 HIGH.
- 9. USER INSTALLATION INFORMATION: USER SHALL EMPLOY AN INSTALLATION PROCEDURE THAT PROVIDES A MATING FACE STRAIGHTNESS WITHIN .010 TO INSURE MAXIMUM CONNECTOR PERFORMANCE. FOR TYPICAL INSTALLATION INFORMATION REQUEST BENDIX SERVICE INSTRUCTIONS L-1220.
- 8. BENDIX INSPECTION REQUIREMENT ONLY. MATING SURFACE SHALL BE NET CONVEX .020 INCH MAX. PERFECT FORM AT MMC NOT REQUIRED. REQUIREMENT IS NOT APPLICABLE TO CUSTOMER RECEIVING INSPECTION.
- 7. BRUSH CONTACTS ARE REPLACEABLE FROM FRONT. SIZE 16 CONTACT POSITIONS PROVIDE REAR RELEASE AND REAR REMOVAL.
- 6. BRUSH CONTACT MATERIALS & FINISHES CONFORM TO THE REQUIREMENTS OF MIL-C-55302/170.
- 5. FOR MATING MOTHER BOARD CONNECTOR, SEE DRAWING 10-503220-73.
- 4. INDICATED DIMENSION IS TO POINT OF ELECTRICAL ENGAGEMENT OF BRUSH CONTACTS.
- 3. INDICATED ITEM IS NOT PART OF STANDARD ASSEMBLY AND MUST BE PURCHASED SEPARATELY. FOR PART NUMBER AND QUANTITIES, SEE ACCESSORIES BLOCK.
- 2. BRUSH CONTACT LOCATIONS ARE IDENTIFIED ON THE FRONT FACE PER CONTACT ARRANGEMENT DRAWING.
- 1. FOR CONTACT ARRANGEMENT DATA, SEE DRAWING L-32404-11.

NOTES:

THE USE OF THIS DOCUMENT IS UNLIMITED. HOWEVER, DOCUMENTS REFERENCED HEREON MAY CONTAIN LIMITED RIGHTS DATA.

SIZE 16 CONTACT REMOVAL TOOL	10-538988-16		7
TEST PROBE KIT	11-10400-22		
POLARIZATION SQUARE	10-285422-2	4	3
DESCRIPTION	PART NUMBER	QTY	NOTE REF
ACCESSORIES (NOT PART OF STANDARD ASSEMBLY)			3
SIZE C	FSCM NO. 77820	10-503150-60	
SCALE NONE	WT.	REF N/A	SHEET 2

D

C

10-503150-60

B

A