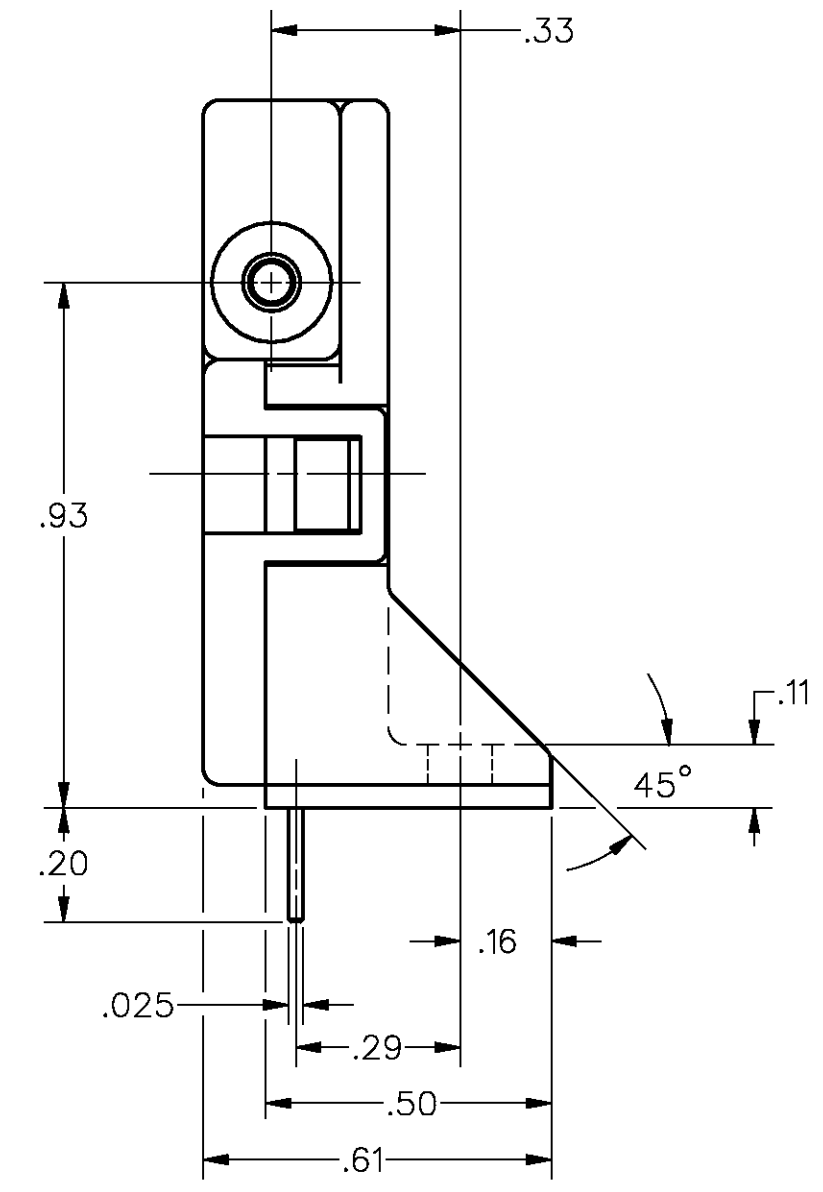
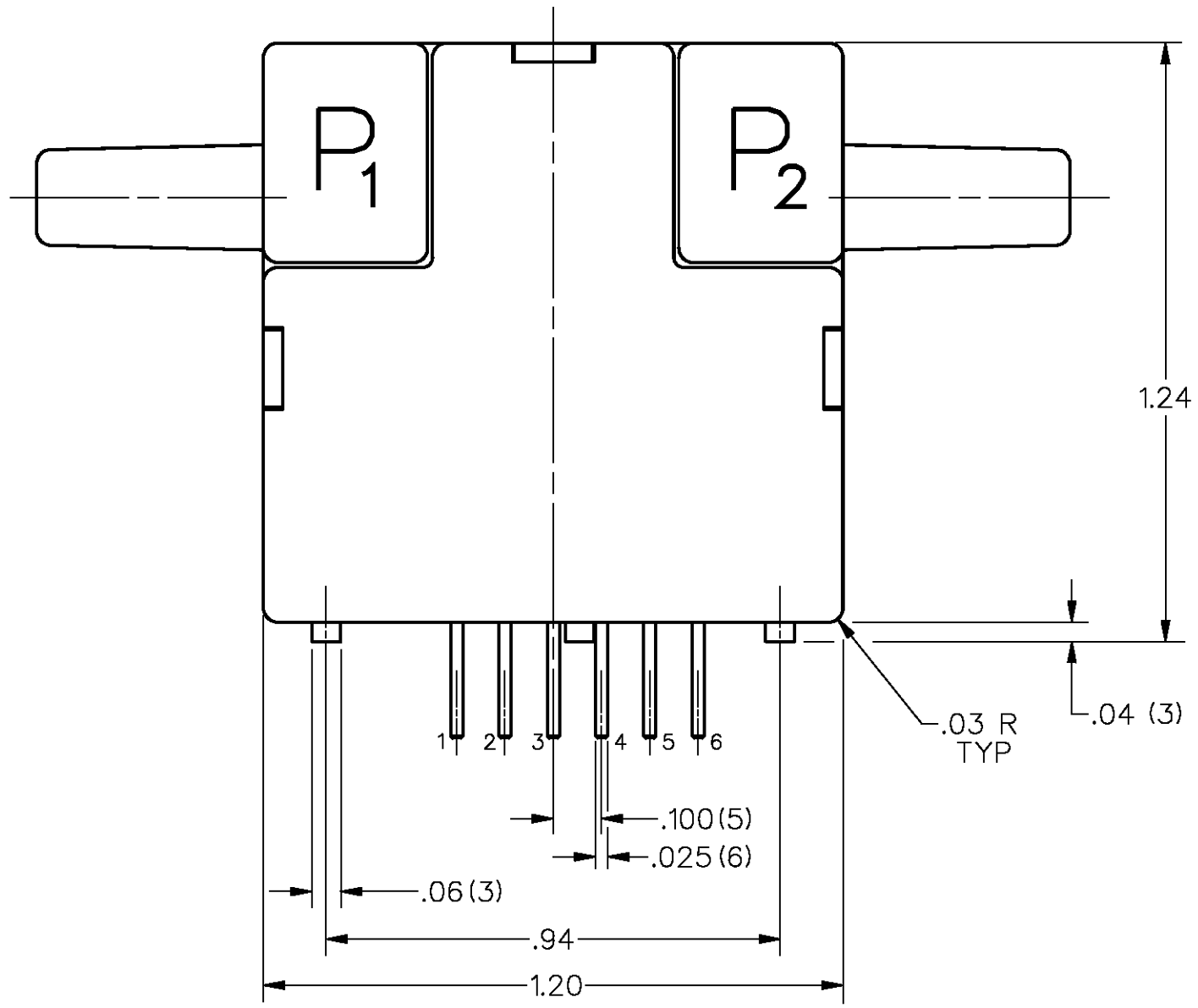
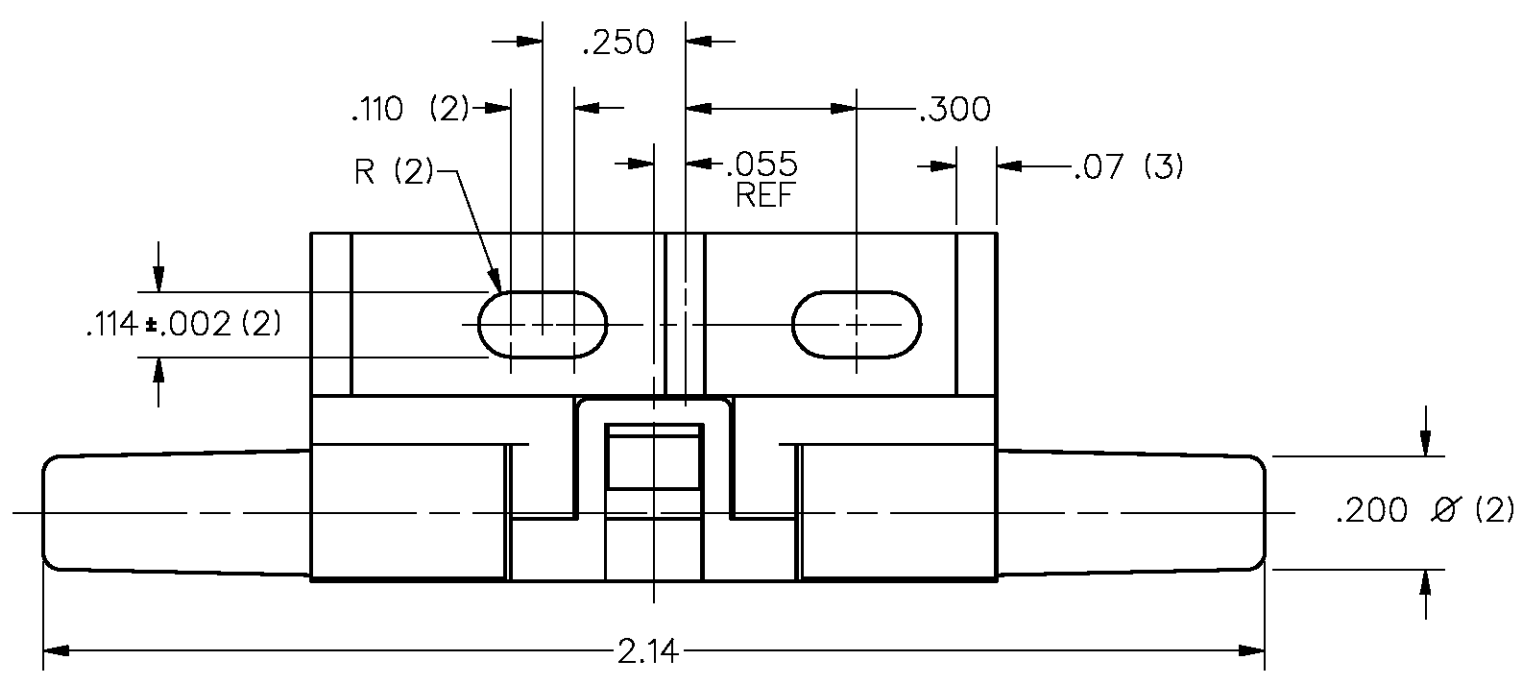


AWM2300V
OUTPUT FLOW VS. INTERCHANGEABILITY

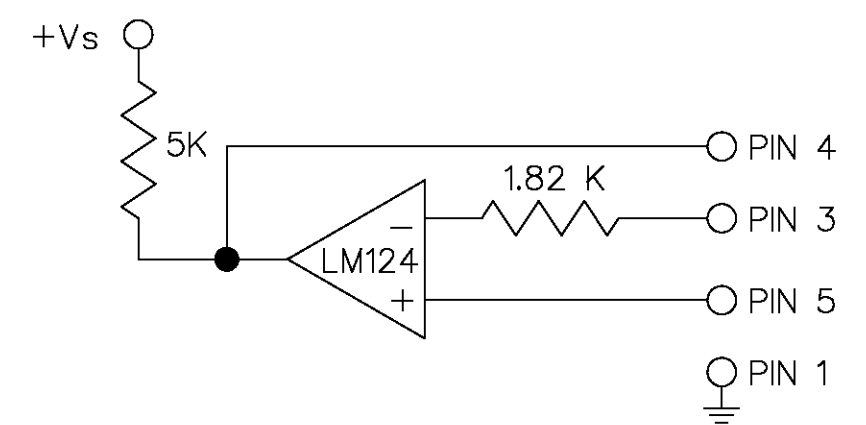
| FLOW sccm | NOMINAL (mV) | TOL. (%mV) |
|--------------|-----------------|---------------|
| 1000 | 55.50 | 3.70 |
| 800 | 52.90 | 3.5 |
| 650 | 50.00 | 2.50 |
| 400 | 40.50 | 3.00 |
| 200 | 29.20 | 3.20 |
| 0 | 0.00 | 1.0 |
| -200 | -28.90 | 15.00 |
| -400 | -41.20 | 26.00 |
| -600 | -48.20 | 29.50 |
| -800 | -52.50 | 32.50 |
| -1000 | -55.00 | 36.00 |

| SPECIFICATIONS: | AWM2300V |
|--|------------------------------------|
| RECOMMENDED EXCITATION (USING TEST CIRCUIT) 8VDC MIN | 10.00±.01VDC (15.00 VDC MAX) |
| POWER CONSUMPTION | 30mW TYP |
| OUTPUT VOLTAGE TRIM POINT | 50mV @ 650 sccm |
| NULL VOLTAGE | 0.0±1.0mV |
| NULL VOLTAGE SHIFT (-25°C TO +85°C) | ±.14mV TYP |
| OUTPUT VOLTAGE SHIFT (+25°C TO -25°C) (+25°C TO +85°C) | +5% READING MAX -5% READING MAX |
| REPEATABILITY & HYSTERESIS | ±1.0% READING MAX |
| RESPONSE TIME | 3.0 msec MAX |
| OPERATING TEMPERATURE RANGE | -25°C TO +85°C |
| STORAGE TEMPERATURE RANGE | -40°C TO +90°C |
| TERMINATION (ON .100 CENTERS) | 0.025 SQ. IN. |
| WEIGHT | 10.8 GRAMS |
| SHOCK RATING (5 DROPS, EACH OF 6 AXES) | 100G PEAK |
| OVERPRESSURE | 25 psi MAX |
| SENSOR RESISTANCE (PIN 2-PIN 1, PIN 6-PIN 1) | 5 K-OHMS (TYP) |
| SENSOR CURRENT (PIN 2-PIN 1, PIN 6-PIN 1) | 0.6 mA (MAX) |

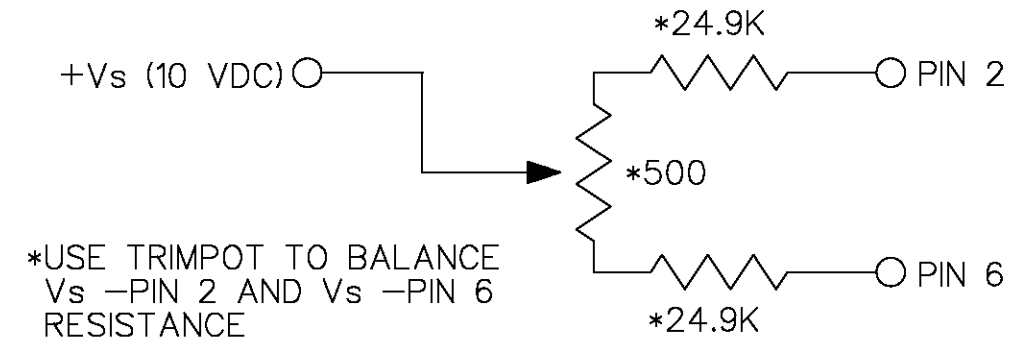
NOTES
 1 - POSITIVE FLOW DIRECTION IS DEFINED AS PROCEEDING FROM P1 TO P2 AND RESULTS IN POSITIVE OUTPUT (PIN 6 > PIN 2). NEGATIVE FLOW DIRECTION IS DEFINED CONVERSELY AND RESULTS IN NEGATIVE OUTPUT (PIN 6 < PIN 2)
 2 - LASER TRIMMED FOR 50.00mV AT 650 Sccm



HEATER CONTROL CIRCUIT



SENSING BRIDGE SUPPLY CIRCUIT



DRAWING NUMBER: AWM2300V
 ISSUE: 7
 REVISIONS:
 A PR17967
 B CO74438
 C CO83279
 D CO83694
 E CO94375
 F 201386
 G 22 SEP 00
 J A S 12 OCT 88
 J A S 11 JAN 90
 X87416-AW
 REPLACES: PR-17967
 CHECK: J A S 11 JAN 90
 RASTER DRAWN

MASTER REDUCED

| | | |
|---|---|--|
| THIS DRAWING COVERS A PROPRIETARY ITEM AND IS THE PROPERTY OF MICRO SWITCH, A DIVISION OF HONEYWELL. THIS DRAWING IS NOT TO BE COPIED OR USED WITHOUT THE APPROVAL OF MICRO SWITCH. | | CATALOG LISTING AWM2300V |
| MICRO SWITCH a Honeywell Division FED. REG. CODE 91929 | MASS AIRFLOW SENSOR (1000 Sccm) | THIRD ANGLE PROJECTION SCALE 3 : 1 DO NOT SCALE PRINT UNLESS OTHERWISE SPECIFIED TOLERANCES ARE: ONE PLACE (.0) ±.030 TWO PLACES (.00) ±.015 THREE PLACES (.000) ±.005 ANGLES ± WEIGHT |