

THIS DOCUMENT CONTAINS PROPRIETARY DATA OF POLARIS INDUSTRIAL ENTERPRISES, INC. NO DISCLOSURE, REPRODUCTION, OR USE OF ANY PART THERE OF MAY BE MADE EXCEPT BY WRITTEN PERMISSION.

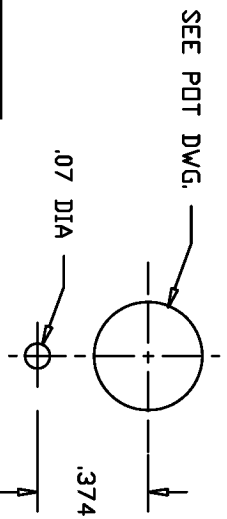
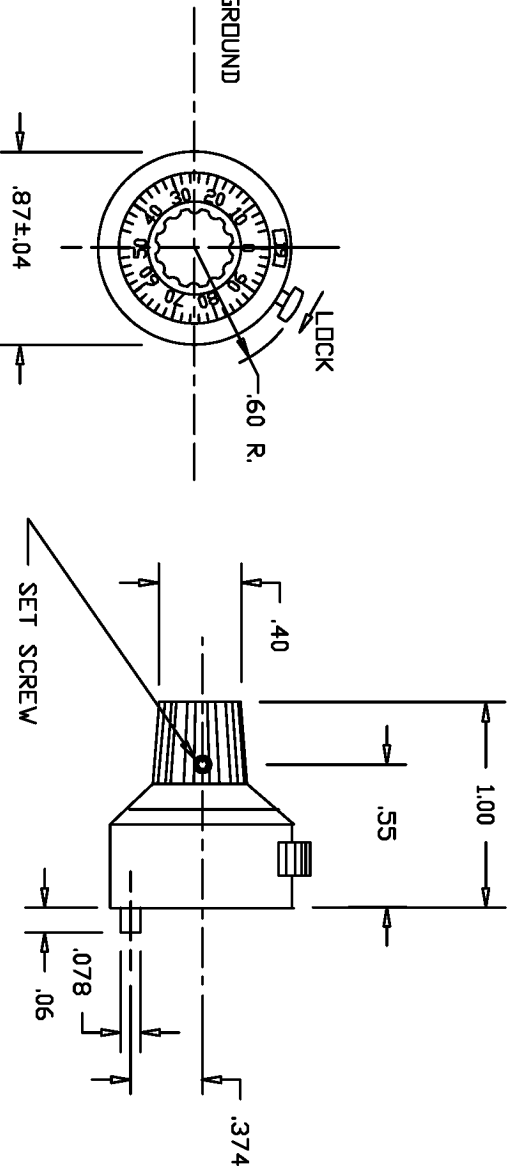
|      |     |         |         |                        |
|------|-----|---------|---------|------------------------|
| REV. | BY  | DATE    | APPRVL. | P/N                    |
| E    | DMS | 7/24/98 | BT      | MG22                   |
|      |     |         |         | ADDED 'L' & 'N' SPECS. |

**SPECIFICATIONS**

TURNS COUNTED ----- 20  
 DIAMETER ----- 7/8 INCH  
 EXTENSION FROM PANEL ----- 1.0 INCHES  
 PANEL THICKNESS(MAX) ----- 1/4 INCH  
 WEIGHT ----- .2 OZ  
 HOUSING MATERIAL ----- ALUMINUM  
 FINISH(HOUSING) ----- SEE CHART  
 KNOB MATERIAL ----- BLACK NYLON  
 NUMBERS ----- WHITE ON BLACK BACKGROUND

**FEATURES**

COUNTS 20 TURNS.  
 ONE PIECE MOUNTING  
 LARGE,EASY TO READ NUMBERS  
 SMOOTH ADJUSTMENT  
 OVER CENTER LOCK  
 ATTRACTIVE APPEARANCE  
 LOW COST



SEE PGT DWG.  
MOUNTING HOLE LAYOUT

| MODEL      | MATCHING SHAFT SIZE | COLOR | LOCK | MODEL      | MATCHING SHAFT SIZE | COLOR | LOCK |
|------------|---------------------|-------|------|------------|---------------------|-------|------|
| MG22N-1/8  | 1/8                 | SATIN |      | MG22L-1/8  | 1/8                 | SATIN |      |
| MG22N-1/4  | 1/4                 | SATIN | NO   | MG22L-1/4  | 1/4                 | SATIN | YES  |
| MG22N-6MM  | 6MM                 | SATIN |      | MG22L-6MM  | 6MM                 | SATIN |      |
| MG22N-3/32 | 3/32                | SATIN |      | MG22L-3/32 | 3/32                | SATIN |      |
| MG22N-1/8  | 1/8                 | BLACK |      | MG22L-1/8  | 1/8                 | BLACK |      |
| MG22N-1/4  | 1/4                 | BLACK | NO   | MG22L-1/4  | 1/4                 | BLACK | YES  |
| MG22N-6MM  | 6MM                 | BLACK |      | MG22L-6MM  | 6MM                 | BLACK |      |
| MG22N-3/32 | 3/32                | BLACK |      | MG22L-3/32 | 3/32                | BLACK |      |
| MG22N-1/8  | 1/8                 | GRAY  |      | MG22L-1/8  | 1/8                 | GRAY  |      |
| MG22N-1/4  | 1/4                 | GRAY  | NO   | MG22L-1/4  | 1/4                 | GRAY  | YES  |
| MG22N-6MM  | 6MM                 | GRAY  |      | MG22L-6MM  | 6MM                 | GRAY  |      |
| MG22N-3/32 | 3/32                | GRAY  |      | MG22L-3/32 | 3/32                | GRAY  |      |

|   |  |  |  |                              |                  |
|---|--|--|--|------------------------------|------------------|
| TOLERANCES<br>XX = +/- .010" FRACT. = +/- 1/64"<br>XXX = +/- .005" ANGLES = +/- 1/2"<br>ALL SPECIFICATIONS SUBJECT TO CHANGE WITHOUT NOTICE |  | SCALE<br>NONE<br>DATE: 1-20-86<br>BY: _____<br>APPR'D: _____<br>BT |  | TITLE<br>TURNS COUNTING DIAL | PART NO.<br>MG22 |
|---|--|--|--|------------------------------|------------------|