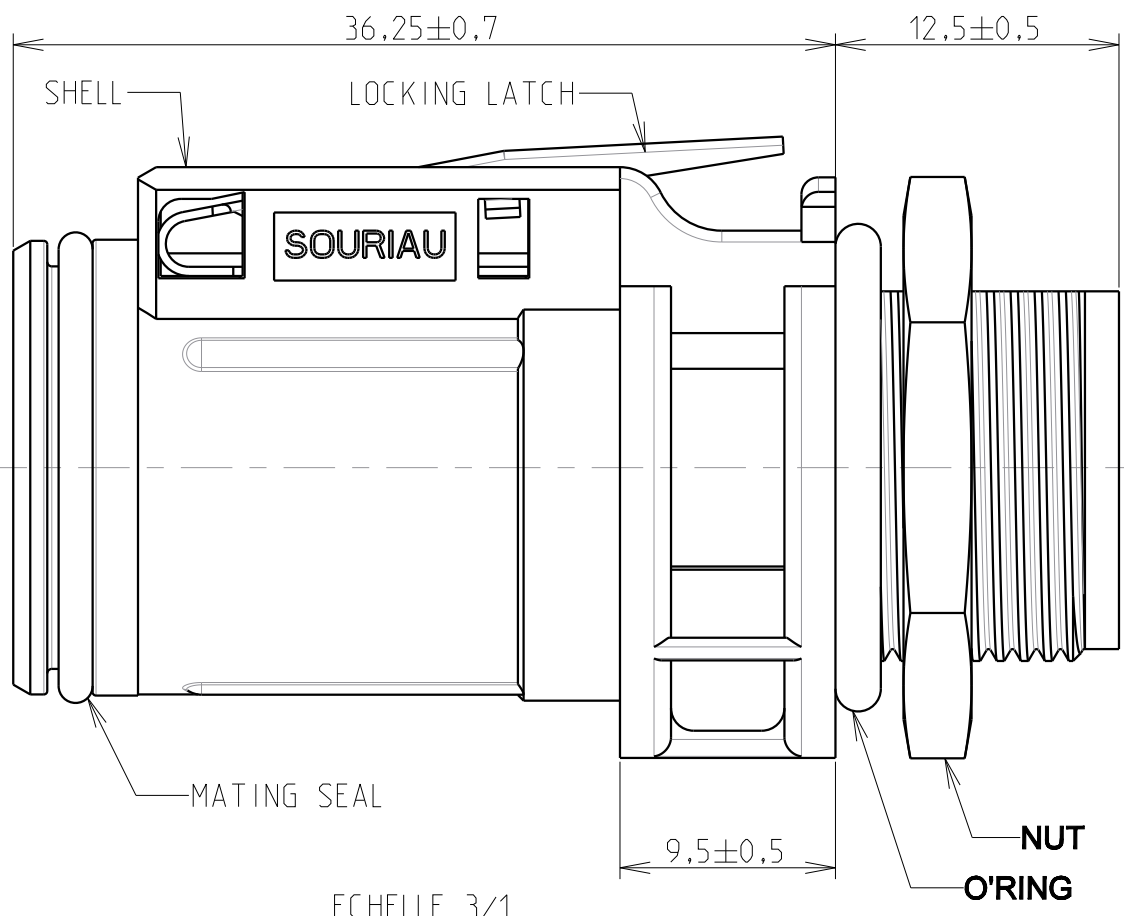
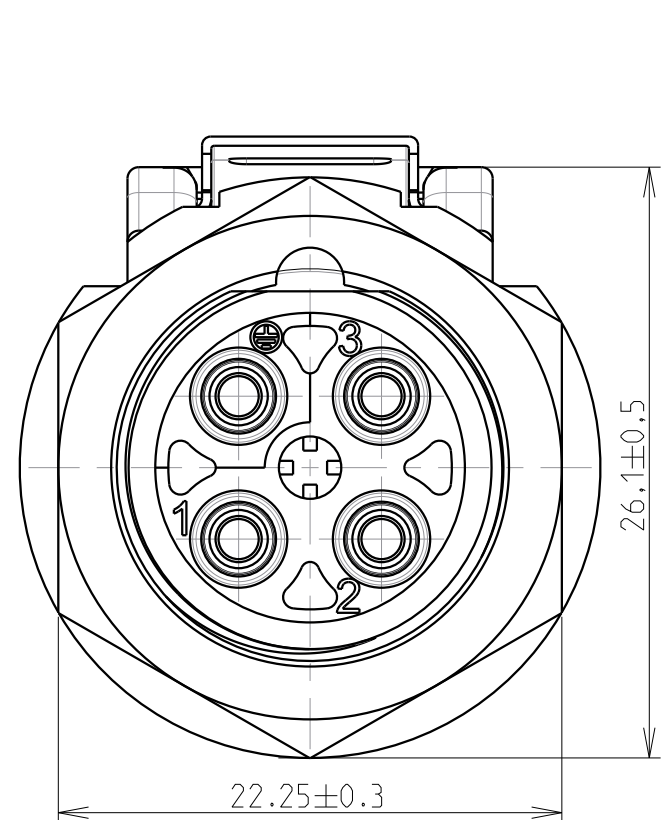
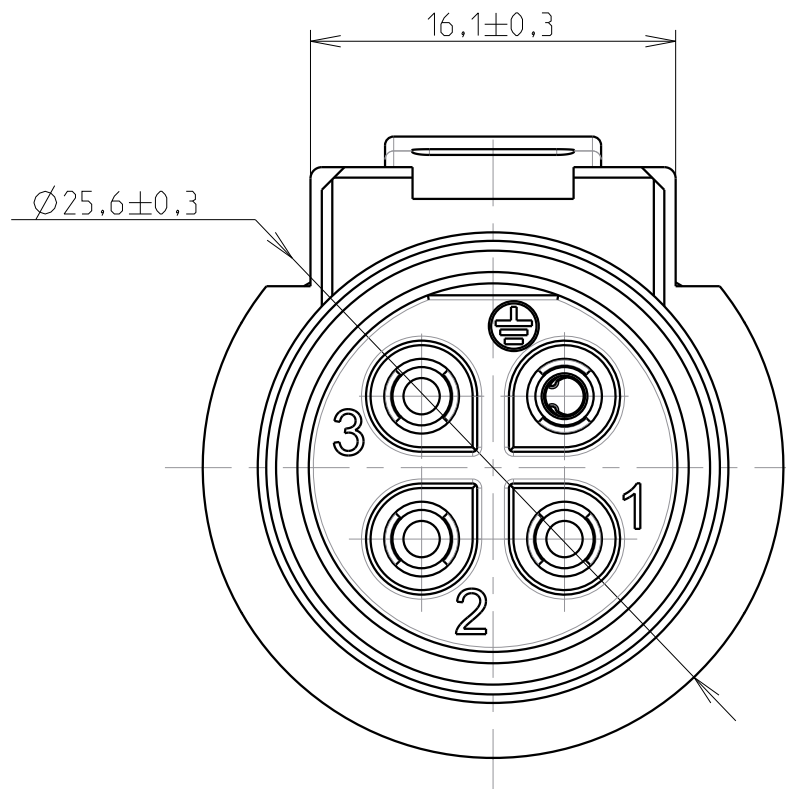


WIRING FACE



MATING FACE



NOTES

MATERIALS
SHELL
O'RING
NUT
MATING SEAL
LOCKING LATCH

BLACK POLYAMID
NBR
BLACK ANODIZED ALUMINIUM ALLOY
SILICON
STAINLESS STEEL

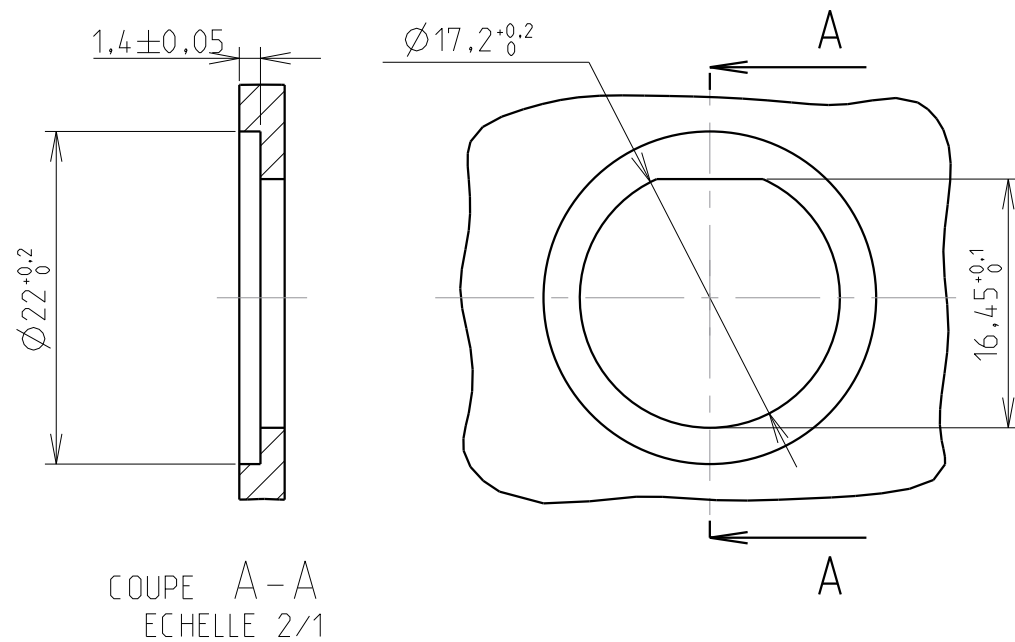
PERFORMANCES CHARACTERISTICS

| | | |
|---------------------------------|-----------------|---|
| MECHANICAL | | |
| TEMPERATURE CLASS | IEC61984/UL1977 | -40°C TO 105°C |
| DURABILITY | IEC61984 | 500 MATE / UNMATE CYCLES |
| SEALING IN MATED CONDITIONS | IEC60529 | IP68 1BAR DURING 1WEEK |
| | DIN40050 | IP69K |
| SEALING IN UNMATED CONDITIONS | IEC60529 | IP67 WITH CAPS |
| OPEN FACE SEALING | IEC60529 | IP67 WITH R*M25° CONTACTS |
| POLLUTION DEGREE | IEC61984 | 4 |
| CORROSION SALT SPRAY | | MIN 1000H |
| FLAMMABILITY | UL94 | MATERIAL RATING: 5VA |
| OUTDOOR SUITABILITY (UV RESIST) | UL746C | MATERIAL RATING: (f1) |
| SCOOP PROOF | | |
| ELECTRICAL | | |
| TOUCH PROOF | IEC60529 | IP2X |
| NOMINAL CURRENT | UL1977 | 16A WITH AWG14 WIRE / 13A WITH AWG16 WIRE |
| | | 16A WITH 2.5MM² WIRE / 13A WITH 1.5MM² WIRE AT 60°C |
| NOMINAL VOLTAGE | IEC61984 | 600V |
| NOMINAL VOLTAGE | IEC61984 | 250VAC 4KV 4 FOR CLASS II |
| | | 500VAC 6KV 4 FOR CLASS I |
| CONNECTOR BREAKING CAPACITY | UL1977 | 277V 13A WITH AWG14/16 WIRES |
| | IEC61984 | 250VAC 13A 4KV 4 |

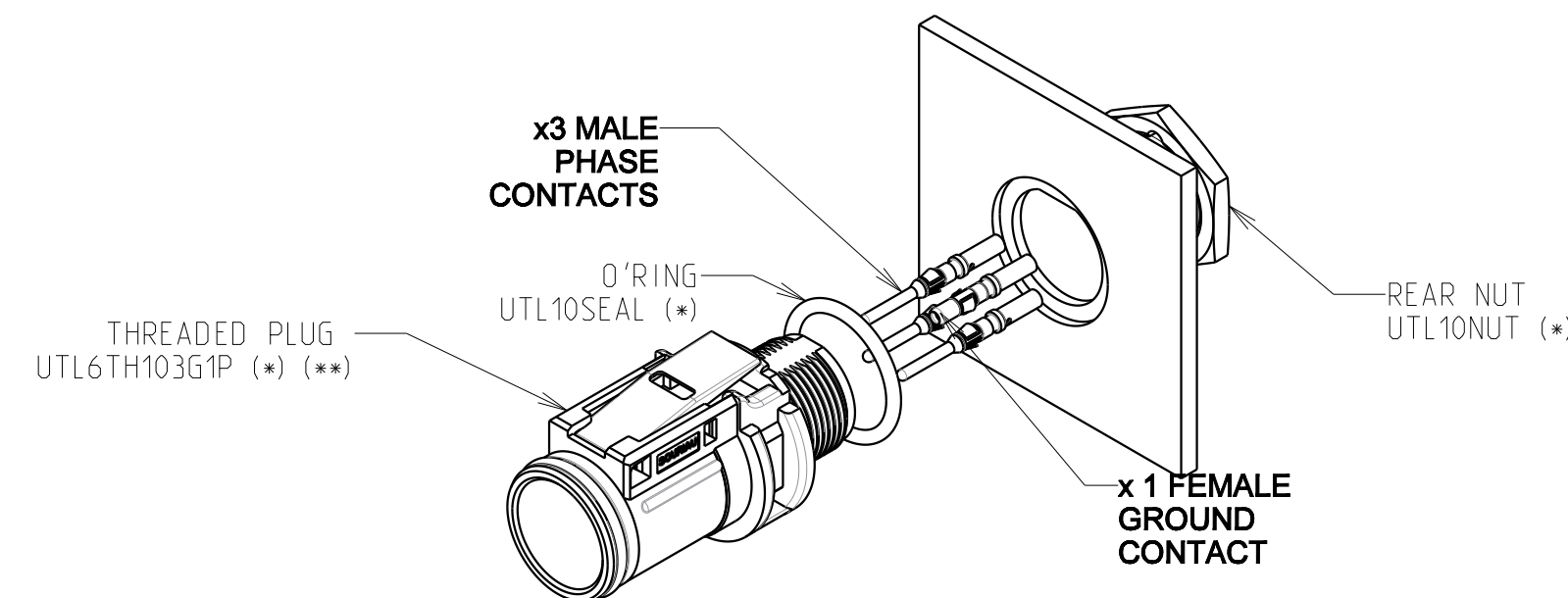
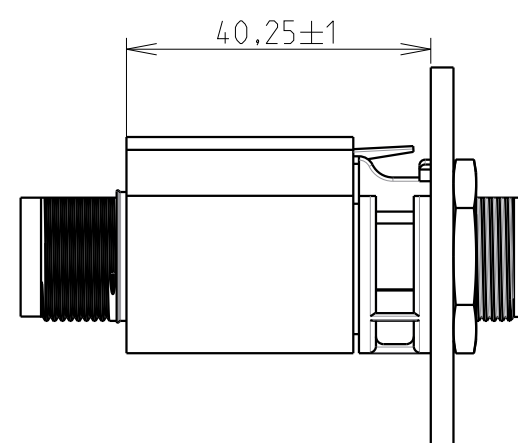
ROHS COMPLIANT

1. COUNTERPART REFERENCE UTL RECEPTACLE OR FREE HANGING
2. CONNECTORS ARE DELIVERED AS PRE-ASSEMBLED KIT
3. CONNECTOR BLOCKS ACCEPTS TRIM TRIO CONTACTS #16, R*M° OR S*M° TYPES
4. CONTACTS TO BE ORDERED SEPARATELY.
5. WARNING:PHASE CONTACTS ARE MALE VERSION AND GROUND CONTACT IS FEMALE VERSION
6. UNIT IN MM
7. MAX WIRE INSULATOR DIAMETER : Ø3.7mm
8. (*) : OPTIONAL ORDERING PART NUMBERS TO BE ORDERED SEPARATELY
9. (**) FOR x100 pcs BULK PACKAGING ADD SUFFIX B -> UTL6TH103G1PB

PANEL CUT OUT



VIEW IN MOUNTED AND MATED CONDITIONS



| Country | Jurisdiction & Control List |
|---------|-----------------------------|
| FR | NOT LISTED |

P/N : UTL5 103G1 P

| | | | |
|--------------|--------------------|---|----------------------------|
| B | 23/02/18 | Update | -- |
| ISS | DATE | Latest modification - by: | R.M. |
| Designed by: | R.M. | Date: 04/04/17 | CUSTOMER DRAWING |
| TITLE | PANEL PLUG SIZE 10 | | |
| | UTL CONNECTOR | | |
| Scale | 1/1 | General Linear Tolerances: ± 0.2 | NPRDS / PROJECT IC 155105C |
| SOURIAU | WWW.SOURIAU.COM | This document is the property of SOURIAU. It must not be reproduced or communicated without permission. | |
| FORMAT | A2 | SOURIAU DRG N° UTL1-0087A-C | SHEET 1 / 1 |

SOURIAU shall not be liable for any non-conformity or damage due to a use of the Products which does not comply with the Specifications issued by either of the Parties or by a third party (professional recommendation, technical notice.)