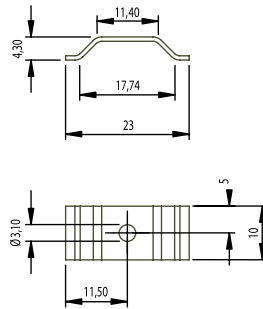


# POWERCLIP®

## Gull wing clips and multiple transistor clips

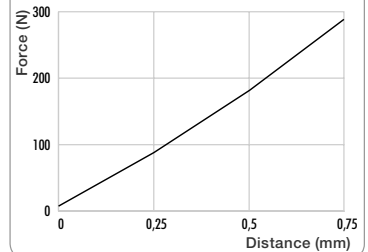


Part-No. KU 4-430

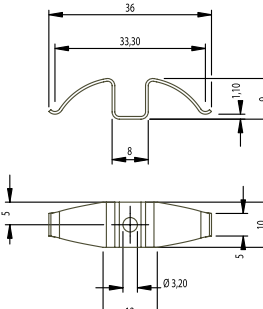


Mat. 0.8 mm

clamping force vs. distance

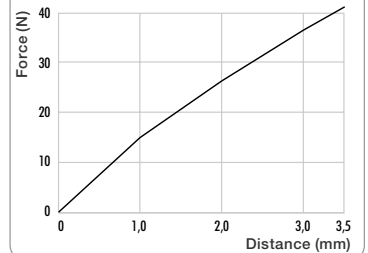


Gull Wing Clip  
Part-No. KU 4-495



Mat. 0.6 mm

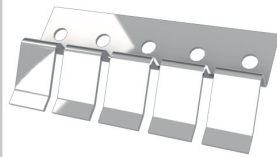
clamping force vs. distance



We disclaim all liability for the correctness of the information contained herein.

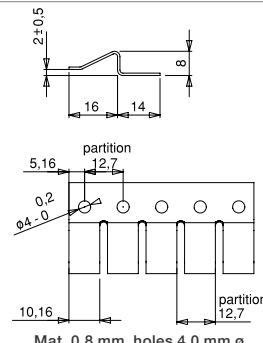
We reserve the right to make technical changes without notice.

All dimensions in mm.



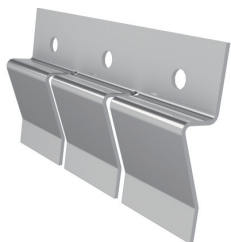
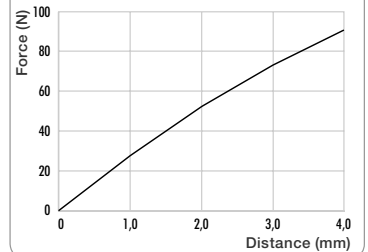
Multiple Transistor Clip  
Part-No. KU 4-498 / X  
TO-220

(X = Number of fingers)



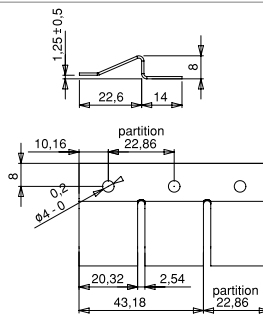
Mat. 0.8 mm, holes 4.0 mm ø

clamping force vs. distance



Multiple Transistor Clip  
Part-No. KU 4-499 / X  
TO-247 / TO-264

(X = Number of fingers)



Mat. 0.8 mm, holes 4.0 mm ø

clamping force vs. distance

