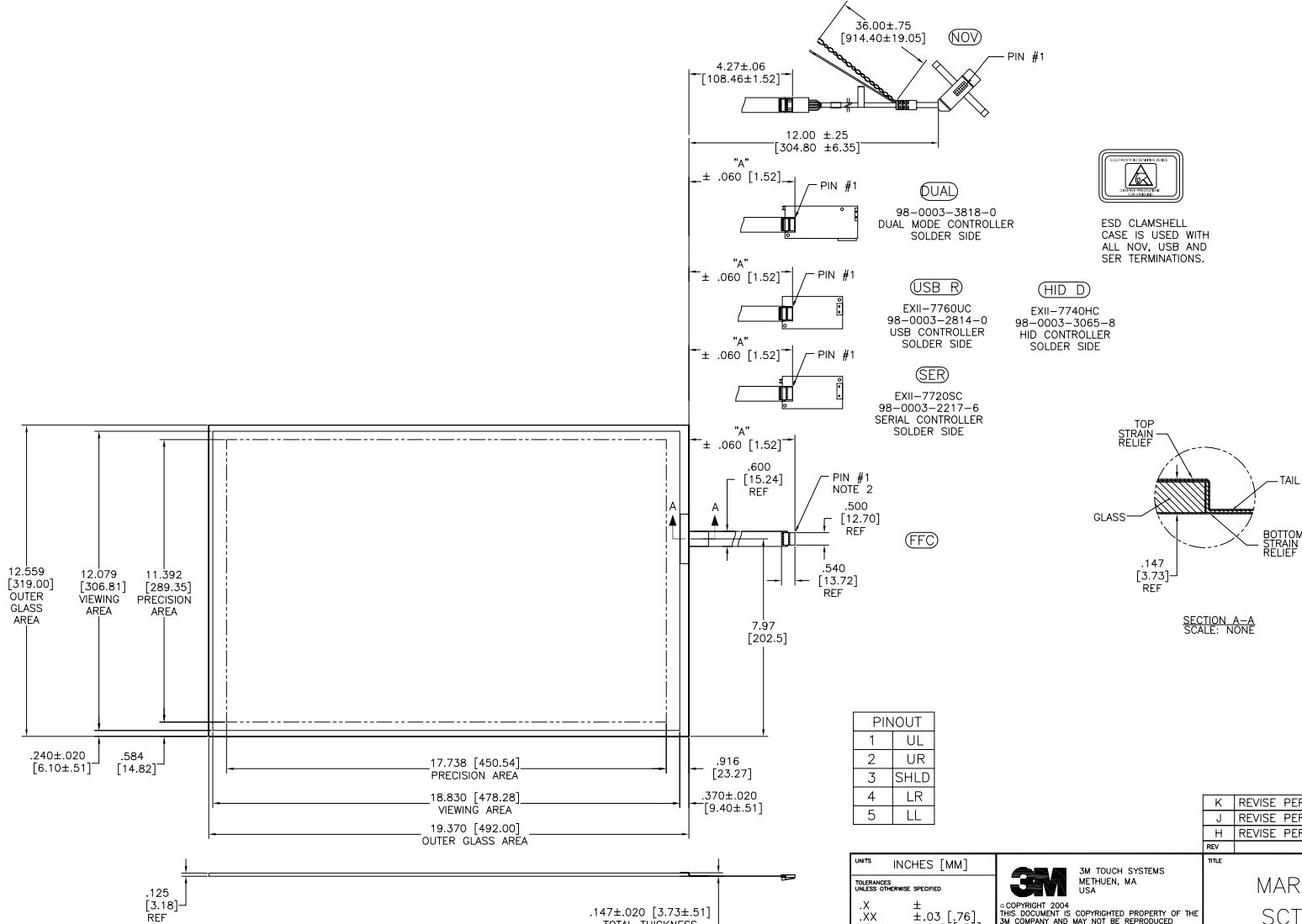
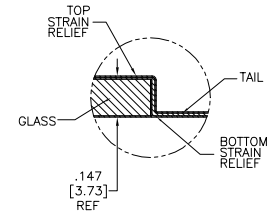


OGA DIAGONAL: 23.09 [586.4]  
 VA DIAGONAL: 22.37 [568.2]  
 PA DIAGONAL: 21.08 [535.5]

TOP LEVEL NUMBER	US NUMBER	TYPE	DIM "A" (TOTAL GLASS TO CONNECTOR)	A/G FINISH	PROD SPEC
17-9311-205	98-0003-2209-3	FFC	8.00" [203.20]	AG500	23655
17-9311-206	98-0003-2731-6	NOV	SEE DWG	AG500	23655
17-9311-227	98-0003-2734-0	SER	8.00" [203.20]	AG500	23655
17-9311-226	98-0003-3052-6	USB R	8.00" [203.20]	AG500	23655
N/A	98-0003-3652-3	HID D	8.00" [203.20]	AG500	23655
N/A	98-0003-3420-5	FFC	8.00" [203.20]	WC100	34523
N/A	98-0003-3418-9	SER	8.00" [203.20]	WC100	34523
N/A	98-0003-3419-7	USB R	8.00" [203.20]	WC100	34523
N/A	98-0003-3975-8	DUAL	8.00" [203.20]	AG500	23655



ESD CLAMSHELL CASE IS USED WITH ALL NOV, USB AND SER TERMINATIONS.



PINOUT	
1	UL
2	UR
3	SHLD
4	LR
5	LL

REV	REVISION	PER	CO	DATE	DRW
K	REVISE	PER	CO 036256	4/13	SB
J	REVISE	PER	CO 034069	1/12	SB
H	REVISE	PER	CO 033640	10/11	SB

NOTES:

- WEIGHT OF GLASS IN GRAMS: 1196±10%
- NICOMATIC HOUSING P/N: OLOS  
 NICOMATIC RECEPTACLES (PINS) MATTE TIN PLATED P/N: 14106-12  
 HOUSING ORIENTED WITH LATCH DOWN

.147±.020 [3.73±.51]  
 TOTAL THICKNESS OF GLASS, CABLE AND STRAIN RELIEF

UNITS	INCHES [MM]	 3M TOUCH SYSTEMS METHUEN, MA USA
TOLERANCES UNLESS OTHERWISE SPECIFIED	.X ± .XX ±.03 [.76] .XXX ±.015 [.38] ANGLES ±1°	
THIRD ANGLE PROJECTION		© COPYRIGHT 2004 THIS DOCUMENT IS COPYRIGHTED PROPERTY OF THE 3M COMPANY AND MAY NOT BE REPRODUCED WITHOUT 3M WRITTEN PERMISSION OR USED OR DISCLOSED FOR OTHER THAN 3M AUTHORIZED PURPOSES.
DO NOT SCALE DRAWING	SCALE 1 = 1	DRAWN AH 4/07 CAD FORMAT AUTOCAD SHEET 1 OF 1 SIZE C DOCUMENT NO. 34079-MKT REV K

TITLE	
MARKETING DRAWING SCT32NN 22.37" W	