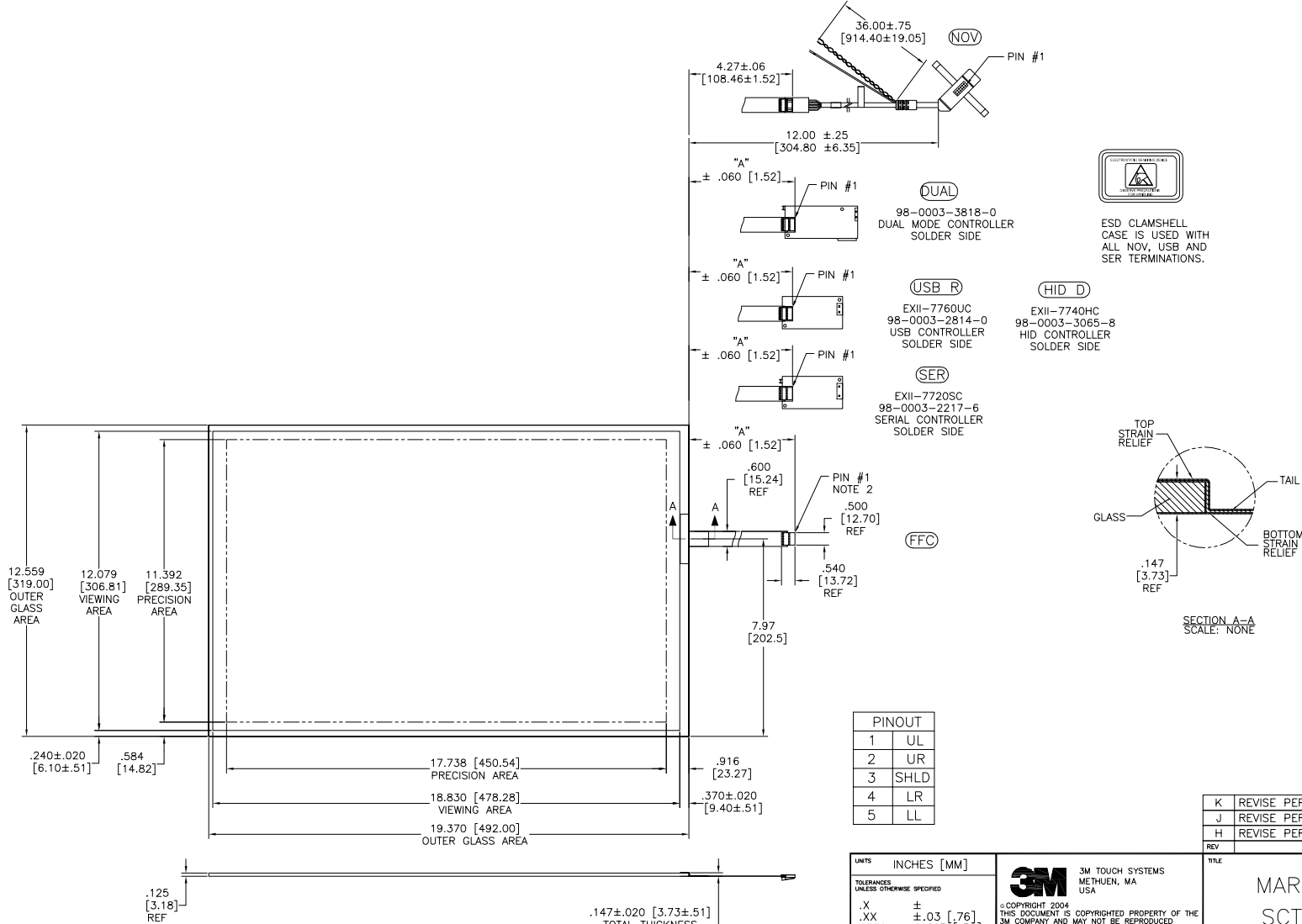
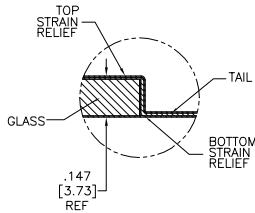


OGA DIAGONAL: 23.09 [586.4]  
 VA DIAGONAL: 22.37 [568.2]  
 PA DIAGONAL: 21.08 [535.5]

TOP LEVEL NUMBER	US NUMBER	TYPE	DIM "A" (TOTAL GLASS TO CONNECTOR)	A/G FINISH	PROD SPEC
17-9311-205	98-0003-2209-3	FFC	8.00" [203.20]	AG500	23655
17-9311-206	98-0003-2731-6	NOV	SEE DWG	AG500	23655
17-9311-227	98-0003-2734-0	SER	8.00" [203.20]	AG500	23655
17-9311-226	98-0003-3052-6	USB R	8.00" [203.20]	AG500	23655
N/A	98-0003-3652-3	HID D	8.00" [203.20]	AG500	23655
N/A	98-0003-3420-5	FFC	8.00" [203.20]	WC100	34523
N/A	98-0003-3418-9	SER	8.00" [203.20]	WC100	34523
N/A	98-0003-3419-7	USB R	8.00" [203.20]	WC100	34523
N/A	98-0003-3975-8	DUAL	8.00" [203.20]	AG500	23655



ESD CLAMSHELL CASE IS USED WITH ALL NOV, USB AND SER TERMINATIONS.



SECTION A-A  
SCALE: NONE

PINOUT	
1	UL
2	UR
3	SHLD
4	LR
5	LL

REV	REVISION	PER	CO	DATE	DRW
K	REVISE PER	CO	036256	4/13	SB
J	REVISE PER	CO	034069	1/12	SB
H	REVISE PER	CO	033640	10/11	SB

- NOTES:
- WEIGHT OF GLASS IN GRAMS: 1196±10%
  - NICOMATIC HOUSING P/N: OLOS  
 NICOMATIC RECEPTACLES (PINS) MATTE TIN PLATED P/N: 14106-12  
 HOUSING ORIENTED WITH LATCH DOWN

.147±.020 [3.73±.51]  
 TOTAL THICKNESS OF GLASS, CABLE AND STRAIN RELIEF

UNITS INCHES [MM]

TOLERANCES UNLESS OTHERWISE SPECIFIED  
 .X ±  
 .XX ±.03 [.76]  
 .XXX ±.015 [.38]  
 ANGLES ±1°

THIRD ANGLE PROJECTION

DO NOT SCALE DRAWING

SCALE 1 = 1

**3M** 3M TOUCH SYSTEMS  
 METHUEN, MA USA

© COPYRIGHT 2004  
 THIS DOCUMENT IS COPYRIGHTED PROPERTY OF THE 3M COMPANY AND MAY NOT BE REPRODUCED WITHOUT 3M WRITTEN PERMISSION OR USED OR DISCLOSED FOR OTHER THAN 3M AUTHORIZED PURPOSES.

DRAWN AH 4/07

TITLE

MARKETING DRAWING  
 SCT32NN 22.37" W

CAD FORMAT AUTOCAD SHEET 1 OF 1

SIZE C DOCUMENT NO. 34079-MKT REV K