

## ANGIE-M

~20° medium beam

### TECHNICAL SPECIFICATIONS:

Dimensions	Ø 34.0 mm
Height	10.7 mm
Fastening	glue, pin
ROHS compliant	yes ⓘ

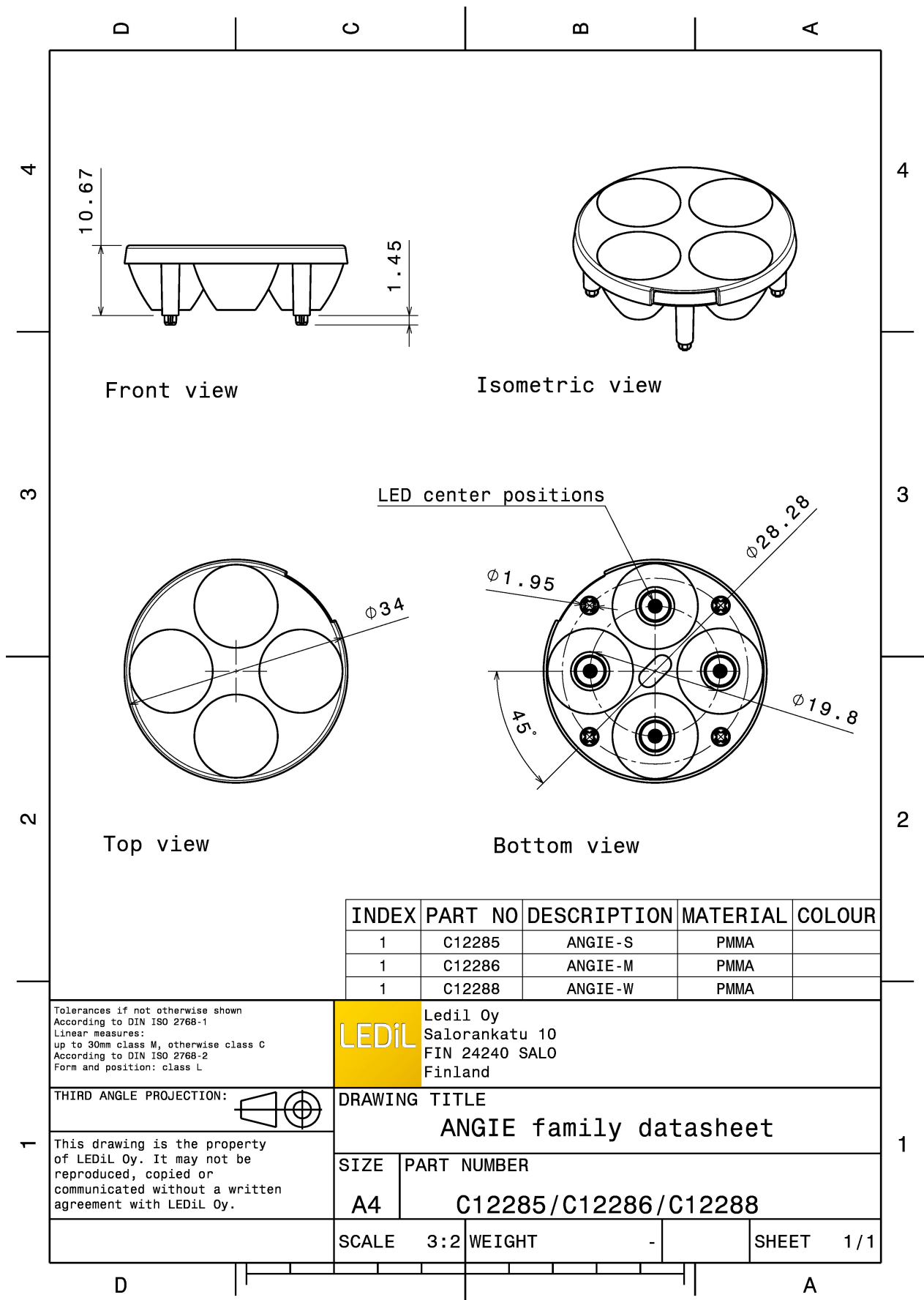
### MATERIAL SPECIFICATIONS:

Component	Type	Material	Colour	Finish
ANGIE-M	Multi-lens	PMMA	clear	



### ORDERING INFORMATION:

Component	Qty in box	MOQ	MPQ	Box weight (kg)
C12286_ANGLE-M » Box size: 480 x 280 x 300 mm	1254	132	66	8.4



Tolerances if not otherwise shown  
According to DIN ISO 2768-1  
Linear measures:  
up to 30mm class M, otherwise class C  
According to DIN ISO 2768-2  
Form and position: class L

**LEDiL** LediL Oy  
Salorankatu 10  
FIN 24240 SALO  
Finland

THIRD ANGLE PROJECTION:

DRAWING TITLE  
**ANGIE family datasheet**

This drawing is the property of LEDiL Oy. It may not be reproduced, copied or communicated without a written agreement with LEDiL Oy.

SIZE PART NUMBER  
**A4 C12285/C12286/C12288**

SCALE 3:2 WEIGHT - SHEET 1/1

**PHOTOMETRIC DATA (MEASURED):**

**CREE** ⇄

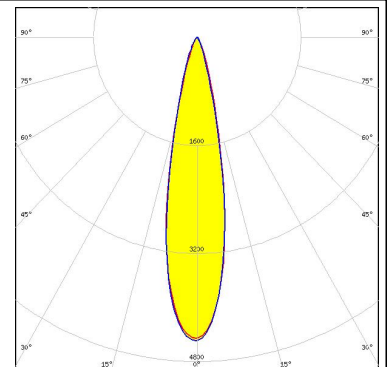
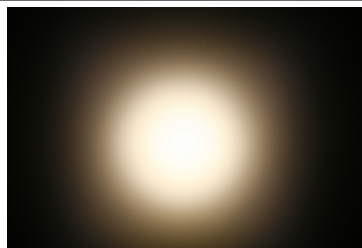
LED XP-E  
FWHM 23.0°  
Efficiency 86 %  
Peak intensity 3 cd/Im  
LEDs/each optic 1  
Light colour White  
Required components:

**CREE** ⇄

LED XP-G  
FWHM 24.0°  
Efficiency 88 %  
Peak intensity 4.6 cd/Im  
LEDs/each optic 1  
Light colour White  
Required components:

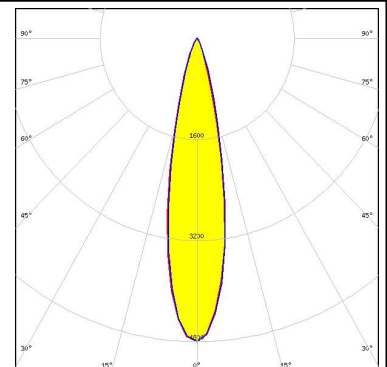
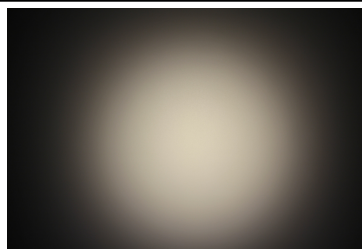
**LUMILEDS**

LED LUXEON T  
FWHM 22.0°  
Efficiency 90 %  
Peak intensity 4.4 cd/Im  
LEDs/each optic 1  
Light colour White  
Required components:



**LUMILEDS**

LED LUXEON TX  
FWHM 22.0°  
Efficiency 89 %  
Peak intensity 4.8 cd/Im  
LEDs/each optic 1  
Light colour White  
Required components:



## PHOTOMETRIC DATA (MEASURED):

**OSRAM**  
Opto Semiconductors

LED OSLON Square EC  
FWHM 22.0°  
Efficiency 88 %  
Peak intensity 4.5 cd/lm  
LEDs/each optic 1  
Light colour White  
Required components:

**OSRAM**  
Opto Semiconductors

LED OSLON SSL 150  
FWHM 16.0°  
Efficiency 91 %  
Peak intensity 6.9 cd/lm  
LEDs/each optic 1  
Light colour White  
Required components:

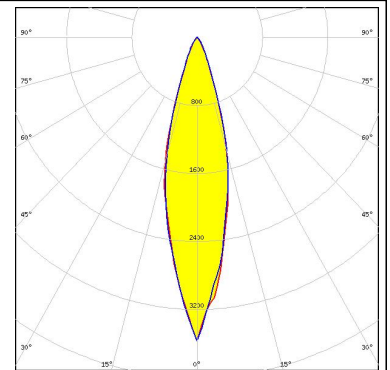
**OSRAM**  
Opto Semiconductors

LED OSLON SSL 80  
FWHM 16.0°  
Efficiency 87 %  
Peak intensity 6.3 cd/lm  
LEDs/each optic 1  
Light colour White  
Required components:

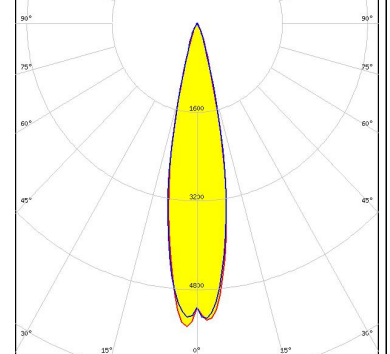
### PHOTOMETRIC DATA (SIMULATED):



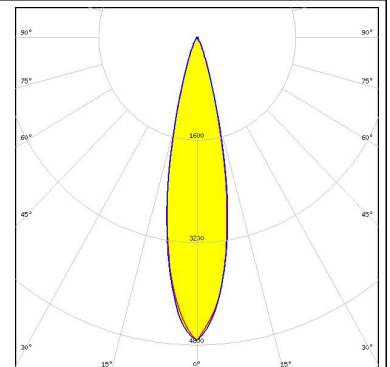
LED XP-L HD  
 FWHM 25.0°  
 Efficiency 89 %  
 Peak intensity 3.6 cd/lm  
 LEDs/each optic 1  
 Light colour White  
 Required components:



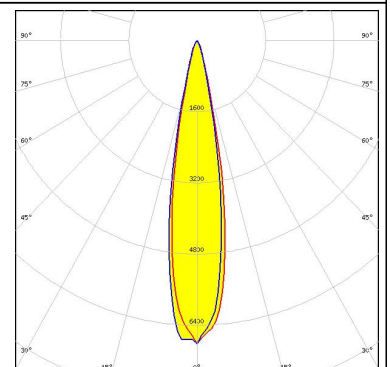
LED LUXEON H50-2  
 FWHM 22.0°  
 Efficiency 92 %  
 Peak intensity 5.5 cd/lm  
 LEDs/each optic 1  
 Light colour White  
 Required components:



LED NVSxx19B/NVSxx19C  
 FWHM 23.0°  
 Efficiency 93 %  
 Peak intensity 4.7 cd/lm  
 LEDs/each optic 1  
 Light colour White  
 Required components:



SEOL SEMICONDUCTOR  
 LED Z5M1/Z5M2  
 FWHM 20.0°  
 Efficiency 92 %  
 Peak intensity 7 cd/lm  
 LEDs/each optic 1  
 Light colour White  
 Required components:



### GENERAL INFORMATION:

NOTE: The typical beam angle will be changed by different color, chip size and chip position tolerance. The typical total beam angle is the full angle measured where the luminous intensity is half of the peak value.

### MATERIALS:

As part of our continuous research and improvement processes, and to ensure the best possible quality and availability of our products, LEDiL reserves the right to change material grades without notice.

### PRODUCT DATA USER AGREEMENT AND DISCLAIMER:

The measured data in the provided downloadable LEDiL Product Datasheets and Mechanical 2D-Drawings is rounded and provided as reference for planning. LEDiL Oy's optical specifications have been verified by conducting performance testing of the products in accordance with the company's quality system. The reported data are averaged results of multiple measurements with typical variation. LEDiL Oy reserves the right to without prior notification make changes and improvements to its products.

LEDiL Oy assumes neither warranty, nor guarantee nor any other liability of any kind for the contents and correctness of the provided data. The provided data has been generated with highest diligence but the provided data may in reality not represent the complete possible variation range of all intrinsic parameters. Therefore, in certain cases a deviation from the provided data could occur.

LEDiL Oy reserves the right to undertake technical changes of its products without further notification which could lead to changes in the provided data. LEDiL Oy assumes no liability of any kind for the possible deviation from any provided data or any other damage resulting from the usage of the provided data.

The user agrees to this disclaimer and user agreement with the download or usage of the provided files.

#### LEDiL Oy

Joensuunkatu 13  
FI-24240 SALO  
Finland

#### LEDiL Inc.

228 West Page Street  
Suite D  
Sycamore IL 60178  
USA

#### Local sales and technical support

[www.ledil.com/  
where\\_to\\_buy](http://www.ledil.com/where_to_buy)

#### Shipping locations

Salo, Finland  
Hong Kong, China

#### Distribution Partners

[www.ledil.com/  
where\\_to\\_buy](http://www.ledil.com/where_to_buy)