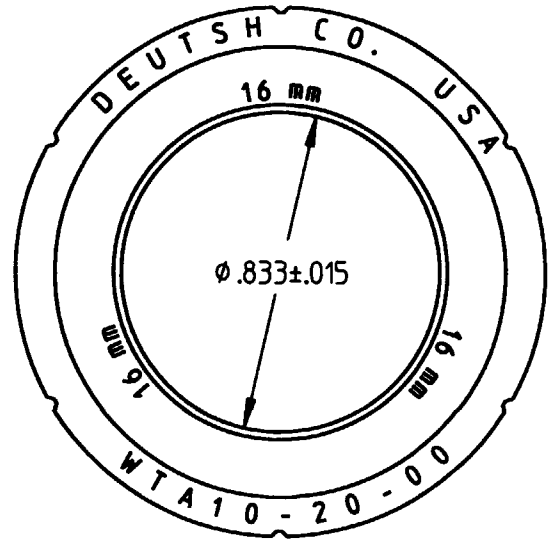
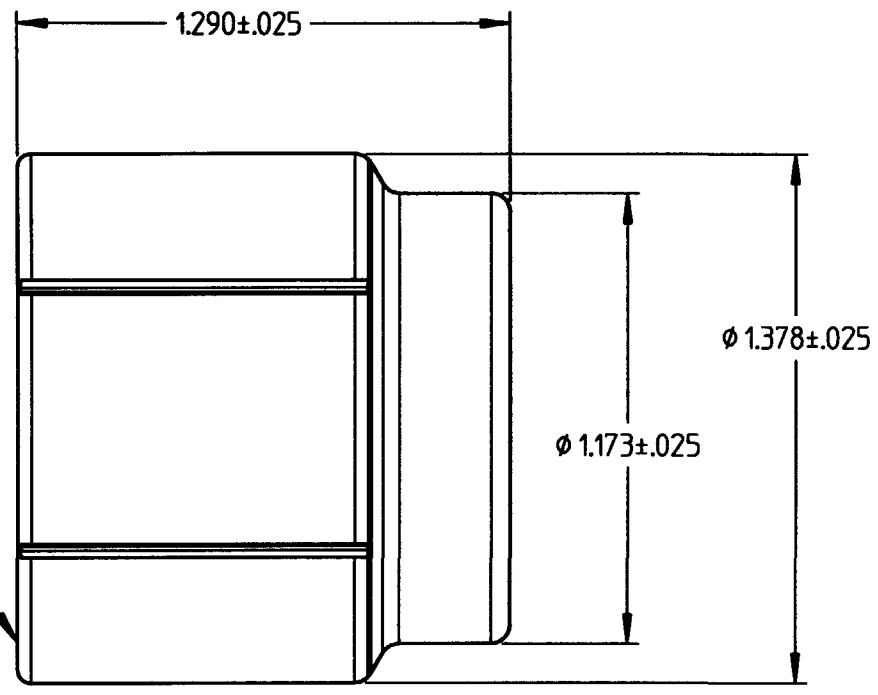


**PROPERTY OF DEUTSCH E.C.D.**  
 This drawing contains proprietary information that shall not be disclosed, duplicated,  
 nor used in whole or in part for any purpose other than to evaluate this drawing.

A 0805-201-2001

REVISIONS			
REV	DESCRIPTION	DATE	APPROVED
A	REVISED PER E.O. D1083	3/6/01	T.H.



INTERNAL THREAD  
 1.1875-18 UNEF 2B

4. ALLISON PART NUMBER WTA10-20-01/16 REF.
3. COUPLING NUT IS FOR 16 MM SPLIT CONVOLUTED TUBING.
2. MATERIAL: HIGH GRADE PLASTIC (BLACK).
1. ALL DIMENSIONS ARE IN INCHES UNLESS OTHERWISE SPECIFIED.

SIGNATURE & DATE	
DR	R. GROSS 11-1-94
CHK	J.P. 11/9/94
PE	R. D. 11-1-94
APPD	[Signature]
SCALE	NONE
WT	[Signature]

**COUPLING NUT**  
 ALLISON WTA10-20-00/16  
 BACKSHELL SYSTEM  
 SIZE 20  
 FOR 16 MM TUBING  
 ENVELOPE

CP	MATL. CODE
<b>DEUTSCH</b> ENGINEERED CONNECTING DEVICES 5733 W. Whittier Ave. Hemet, California	
<b>A</b>	0805-201-2001
CODE	SHEET 1 OF 1

0805-201-2001-ENV