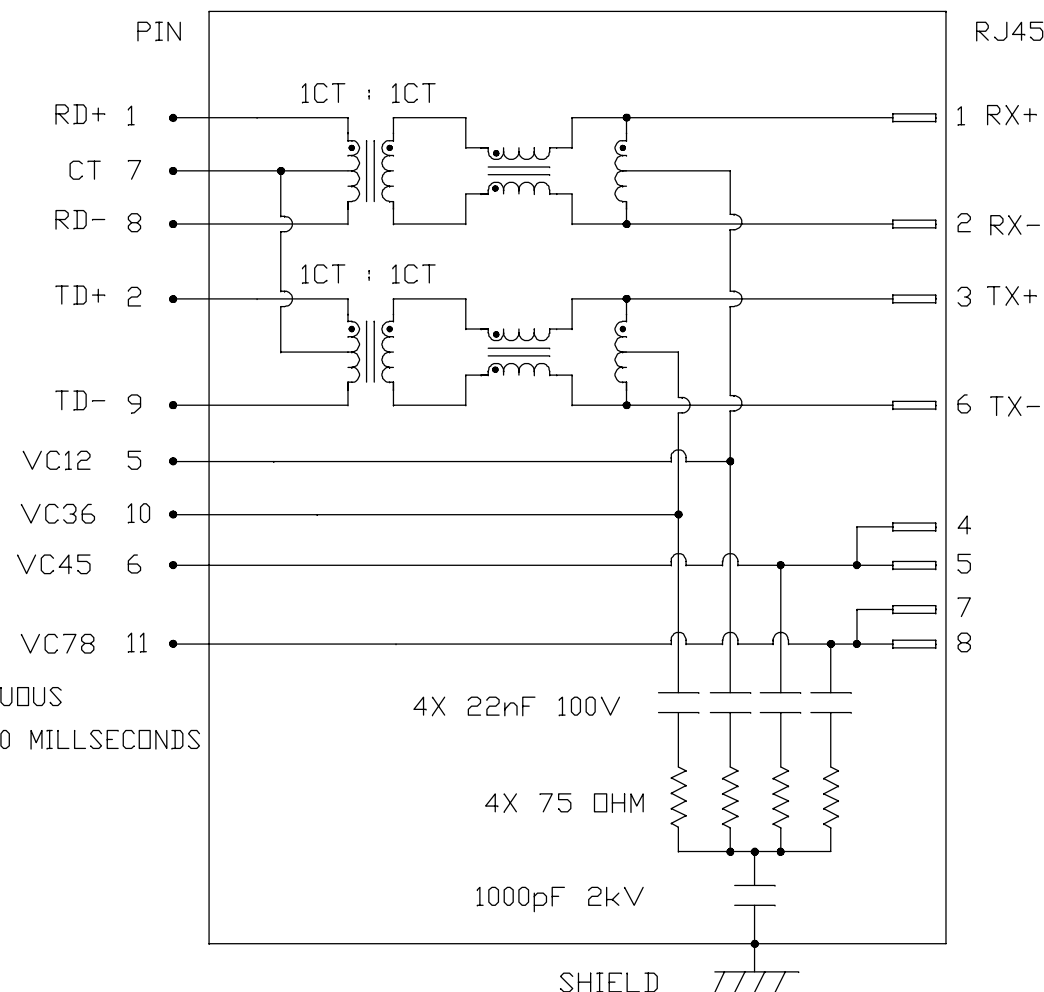




## ELECTRICAL CHARACTERISTICS @ 25°C

URNS RATIO	1CT : 1CT ±2%
QCL @ 100kHz/100mVRMS 8mA DC BIAS	350μH MIN.
INSERTION LOSS 100KHz TO 100MHZ	-1.5 dB MAX.
RETURN LOSS (MIN.) 2MHz-30MHz	-16 dB MIN.
60MHz-80MHz	-10 dB MIN.
CROSS TALK 100KHz - 100MHZ	-30 dB MIN.
HIPOT (ISOLATION VOLTAGE) 100% OF PRODUCTION TESTED TO COMPLY WITH IEEE 802.3 ISOLATION REQUIREMENTS	2250 VDC
BALANCED DC LINE CURRENT	350mA MAX. @ 57 VDC CONTINUOUS 500mA MAX. @ 57 VDC FOR 200 MILLISECONDS
OPERATING TEMPERATURE:	0°C TO +70°C.

## SCHEMATIC



ORIGINATED BY  
CHOW WANCHUNG  
DATE 2018-03-24

DRAWN BY  
XIE YIMING  
DATE 2018-03-24

TITLE  
10/100 MagJack®  
PoE  
0813-1X1T-57-F

PART NO. / DRAWING NO.  
08131X1T57-F

FILE NAME  
08131X1T57-F\_F.DWG

STANDARD DIM.  
TOL. IN INCH

.X  
.XX  
.XXX

[ ] METRIC DIM.  
AS REF.

UNIT : INCH [mm]  
SCALE : N/A  
SIZE : A4

REV. : F

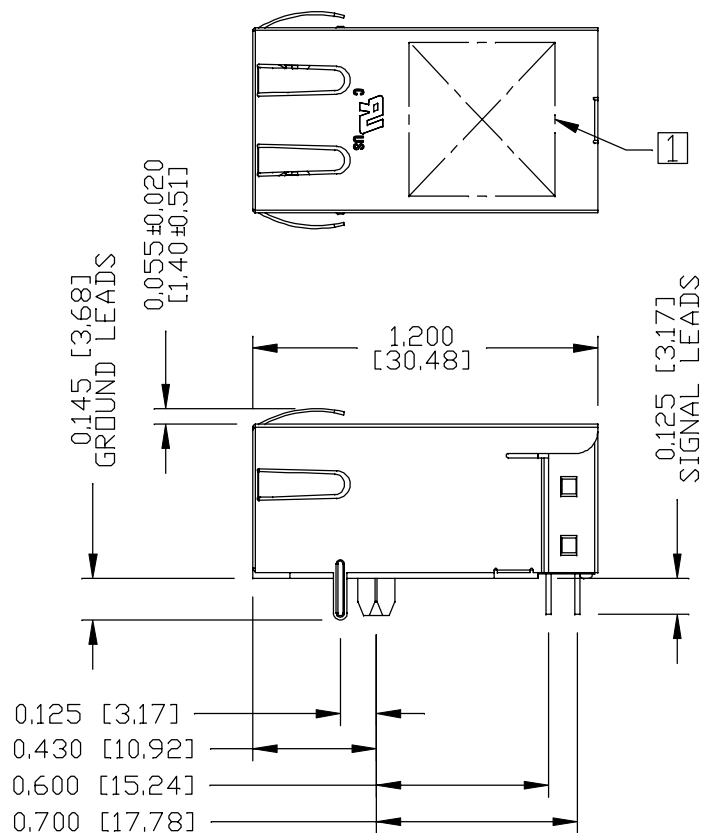
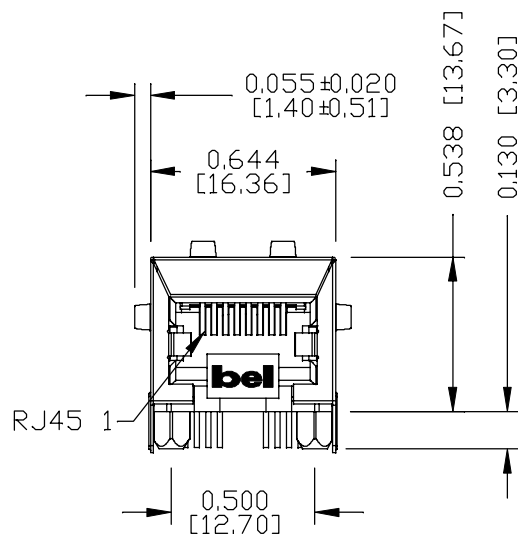
PAGE : 2



THE INFORMATION CONTAINED HEREIN IS CONSIDERED "PROPRIETARY" TO BEL FUSE INC. AND SHALL NOT BE COPIED, REPRODUCED OR DISCLOSED WITHOUT THE WRITTEN APPROVAL OF BEL FUSE INC.

## MECHANICAL SPECIFICATION

RoHS



### NOTES:

PLASTIC HOUSING: THERMOPLASTIC PBT, BLACK  
 FLAMMABILITY RATING UL 94V-0  
 CONTACTS: 50 MICRO-INCH HARD GOLD PLATING OR EQUIVALENT,  
 WITH UNDERPLATING OF 50 MICRO-INCH NICKEL.  
 OUTPUT PINS: TIN-COATED COPPER WIRE, DIA 0.018 INCH,  
 100 MICRO-INCH MIN MATTE TIN. PINS ARE SOLDER DIPPED.  
 METAL SHIELD: NICKEL PLATED ON COPPER ALLOY,  
 (ALL GROUND LEAD ARE SOLDER DIPPED)  
 JACK CAVITY CONFORMS TO FCC RULES AND REGULATIONS.

1. MARK PART WITH MFG LOGO, MFG NAME, PART NUMBER,  
 DATE CODE.

**cULus** UL RECOGNIZED - FILE #E196366 AND E169987.

2. THE PRODUCT IS RoHS COMPLIANT.
3. THE PART IS RECOMMENDED FOR WAVE SOLDERING.  
 THE SUGGESTED PEAK WAVE SOLDERING CONDITION IS  
 260°C MAX AND 10 SECONDS MAX.

ORIGINATED BY  
 ANTON LIAO  
 DATE 2018-03-24

DRAWN BY  
 JESSE LI  
 DATE 2018-03-24

TITLE  
 10/100 MagJack®  
 PoE  
 0813-1X1T-57-F

PART NO. / DRAWING NO.  
 08131X1T57-F

FILE NAME  
 08131X1T57-F\_F.DWG

STANDARD DIM.  
 TOL. IN INCH

.X  
 .XX  
 .XXX

[ ] METRIC DIM.  
 AS REF.

UNIT : INCH [mm]  
 SCALE : N/A  
 SIZE : A4

REV. : F

PAGE : 3



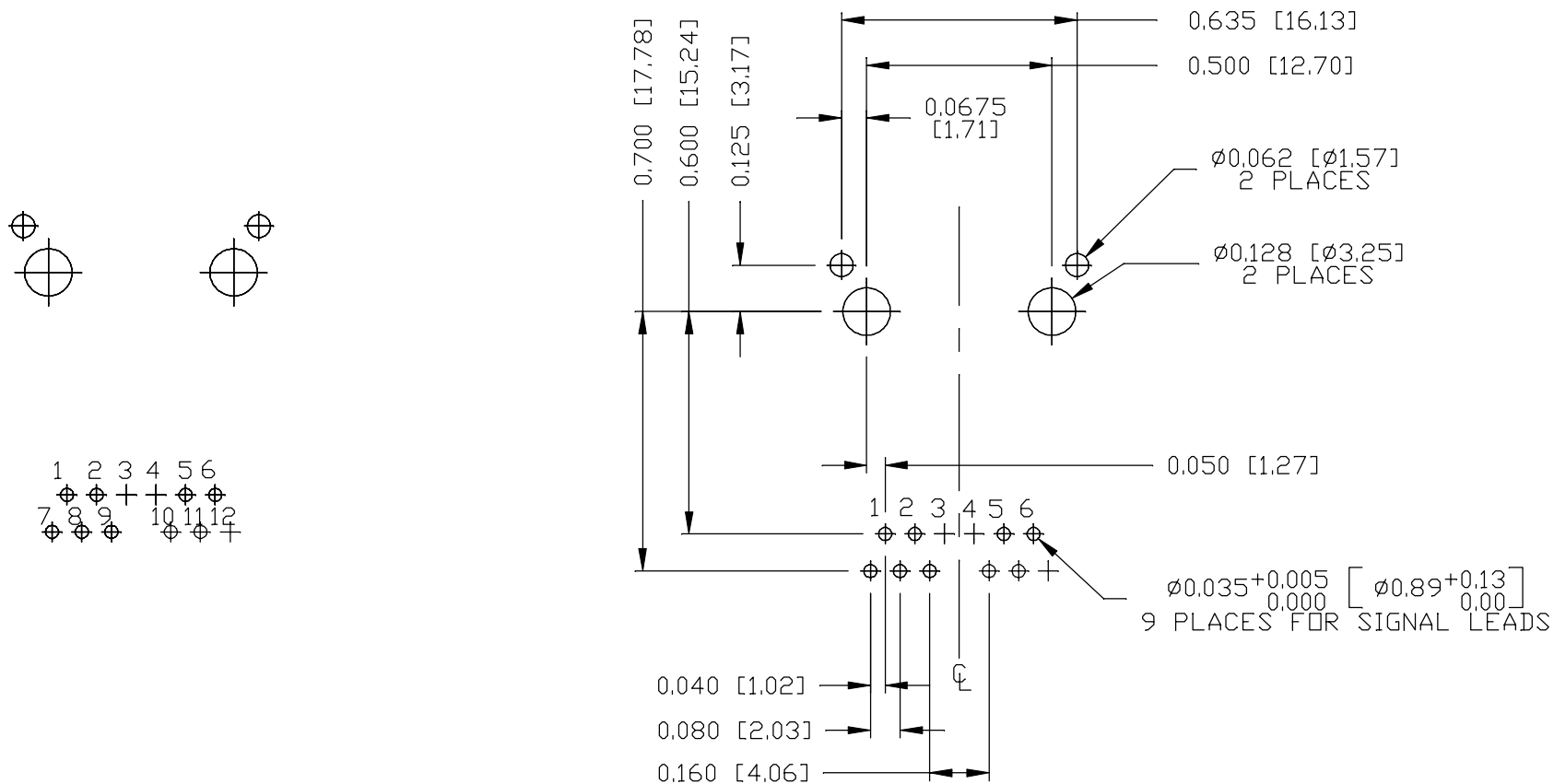
THE INFORMATION CONTAINED HEREIN IS CONSIDERED  
"PROPRIETARY" TO BEL FUSE INC. AND SHALL NOT BE  
COPIED, REPRODUCED OR DISCLOSED WITHOUT THE  
WRITTEN APPROVAL OF BEL FUSE INC.

RoHS



# RECOMMENDED PCB FOOTPRINT

## COMPONENT SIDE VIEW



ORIGINATED BY  
ANTON LIAO  
DATE 2018-03-24

DRAWN BY  
JESSE LI  
DATE 2018-03-24

TITLE  
10/100 MagJack®  
PoE  
0813-1X1T-57-F

PART NO. / DRAWING NO.  
08131X1T57-F

FILE NAME  
08131X1T57-F\_F.DWG

STANDARD DIM.  
TOL. IN INCH

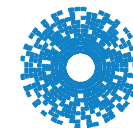
.X  
.XX  
.XXX

[ ] METRIC DIM.  
AS REF.

UNIT : INCH [mm]  
SCALE : N/A  
SIZE : A4

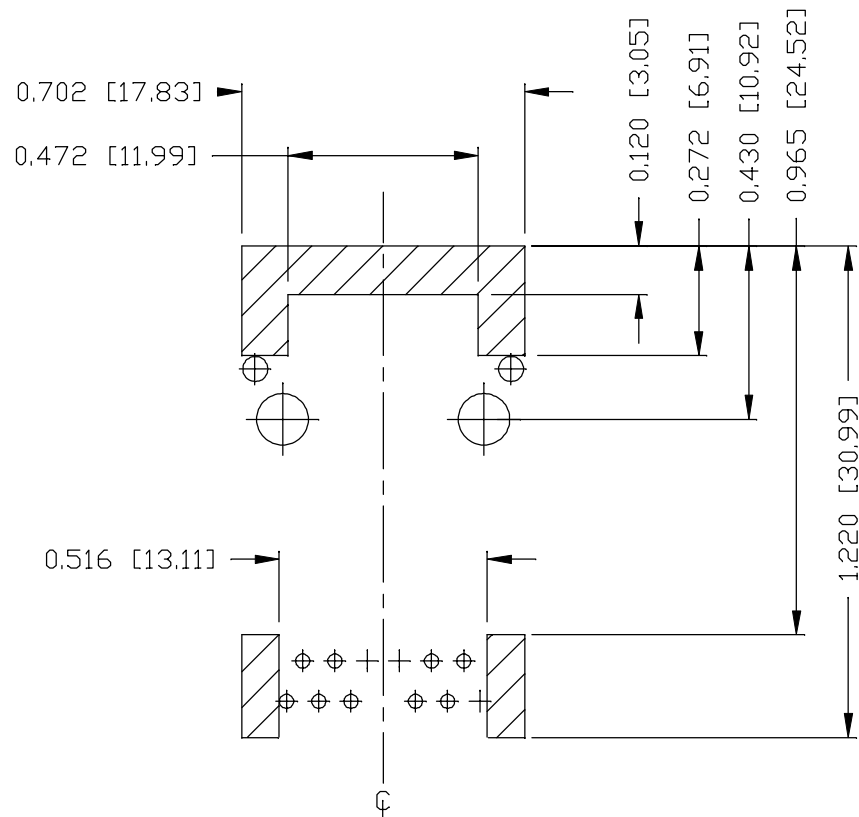
REV. : F

PAGE : 4





**bel** MAGNETIC  
SOLUTIONS  
a bel group

THE INFORMATION CONTAINED HEREIN IS CONSIDERED "PROPRIETARY" TO BEL FUSE INC. AND SHALL NOT BE COPIED, REPRODUCED OR DISCLOSED WITHOUT THE WRITTEN APPROVAL OF BEL FUSE INC.



#### NOTES

THE SHADED AREA ON THE CUSTOMER BOARD ARE RECOMMENDED TO BE CLEAR OFF ANY VIA HOLE OR COMPONENT PAD.

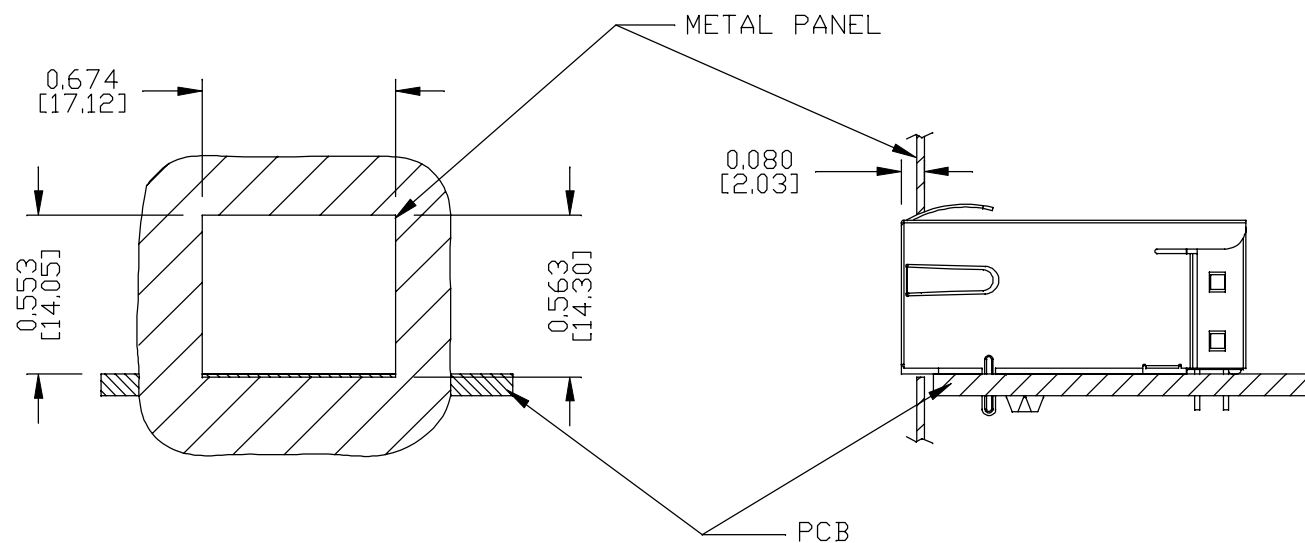
REV. : F										PAGE : 5																			
ORIGINATED BY ANTON LIAO DATE 2018-03-24					TITLE  10/100 MagJack® PoE 0813-1X1T-57-F										PART NO. / DRAWING NO.  08131X1T57-F					STANDARD DIM. TOL. IN INCH					[ ] METRIC DIM. AS REF.				
DRAWN BY JESSE LI DATE 2018-03-24															FILE NAME  08131X1T57-F_F.DWG					.X					UNIT : INCH [mm]				
										.XX		SCALE : N/A																	
										.XXX		±0.004					SIZE : A4												
 <b>bel</b> <b>MAGNETIC SOLUTIONS</b> a bel group																													

THE INFORMATION CONTAINED HEREIN IS CONSIDERED "PROPRIETARY" TO BEL FUSE INC. AND SHALL NOT BE COPIED, REPRODUCED OR DISCLOSED WITHOUT THE WRITTEN APPROVAL OF BEL FUSE INC.

RoHS



# SUGGESTED PANEL OPENING



## NOTES:

THE DISTANCE OF PANEL INSIDE SURFACE RELATIVE TO FRONT SURFACE OF PART IS ONLY A SUGGESTION. IN CASE THIS DISTANCE IS DIFFERENT, THE REQUIRED PANEL OPENING DIMENSIONS CHANGE ACCORDINGLY.

### PACKING INFORMATION

PACKING TRAY : 0200-9999-F1(TOP)

0200-9999-F2(BOTTOM)

PACKING QUANTITY : 40 PCS FINISHED GOODS PER TRAY

10 TRAYS (400 PCS FINISHED GOODS) PER CARTON BOX

NOTER: CARDBOARDS ARE PLACED BETWEEN LAYERS OF PACKING TRAY INSIDE CARTON BOX

(INCLUDE THE UPPERMOST AND LOWERMOST TRAY)

REV. : F PAGE : 6

ORIGINATED BY  
ANTON LIAO  
DATE 2018-03-24

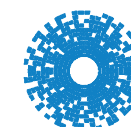
DRAWN BY  
JESSE LI  
DATE 2018-03-24

TITLE  
10/100 MagJack®  
PoE  
0813-1X1T-57-F

PART NO. / DRAWING NO.  
08131X1T57-F

FILE NAME  
08131X1T57-F\_F.DWG

STANDARD DIM. TOL. IN INCH		[ ] METRIC DIM. AS REF.
.X		UNIT : INCH [mm]
.XX		SCALE : N/A
.XXX	±0.005	SIZE : A4



**bel** MAGNETIC  
SOLUTIONS  
a bel group