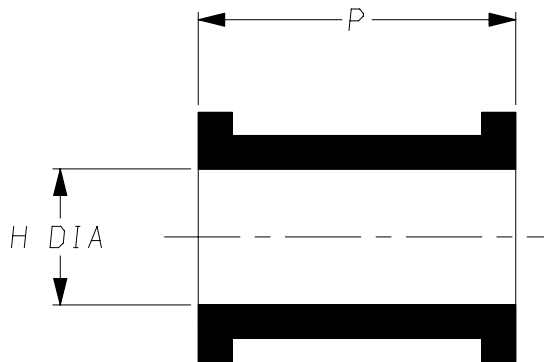
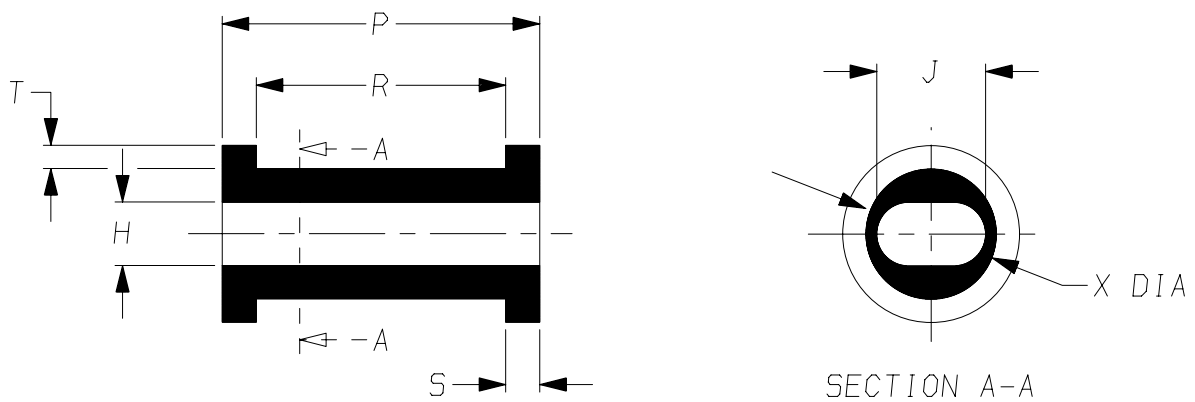


a) Part as supplied

210W3\*\*



b) Part after unrestricted recovery



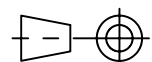
**DIMENSIONS** in millimetres  
(in inches, for reference)

Part No.	H		J		P		R	S	T	X
	Min a	Max b	Min a	Max b	±2 a	Max b	±10% b	±10% b	±10% b	±10% b
210W321	12 {0.47}	5.9 {0.23}	12 {0.47}	10.1 {0.40}	25 {0.98}	31 {1.22}	25 {0.98}	3.0 {0.12}	2.0 {0.08}	12 {0.47}
210W331	16 {0.63}	7.8 {0.31}	16 {0.63}	12.2 {0.48}	27 {1.06}	32 {1.26}	24 {0.94}	4.0 {0.16}	2.5 {0.10}	14 {0.55}

**Copyright (!)**

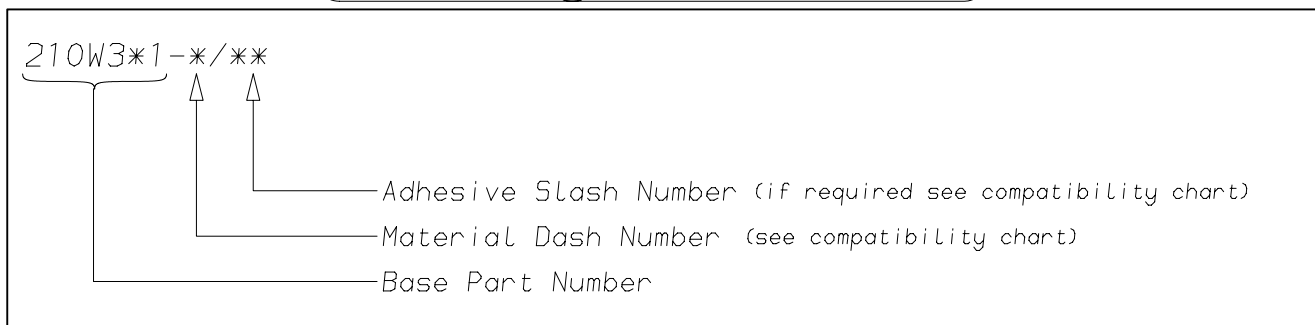
The copyright in this drawing is the property of Tyco Electronics UK Ltd. The drawing is issued on the condition that it is not copied, reproduced or disclosed to a third party, either in whole or in part without the prior written consent of Tyco Electronics UK Ltd.

Drawn A.LILLEY. Checked Issue 3 Date January 2007 Conforms to ISO Recommendations  
3rd Angle Projection  
Approval Design MKTG. Q.A. Not to Scale



<b>Raychem</b>		<b>Specification Control Drawing</b>		Part Number
				210W3** Issue 3
Iss.	Date	E.C.R. No.	Details of Change	
2	January 1997	CR0101	210W321 - R dim was 22	
3	January 2007	CR06-HM-012	Imperial dimensions added	
3	January 2007	CR06-DM-104	-12 Material description name changed	

### (Ordering Information)



### (COMPATIBILITY CHART)

Material Dash Number	Material Description	SPEC Number	Coating Slash Number
-3	POLYOLEFIN, SEMI-RIGID	RT-301, RK-6703	/42, /86, /180
-4	POLYOLEFIN, FLEXIBLE	RT-1304 RT-1050	/42, /86, /180
-12	FLUOROELASTOMER, FLEXIBLE	RT-1312, RW-2071	/225
-25	ELASTOMER, FLUID RESISTANT	RT-1325, RK-6713	/42, /86, /225
-100	ZERO HALOGEN	RT-1323, RK-6717	/86, /180
-130	POLYOLEFIN, COMMERCIAL FLEXIBLE	RW-2008	/42

#### NOTES

- ① As supplied dimensions are for uncoated parts, when coating is added entry diameters will reduce by 1.5mm Max.

Tyco Electronics UK Ltd. Faraday Road, Swindon, Wiltshire, SN3 5HH England Telephone: (01793) 528171 Fax: 572516	Tyco Electronics Corporation 300, Constitution Drive, Menlo Park, CA 94025 USA Telephone (650) 361-3860 Fax: (650) 361-5579
Cage Code K1010	Cage Code 06090