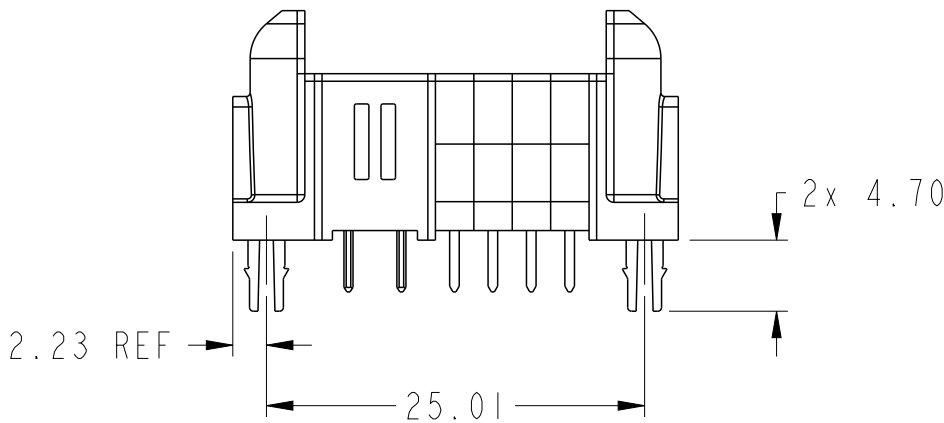
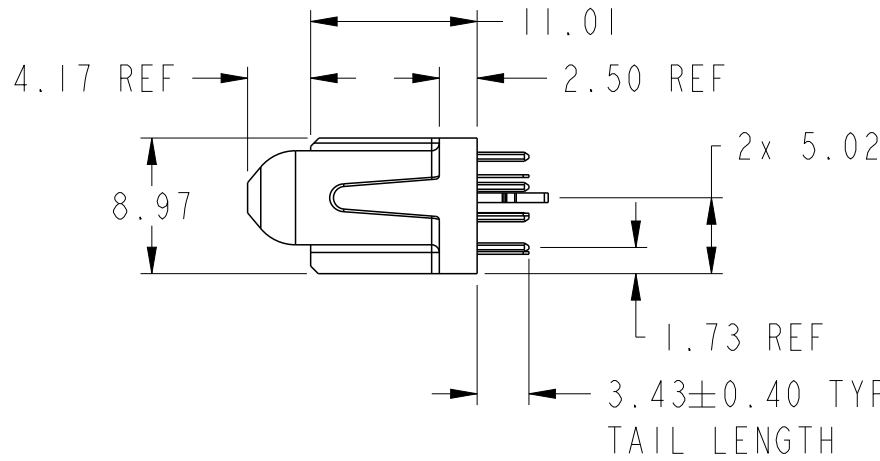
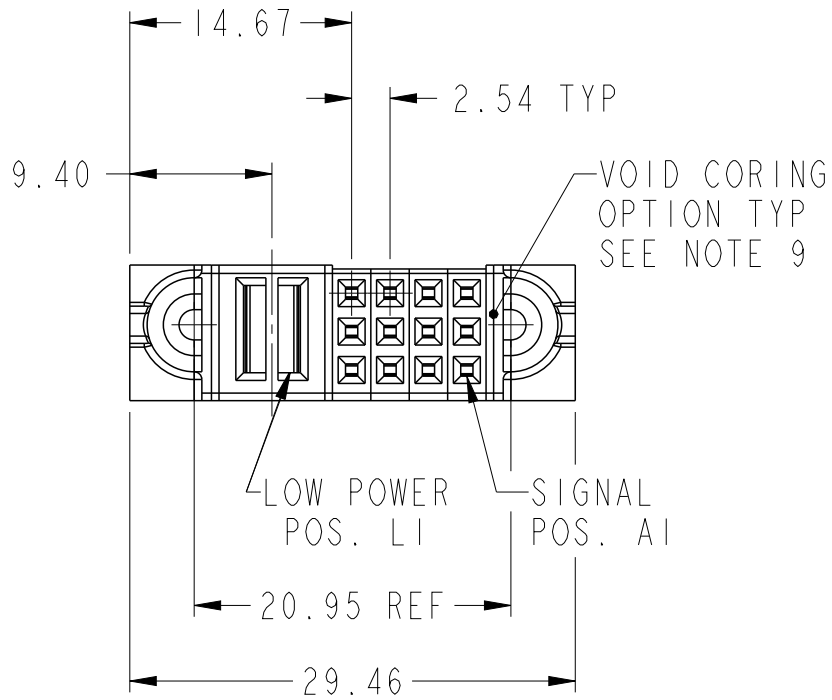
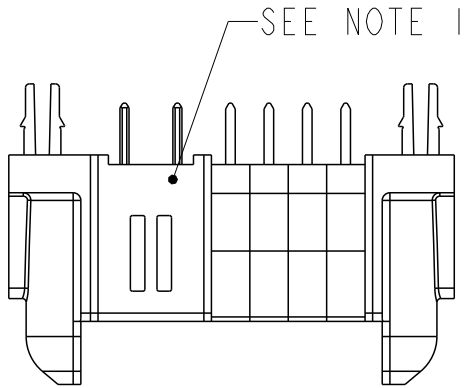


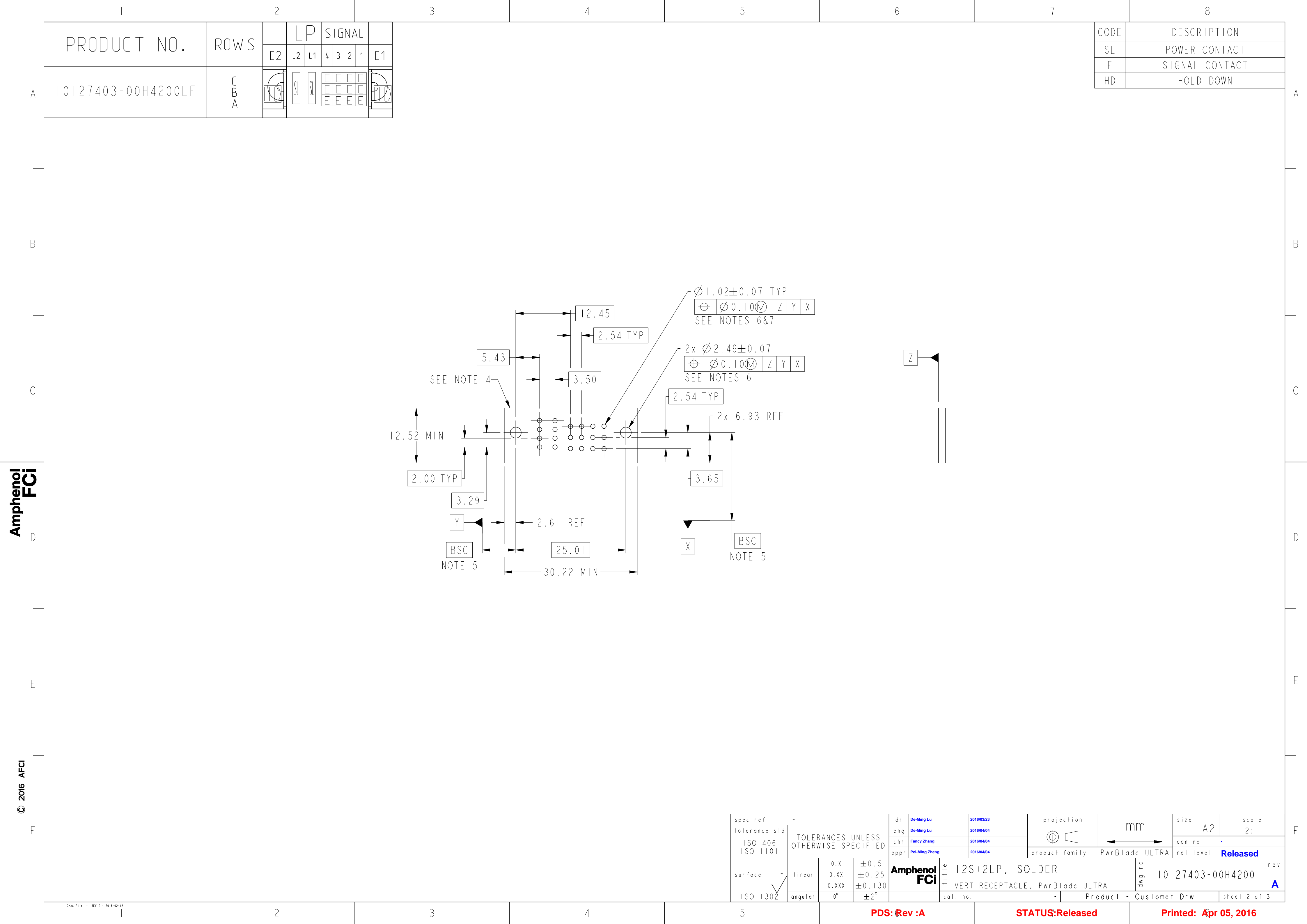
PRODUCT NUMBER
10127403-00H4200LF



spec ref -				dr	De-Ming Lu	2016/03/23	<div>projection</div> <div></div>	<div>mm</div> <div></div>	size	A2	scale	2:1							
tolerance std				eng	De-Ming Lu	2016/04/04			ecn no	-	rel level	Released							
TOLERANCES UNLESS OTHERWISE SPECIFIED				chr	Fancy Zhang	2016/04/04													
				appr	Pei-Ming Zheng	2016/04/04													
				product family				PwrBlade ULTRA											
<div>surface</div> <div></div> <div>ISO 1302</div>				linear	0.X	±0.5	Amphenol FCI	title	12S+2LP, SOLDER VERT RECEPTACLE, PwrBlade ULTRA				dwg no	10127403-00H4200		rev	A		
					0.XX	±0.25													
					0.XXX	±0.130													
					angular	0°												±2°	
				cat. no.				-				Product - Customer Drw				sheet 1 of 3			
				PDS: Rev :A				STATUS:Released				Printed: Apr 05, 2016							

Amphenol
FCI

© 2016 APCI



PRODUCT NO.	ROWS			LP		SIGNAL			
		E2	L2	L1	4	3	2	1	
		10127403-00H4200LF	C	B	A				

CODE	DESCRIPTION
SL	POWER CONTACT
E	SIGNAL CONTACT
HD	HOLD DOWN

spec ref		-		dr		De-Ming Lu		2016/03/23		projection		mm		size		A2		scale		2:1			
tolerance std		ISO 406		eng		De-Ming Lu		2016/04/04						ecn no		-		rel level		Released			
ISO 1101		TOLERANCES UNLESS OTHERWISE SPECIFIED		chr		Fancy Zhang		2016/04/04						appr		Pei-Ming Zheng						2016/04/04	
										product family		PwrBlade ULTRA											
surface		-		linear		0.X		±0.5		Amphenol FCI		title		12S+2LP, SOLDER		dwg no		10127403-00H4200		rev		A	
				0.XX		±0.25		VERT RECEPTACLE, PwrBlade ULTRA															
				0.XXX		±0.130																	
ISO 1302				angular		0°		±2°		cat. no.		-		Product - Customer Drw				sheet 2 of 3					

1

2

3

4

5

6

7

8

PRODUCT NUMBER

10127403-00H4200LF

A

NOTES:

1.

"FCI", PART NUMBER AND DATE CODE TO BE MARKED ON THIS SURFACE.
THE P/N CAN BE OMITTED IF THERE IS NOT ENOUGH SPACE ON THIS SURFACE.

2.

MATERIALS:
HOUSING: GLASS FILLED WITH HIGH TEMP POLYAMIDE, UL94V-0.
POWER CONTACTS: COPPER ALLOY.
SIGNAL CONTACTS: COPPER ALLOY.
HOLD DOWN: COPPER ALLOY.

3.

PLATING SPECIFICATION: FCI 10135186.

4.

DENOTES CONNECTOR KEEP OUT ZONE.

5.

DATUM AND BASIC DIMENSION ARE ESTABLISHED BY CUSTOMER.

6.

ALL HOLE DIAMETERS ARE FINISHED HOLE SIZES.

7.

1.150±0.025mm DRILLED HOLE PLATED WITH 7.62µm MIN Sn OVER
25.4µm-76.2µm Cu PLATING TO ACHIEVE A 1.02±0.07mm FINISHED HOLE.

8.

PRODUCT SPECIFICATION: FCI GS-12-1176.
APPLICATION SPECIFICATION: FCI GS-20-0389.
PRODUCT PACKAGE SPECIFICATION: FCI GS-14-2354.

9.

THE VOID CORING BETWEEN POWER MODULES, SIGNAL MODULES AND END MODULES ARE
OPTIONAL AND THE SHAPE MAY BE DIFFERENT TO OPTIMIZE THE MOLDING
PROCESS. THE VOID CORING WILL NOT EFFECT THE PRODUCT FUNCTION.

Amphenol
FCi

D

E

F

spec ref

-

tolerance std

ISO 406
ISO 1101

surface

ISO 1302

TOLERANCES UNLESS
OTHERWISE SPECIFIED

linear

0.X

±0.5

0.XX

±0.25

0.XXX

±0.130

angular

0°

±2°

dr

De-Ming Lu

2016/03/23

eng

De-Ming Lu

2016/04/04

chr

Fancy Zhang

2016/04/04

appr

Pei-Ming Zheng

2016/04/04

projection

mm

size

A2

scale

2:1

ecn no

-

product family

PwrBlade ULTRA

rel level

Released

Amphenol
FCi

title

12S+2LP, SOLDER
VERT RECEPTACLE, PwrBlade ULTRA

dwg no

10127403-00H4200

rev

A

cat. no.

-

Product - Customer Drw

sheet 3 of 3

1

2

3

4

5

PDS: Rev :A

STATUS:Released

Printed: Apr 05, 2016