

High Frequency Ceramic Solutions

2.45 GHz Band Pass Filter

P/N 2450BP39D100E

Detail Specification: 03/13/09

Page 1 of 2

General Specifications

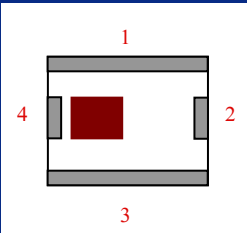
Part Number	2450BP39D100E	
Frequency (MHz)	2400 - 2500	
Insertion Loss	1.2 dB max.	
Return Loss	9.5 dB min.	
Attenuation (min.)	880 ~ 915MHz	30 dB
Attenuation (min.)	1710 ~ 1785MHz	30 dB
Attenuation (min.)	1850 ~ 1910MHz	25 dB
Attenuation (min.)	2700MHz	2 dB
Attenuation (min.)	4800 ~ 5000MHz	25 dB
Attenuation (min.)	7200 ~ 7500MHz	15 dB

Input Power	500 mW max.
Impedance	50 Ω
Reel Quantity	3,000
Operating Temperature	-40 to +85°C
Storage Temperature	+5 to +35°C, Humidity 45-75%RH, 12 mos. max*

* - 1 yr shelf life in bag; 1 week shelf life out of bag;
Vacuum reseal unused reel

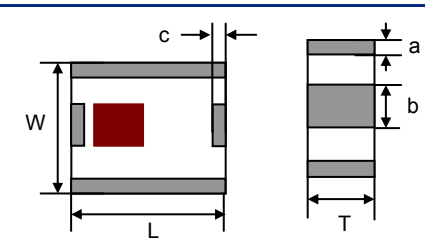
Terminal Configuration

No.	Function
1	GND
2	OUT
3	GND
4	IN



Mechanical Dimensions

	In	mm
L	0.098 ± 0.008	2.50 ± 0.20
W	0.079 ± 0.008	2.00 ± 0.20
T	0.037 ± 0.004	0.95 ± 0.10
a	0.012 ± 0.008	0.30 ± 0.20
b	0.024 ± 0.008	0.60 ± 0.20
c	0.012 ± 0.008	0.30 ± 0.20

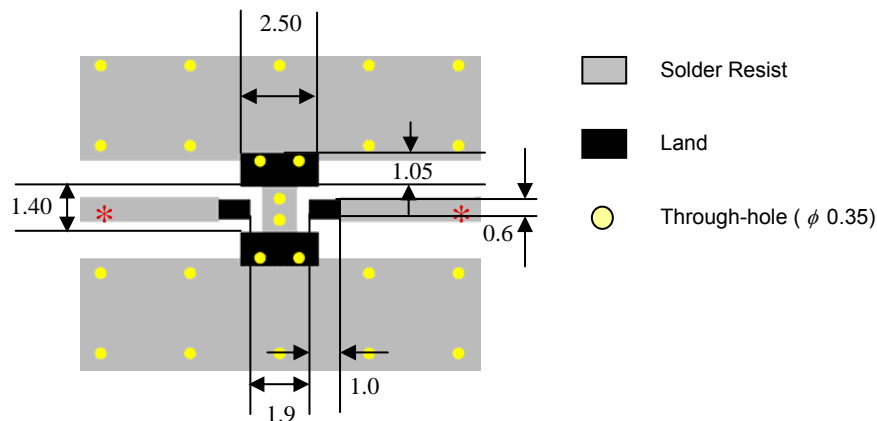


Mounting Considerations

Mount these devices with brown mark facing up.

* Line width should be designed to provide 50 Ω impedance matching characteristics.

Units: mm



Johanson Technology, Inc. reserves the right to make design changes without notice.

All sales are subject to Johanson Technology, Inc. terms and conditions.

High Frequency Ceramic Solutions

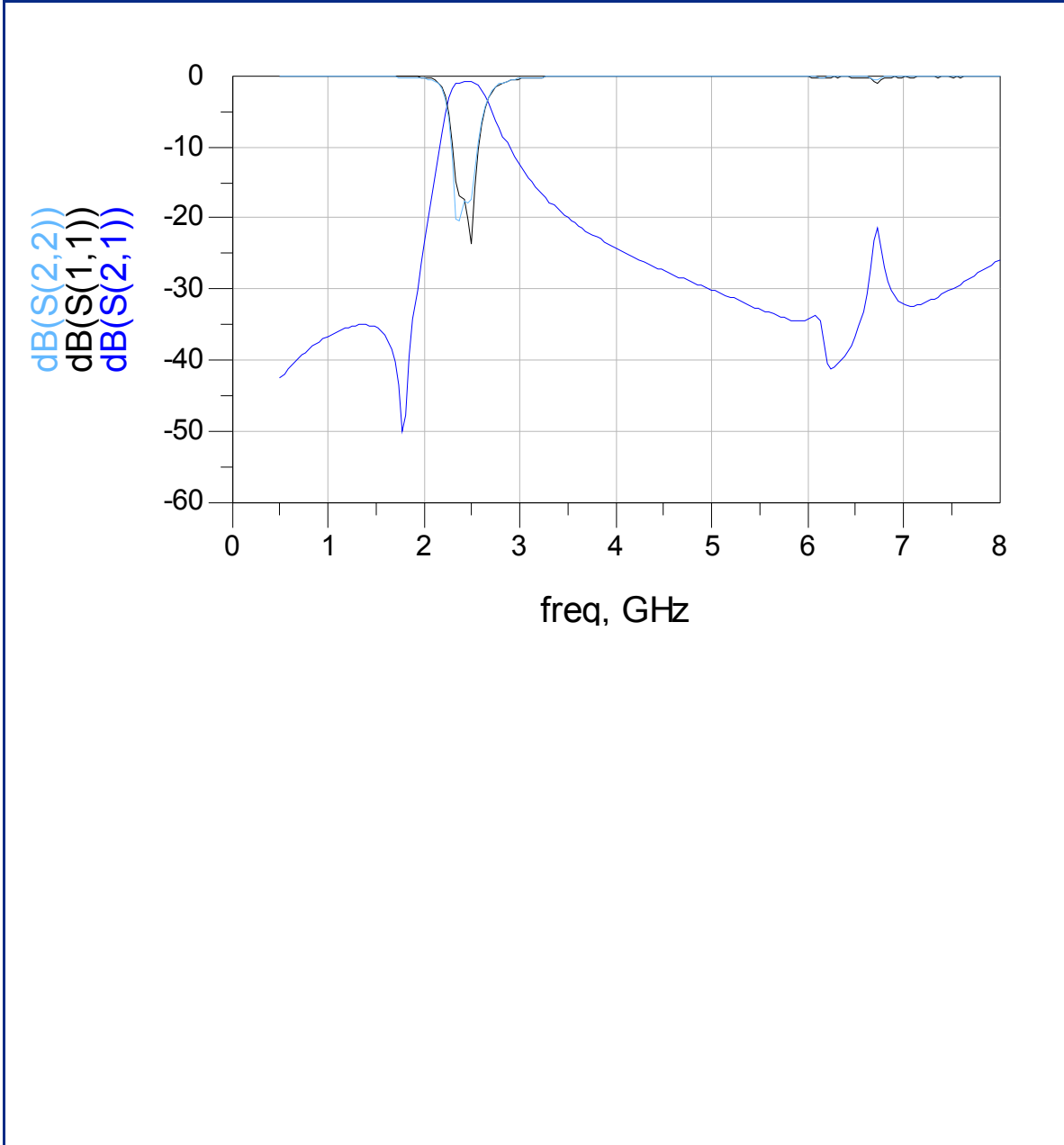
2.45 GHz Band Pass Filter

P/N 2450BP39D100E

Detail Specification: 03/13/09

Page 2 of 2

Typical Electrical Performance (T=25°C)



Johanson Technology, Inc. reserves the right to make design changes without notice.

All sales are subject to Johanson Technology, Inc. terms and conditions.



www.johansontechnology.com

4001 Calle Tecate • Camarillo, CA 93012 • TEL 805.389.1166 FAX 805.389.1821

2009 Johanson Technology, Inc. All Rights Reserved