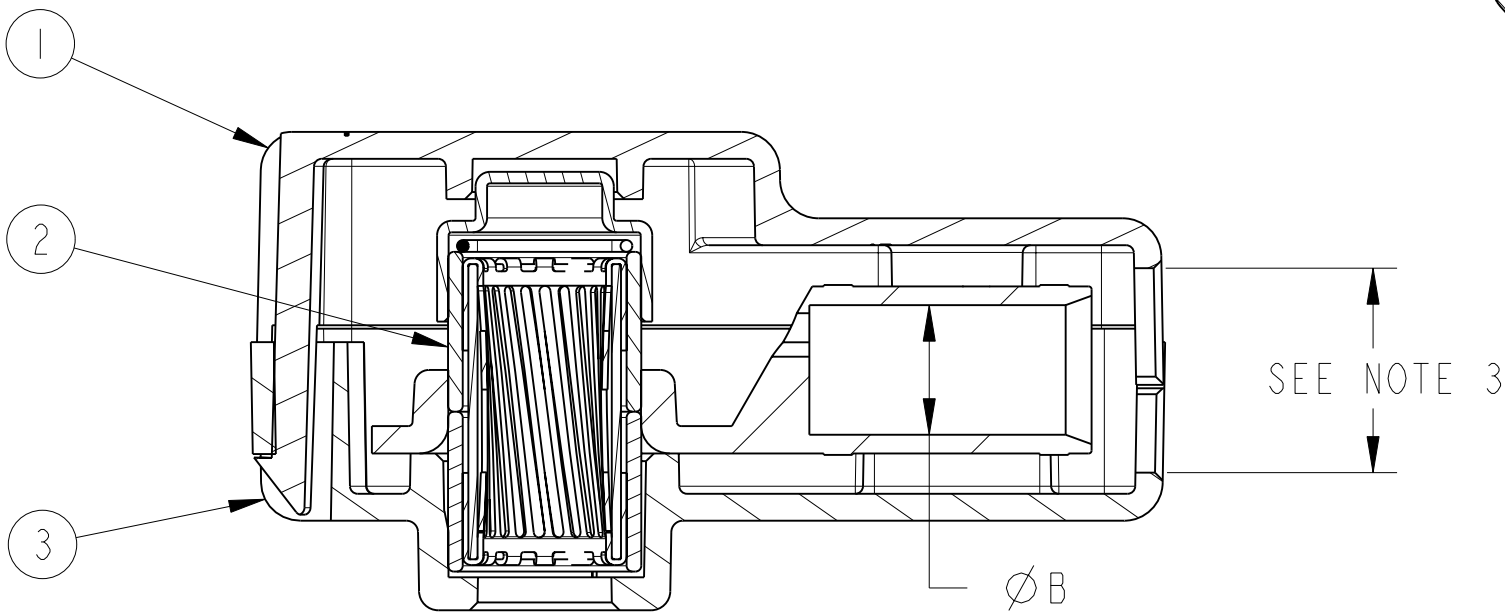
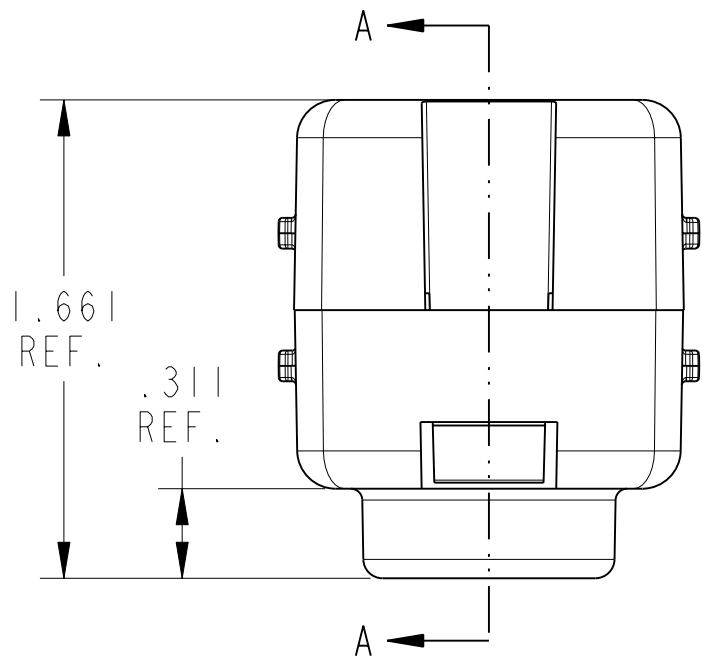
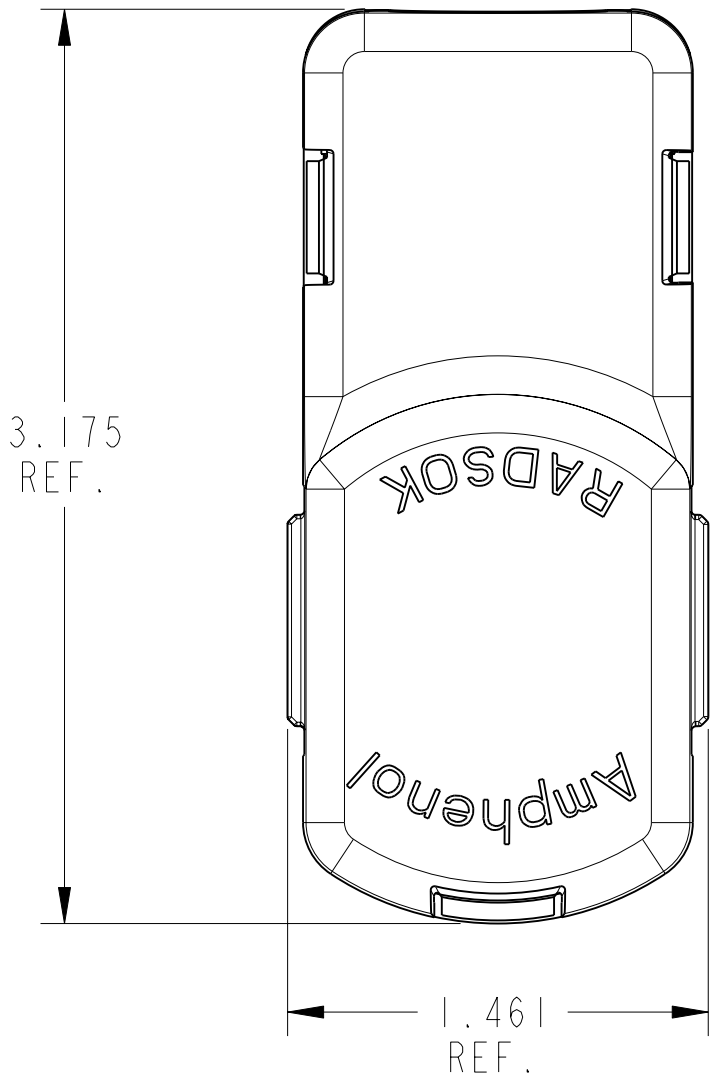


4

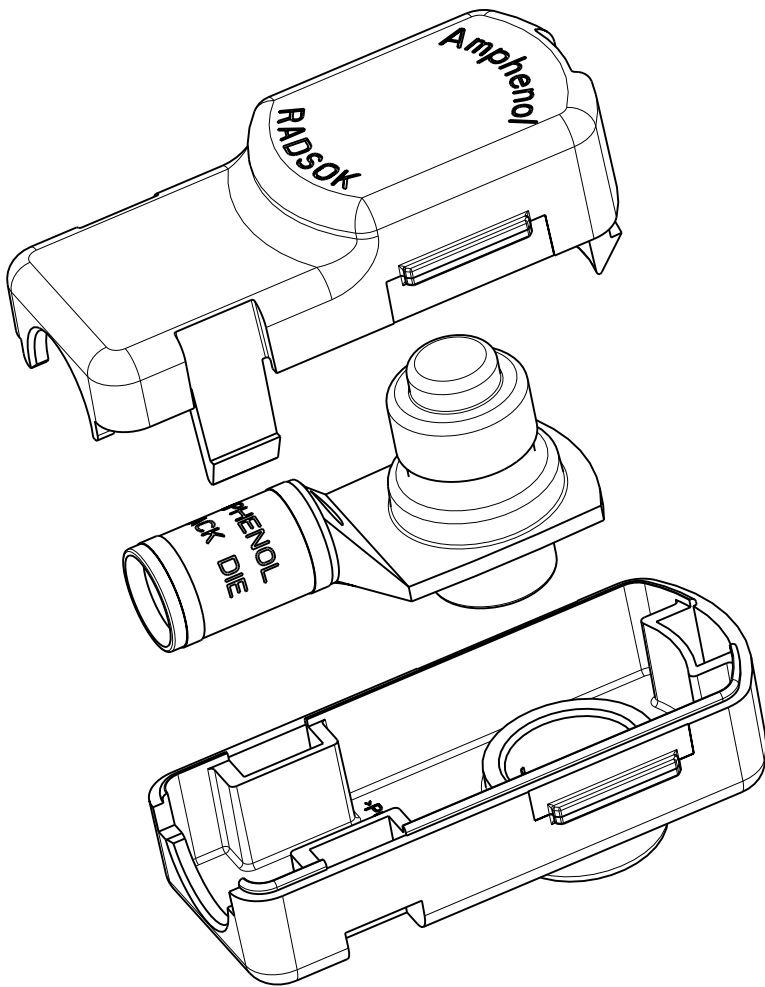
3

2

PART NUMBER	WIRE GAGE	ØB	ITEM #2	RADSOK FINISH
10-647186-1X1	1/0 AWG	.390	10-647161-1X1	SILVER
10-647186-1X4	1/0 AWG	.390	10-647161-1X4	NICKEL
10-647186-1X5	1/0 AWG	.390	10-647161-1X5	GOLD
10-647186-2X1	2/0 AWG	.450	10-647161-2X1	SILVER
10-647186-2X4	2/0 AWG	.450	10-647161-2X4	NICKEL
10-647186-2X5	2/0 AWG	.450	10-647161-2X5	GOLD



SECTION A-A



SCALE 1.000

- 4) ASSEMBLY HOUSINGS ARE UL 94 V-0 RATED.
- 3) THE MAXIMUM WIRE JACKET OD IS .605 DIAMETER.
- 2) CONNECTOR SHOWN MATES WITH PIN CONTACT PART NUMBER C10-647178-00( ) OR EQUIV.
- 1) LUG MUST BE CRIMPED TO WIRE BEFORE TOP & BOTTOM HOUSINGS ARE SNAPPED TOGETHER FOR FINAL ASSEMBLY.

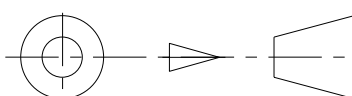
NOTES:

THE USE OF THIS DOCUMENT IS UNLIMITED. HOWEVER, DOCUMENTS REFERENCED HEREON MAY CONTAIN LIMITED RIGHTS DATA.

RELEASED / Feb . 07 2007, 09:58 AM

N/A	PRO/ENGINEER INFORMATION
N/A	Pro/e Model Used:
	10-647186.ASSEM
NEXT ASSEMBLY	Drawing Name:
	10-647186

UNLESS OTHERWISE SPECIFIED	SPECIFICATIONS
LINEAR DIMENSIONS ARE IN INCHES TOLERANCES: .XXXX = ±.0005 ANGLES= ±2° .XXX = ±.010 .XX = ±.03 .X = ±.1	MATERIAL SPEC. N/A -
DIM.& TOL. PER ASME Y14.5M; DRM PER MIL-DTL-31000; OTHER Amphenol Sds. PER 9-3800	PROCESS SPEC. N/A -
LEGENDS: =FLAG NOTE CALL OUT REFERENCE ONLY	

3	I	10-647163-001	10.3MM SURLOK BOTTOM HOUSING	
2	I	SEE CHART	10.3MM SURLOK METAL ASSEMBLY	
1	I	10-647163-002	10.3MM SURLOK TOP HOUSING	
POS	QTY	PART NUMBER	DESCRIPTION	NOTE
PARTS LIST				
APPROVALS		DATE	AMPHENOL CORPORATION 40-60 DELAWARE AVENUE SIDNEY, N.Y. 13838	
PREPARED BY DERIC LI		03-Aug-06		
ENGINEER IN CHARGE M. UPPLER				
DESIGN MANAGER J. SANDBURG				
DESIGN ACTIVITY GROUP C&I		10.3MM SURLOK RADSOK ASSEMBLY		
THIRD ANGLE PROJECTION				
		SIZE C	CAGE CODE 77820	DOCUMENT NO. 10-647186-( )X( )
		SCALE: 1.0	REF: 10-647185	REV. A
				SHEET 1 OF 1