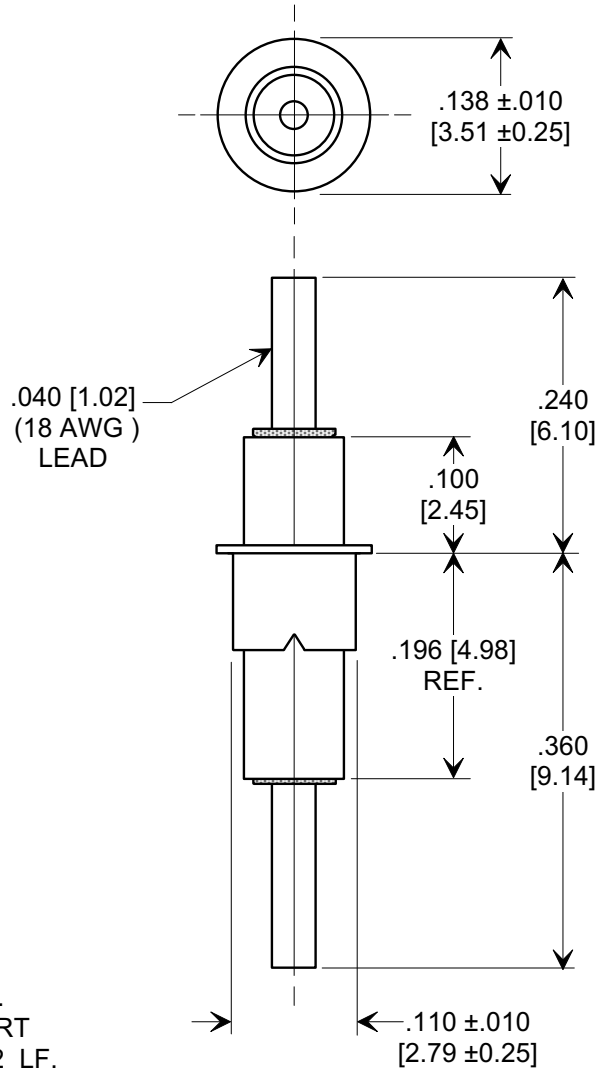
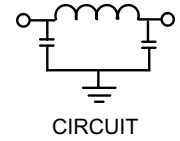
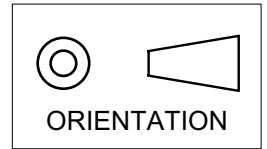


MARKETING SALES DRAWING
DIMENSIONS IN INCHES - DO NOT SCALE THIS DRAWING
DIMENSIONS IN METRIC - []

Electrical Testing
per Tusonix standard
test plans and Mil-Std-202
Test Methods.



NOTES:

- TUSONIX STANDARD PART
NUMBER: 4100-002.
TUSONIX RoHS COMPLIANT PART
NUMBER: 4100-002 LF.
CUSTOMER MUST SPECIFY STANDARD OR
RoHS PART NUMBER WHEN ORDERING.
- LEAD FINISH: STANDARD PART #: 60/40 SOLDER PLATED.
RoHS PART #: SILVER PLATED.
- EYELET FINISH: STANDARD PART #: 60/40 SOLDER PLATED.
RoHS PART #: SILVER PLATED.
- PART MARKING: STANDARD, NO MARKING.
RoHS PART: GREEN DOT ON INSULATION BAND,
TYPICAL LOCATION.

MIN. CAP. pF	WORKING VOLTAGE		CURRENT Idc.	I.R. MIN. @ 100 (VDC.)	DWV (VDC)	MINIMUM NO LOAD INSERTION LOSS (dB) AT 25°C PER MIL-STD-220			
	85°C	125°C				10 MHz	100 MHz	1 GHz	10 GHz
1500	350	200	15 A	10 G	700	5	25	60	60

X-2015 Rev-0	REVISION RECORD			--TOLERANCES-- Unless Otherwise Specified	Title	
	Original Release C.O. 1653	1	RND TO COMP FMT. S.M. 07-18-00		EYELET STYLE EMI FILTER	
	CURRENT UNIT "A" ADDED L.E. 08-20-85	2	20000717-5-06	DECIMAL $\pm .031$ [0.79]	Drawn	S.M. 07-13-00
	ADDED NOTES, I.R, DWV & CIRCUIT. S.M. 06-06-05	3	20050526-4-06	ANGLES \pm	Scale	6 X
				Approved		
				T.C. 07-13-00		
				TUSONIX TUCSON, ARIZONA	A	4100-002