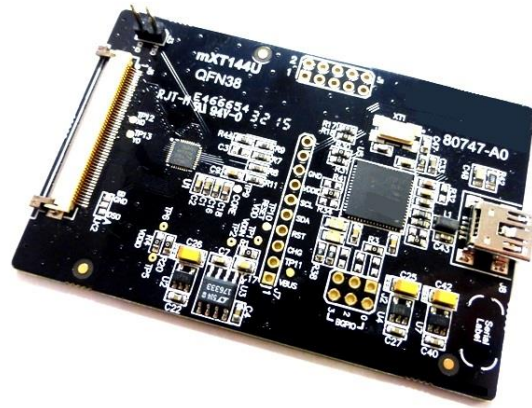


ATEVK-MXT144U-A Kit Contents

1x 12x12y Copper Sensor (75608)	
1x ATMXT144U PCB (80747)	
4x Self Adhesive Rubber Feet	
1x USB Memory Stick (Documentation, Software, Schematics)	
1x Flat Flex Connector 50W-P0.5mm	
1x USB Cable	
1x ATEVK-MXT144U-A Quickstart Guide	



ATEVK-MXT144U-A Evaluation Kit Quickstart Guide

Using the Evaluation Kit

This kit (ATEVK-MXT144U-A) is for the evaluation and development of Microchip maXTouch™ applications using the ATMXT144U Touchscreen Sensor IC.

In this example, the device can be connected through a flexible printed circuit (FPC) to the copper sensor (75608). A set of self-adhesive feet have been supplied with the kit to allow for the touchscreen assembly to be used on the bench.

SPI Debug Mode

If SPI Debug Mode is required for MXT144U PCB (Version -A0 only), change the wiring on the PCB to reflect the following configuration.

- J1 Pin1 to J7 Pin9
- J3 Pin1 to J7 Pin10
- For DBG_DAT, connect to LK2 Pad A

Evaluation Software

A PC application: maXTouch Studio Lite is included to facilitate evaluation of the product. The information sheet gives only a brief overview of the maXTouch Studio operation. The *Lite* version of the tool supplied on the USB memory stick allows viewing of messages and objects and loading of the configuration files. To tune and change objects, a full version of the tool is available for download. Please contact your local Microchip representative for details.

- Insert the supplied USB Memory Stick into the PC. Double click and install the software for maXTouch Studio.
- Connect the supplied USB cable to the ATMXT144U PCB assembly and to any available USB port.

NOTE: If this is the first time the tool has been run, then perform the following steps:

- In maXTouch Studio toolbar select the menu Server > Load Bridge Client
- Open the BridgeClients folder and select BridgeClientNet.exe
- Click the “Open” button – the Bridge Client will load.
- Select Server > Hide Bridge Client (do NOT close (red X) the Bridge Client window).

Object Explorer

Using the maXTouch Studio application via the Object Explorer allows for various operating parameters to be configured. The Object Explorer is also the means by which different configurations, such as touch keys or touchscreen format can be loaded into the ATMXT144U unit. The explorer only displays the objects present in the connected device. Before making changes to individual parameters, it is advisable to save the current default settings.

- This can be done from the Save Config option in the Configuration menu on the maXTouch Studio toolbar.
- To change a parameter, click on the object you wish to alter (e.g. Multiple Touch Touchscreen T100).
- After changing any parameters, click on the Write button of the active window to apply the new settings.

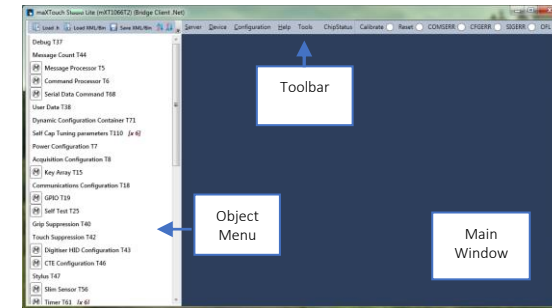
NOTE: Settings will revert to their defaults when you unplug and re-plug the USB cable unless you click on the Backup button in the Device menu on maXTouch Studio toolbar.

- To view touches graphically use Touch Reporter in the Tools menu in the toolbar.

Restoring Factory Configuration

If necessary, the unit may be set back to factory default settings. This may be of use if settings have been changed, and the unit is no longer functioning as intended.

- Run the maXTouch Studio application and select Configuration from the toolbar.
- Select Zero Config and then Load Config.
- From the Open dialog box, navigate to the *Default Configuration File* folder on the supplied USB memory stick and locate and load the .xcfg file.
- When the file is loaded, click on the Device menu on the maXTouch Studio.
- Select Backup then select Reset. The default factory settings are now set.



Additional Information

More information about this product can be found within the Datasheet and Protocol Guide. These and further information about maXTouch Studio are available from your Microchip representative.