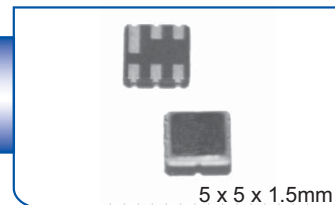


SMD 390.0 MHz SAW FILTER

AFS390E

APPLICATION: Radio



5 x 5 x 1.5mm

STANDARD SPECIFICATIONS:

CHARACTERISTICS	UNIT	MIN.	TYP.	MAX.
Center Frequency Fc	MHz	389.920	390.000	390.080
Bandwidth	kHz	500	-	800
Insertion Loss @ Passband	dB	-	1.7	3.0
Ripple @ Passband	dB	-	-	-
Relative Attenuation				
- 21.4Mhz	dB	40	50	-
- 10.7MHz	dB	15	40	-
F where 10M < F < Fc -21.4M Fc+21.4<F<1000M	dB	30	80	-
DC Voltage	V	10		
AC Voltage	V	10V(50Hz/60Hz)		
Source Power	dBm	0		
Operating Temperature	°C	-35°C to +50°C		
Storage Temperature	°C	- 35°C to +85°C		
Frequency aging	ppm/yr		< ±10	
External impedance	nH		43	
Series inductance L				
Shunt capacitance C	pF		5.6	

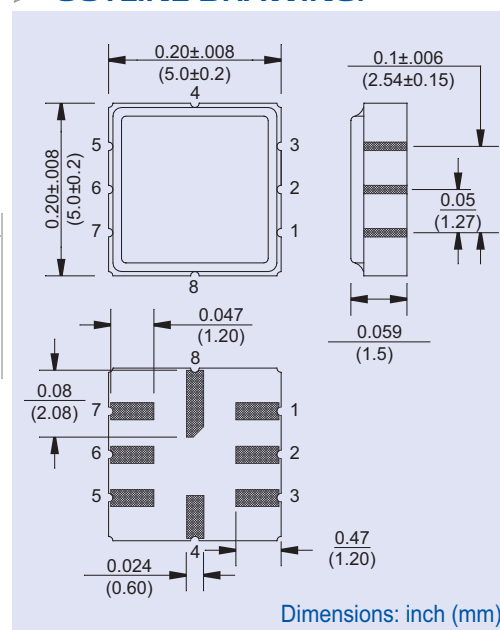
Electrostatic Sensitive Device. Handle with precaution.

MARKING:

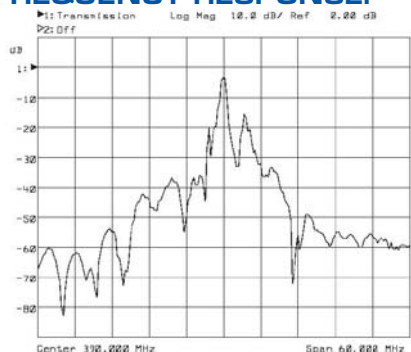
- 390.00 (390 Frequency in MHz)
- AF ZYX (ZY: Date code Z for month from A to L; Y for year, i.e. 4 for 2004; X: Traceability code)

PIN NO.	CONNECTIONS
2	Input
5	Output
All Others	Ground

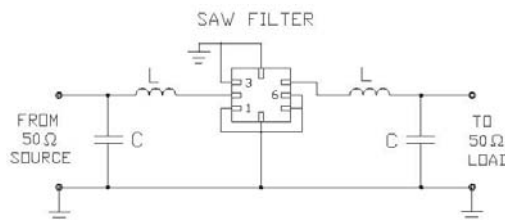
OUTLINE DRAWING:



FREQUENCY RESPONSE:



TEST CIRCUIT:



Please refer to ABRACON's Chip Inductor Series AISC-0603 for test inductors.