



TDS SERIES

GENERAL 3-PHASE 3-WIRE FILTERS

COMPONENTS

PART NO.	Leakage current max mA	L (mH)	L1 (mH)	Cx (uF)	Cy (nF)	R (KΩ)
•08TDS4W4 •24TDS4W4	6.5	4.2	1.5	1	15	470
		1	0.5			
PART NO.	Leakage current max mA	L (mH)	ΣCx (uF)	ΣCy (uF)	R1 (MΩ)	R2 (MΩ)
08TDS8	14.5	7.6	1.6	0.17	2	-
16TDS8		5.2	3.4		1.5	1.1
36TDS8	160	1.3	4.4	1.8		

• UL, VDE approved

MINIMUM INSERTION LOSS IN dB

COMMON MODE (L-G) IN 50 OHM SYSTEM							
TYPE	CURRENT RATING	FREQUENCY - MHz					
		.15	.50	1.0	5.0	10	30
08TDS4W4	8A	70	65	60	50	40	30
24TDS4W4	24A	40	65	70	70	60	35
08TDS8	8A	50	65	65	55	50	50
16TDS8	16A	45	70	65	55	50	50
36TDS8	36A	60	70	65	55	50	55
DIFFERENTIAL MODE (L-L) IN 50 OHM SYSTEM							
08TDS4W4	8A	35	65	70	55	50	35
24TDS4W4	24A	15	60	65	65	60	40
08TDS8	8A	50	65	60	55	50	50
16TDS8	16A	50	70	65	55	55	50
36TDS8	36A	50	70	65	55	50	45

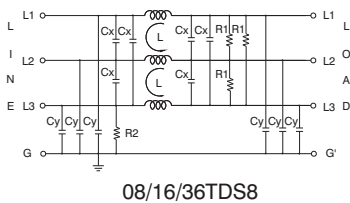
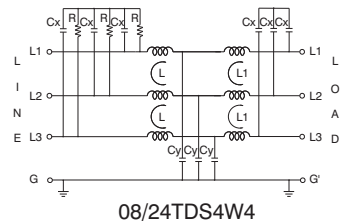
SERIES DIMENSIONS

	08TDS4W4	24TDS4W4	08TDS8	16TDS8	36TDS8
A	145	180		200	
B	135		115		
C	75	115		150	
D	55	100		136	
E	45	60		65	
F	16		18		
H	-		6.4		
I		85		120	
J	M4X0.7		M6X1.0		
K	15			20	
L	300			-	
M	6			-	
N	7X5.3			-	
T			0.8		
W	AWG18	AWG16		-	

INTRODUCTIONS

1. Applications: Electric equipment, UPS, machine tool, copy machine, automation equipment, robot, AC motor drive
2. Voltage rating: 480VAC
3. Operating frequency: 50/60Hz

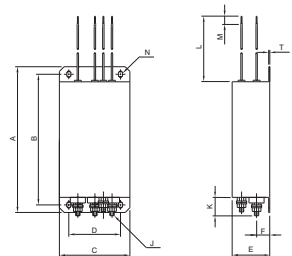
ELECTRICAL SCHEMATIC



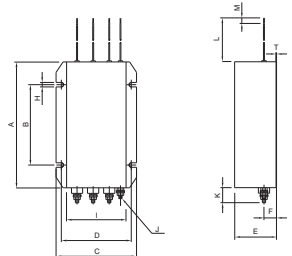
MECHANICAL CONSTRUCTION



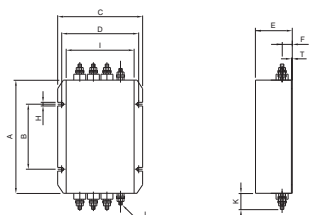
08TDS4W4



24TDS4W4



08/16/36TDS8



THREE-PHASE FILTERS