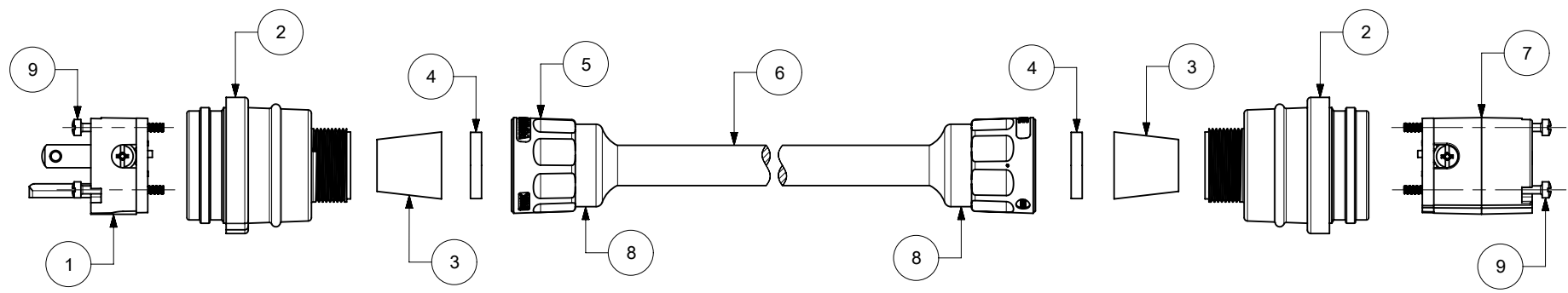
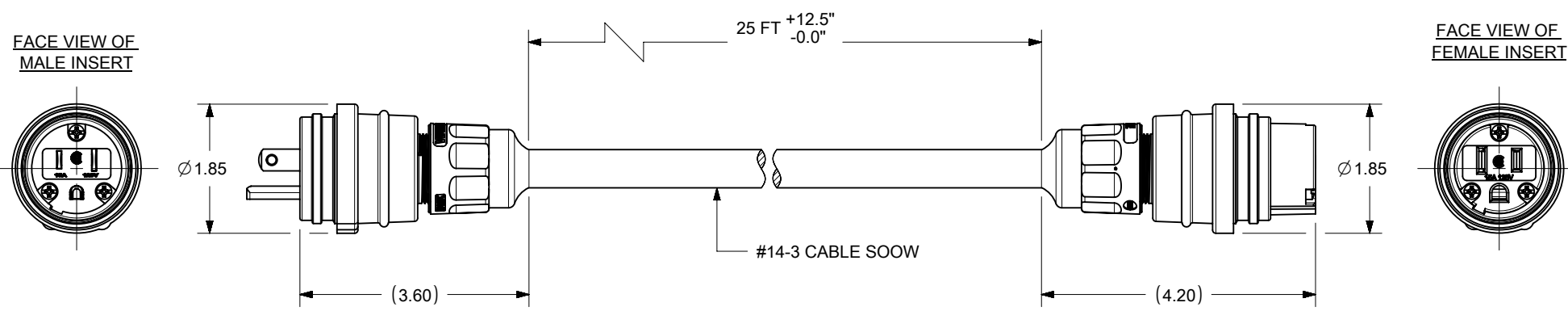


6 5 4 3 2 1

D



C



B

ITEM NO.	DESCRIPTION	MATERIAL	QTY.
1	MALE INSERT ASSY.	NYLON, POLYCARBONATE, BRASS PLATING - NICKEL OR ZINC	1
2	WATERTITE - MALE HUSK	SILICONE	2
3	GROMMET	RUBBER	2
4	FRICITION RING	NYLON	2
5	COMPRESSION NUT YELLOW	NYLON	2
6	YELL SOOWCORD	COPPER WIRE	1
7	FEMALE INSERT ASSY.	NYLON, POLYCARBONATE, BRASS PLATING - NICKEL OR ZINC	1
8	CABLE GLOVE	SILICONE	2
9	RETAINING SCREW	STAINLESS STEEL	6

PENDING APPROVAL

MATERIAL NO.	ENGINEERING NO.
1301430075	09389

A

SYMBOLS				THIS DRAWING CONTAINS INFORMATION THAT IS PROPRIETARY TO MOLEX ELECTRONIC TECHNOLOGIES, LLC AND SHOULD NOT BE USED WITHOUT WRITTEN PERMISSION			
∇ = 0	INCH	SCALE	NTS	CURRENT REV DESC: MIGRATION TO ECTR/NX			
E = 0	GENERAL TOLERANCES (UNLESS SPECIFIED)			EC NO: 622757			
F = 0		MM	INCH	DRWN: PPURSUTANDEL 2019/11/06			
S = 0	4 PLACES	±	±	CHK'D: DNGUYEN62 2019/11/18			
▲ = 0	3 PLACES	±	± 0.005	APPR:			
▼ = 0	2 PLACES	±	± 0.01	INITIAL REVISION:			
C = 0	1 PLACE	±	± 0.02	DRWN: TVICKERS 2007/11/05			
⊠ = 0	0 PLACES	±	±	APPR: HKNEELAND 2007/11/05			
■ = 0	ANGULAR TOL ± °			THIRD ANGLE PROJECTION			
∇ = 0	DRAFT WHERE APPLICABLE MUST REMAIN WITHIN DIMENSIONS			DRAWING SERIES			
				MATERIAL NUMBER		CUSTOMER	
				SEE CHART		GENERAL MARKET	
				A-SIZE 130143		1 OF 1	

molex

14W47 W/25' CORD & 15WW47MB

PRODUCT CUSTOMER DRAWING

DOCUMENT NUMBER	DOC TYPE	DOC PART	REVISION
SD-130143-003	PSD	001	B1

DOCUMENT STATUS	RQ	RELEASE DATE
-----------------	----	--------------

6 5 4 3 2 1

FORMAT: Eng\lega-master-ib-prod-A
REVISION: D
DATE: 2018/01/18