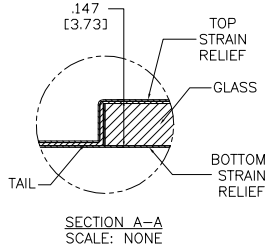
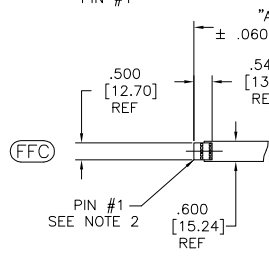
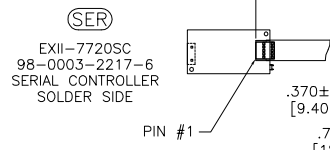
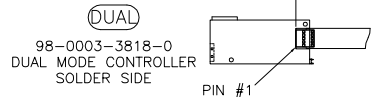
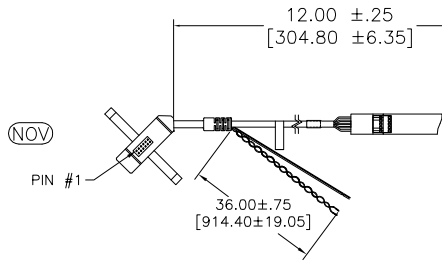
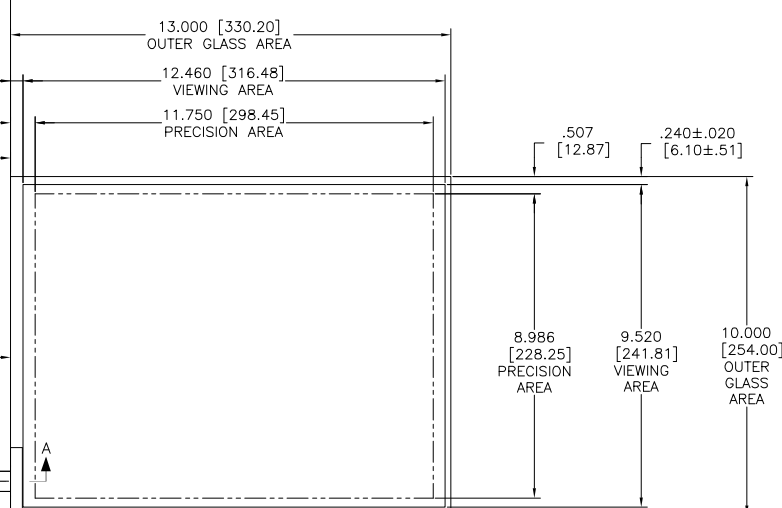


OGA DIAGONAL: 16.40 [416.59]  
 VA DIAGONAL: 15.68 [398.29]  
 PA DIAGONAL: 14.79 [375.72]



TOP LEVEL NUMBER	US 98 NUMBER	TYPE	DIM "A" (TOTAL GLASS TO CONNECTOR)	A/G FINISH	PROD SPEC
17-8031-203	98-0003-2511-2	FFC	4.27" [108.46]	AG500	23655
17-8031-204	98-0003-2513-8	FFC	6.00" [152.40]	AG500	23655
17-8031-205	98-0003-2514-6	FFC	8.00" [203.20]	AG500	23655
17-8031-206	98-0003-2515-3	NOV	SEE DWG	AG500	23655
17-8031-221	98-0003-2521-1	SER	4.27" [108.46]	AG500	23655
17-8031-223	98-0003-2522-9	SER	6.00" [152.40]	AG500	23655
17-8031-227	98-0003-2525-2	SER	8.00" [203.20]	AG500	23655
17-8031-218	98-0003-2519-5	USB R	4.27" [108.46]	AG500	23655
17-8031-226	98-0003-2919-7	USB R	8.00" [203.20]	AG500	23655
17-8031-230	98-0003-2921-3	HID M	8.00" [203.20]	AG500	23655
N/A	98-0003-3972-5	DUAL	8.00" [203.20]	AG500	23655
N/A	98-1100-0093-6	FFC	8.00" [203.20]	WC100	34523
N/A	98-1100-0094-4	USB R	8.00" [203.20]	WC100	34523



- NOTES:
- WEIGHT OF GLASS IN GRAMS: 639 ±10%
  - NICOMATIC HOUSING P/N: OL05  
 NICOMATIC RECEPTACLES (PINS) MATTE TIN PLATED P/N: 14106-12  
 HOUSING ORIENTED WITH LATCH DOWN

PINOUT	
1	LR
2	LL
3	SHLD
4	UL
5	UR

UNITS	INCHES [MM]
TOLERANCES UNLESS OTHERWISE SPECIFIED	
.X	±
.XX	±.03 [.76]
.XXX	±.015 [.38]
ANGLES	±1°
THIRD ANGLE PROJECTION	
DO NOT SCALE DRAWING	
SCALE	1 = 1

**3M** 3M TOUCH SYSTEMS  
 METHUEN, MA  
 USA

© COPYRIGHT 2005  
 THIS DOCUMENT IS COPYRIGHTED PROPERTY OF THE  
 3M COMPANY AND MAY NOT BE REPRODUCED  
 WITHOUT 3M WRITTEN PERMISSION OR USED OR  
 DISCLOSED FOR OTHER THAN 3M AUTHORIZED  
 PURPOSES.

DRAWN: CROWLEY 9/05

L	REVISED PER CO 036099	2/13	SB
REV	CHANGE NOTICE	DATE	DRW
TITLE			
MARKETING DRAWING			
SCT32NN 15.68"			
CAD FORMAT	AUTOCAD	SHEET	1 OF 1
SIZE	C	DOCUMENT NO.	TSD-28138
REV			L