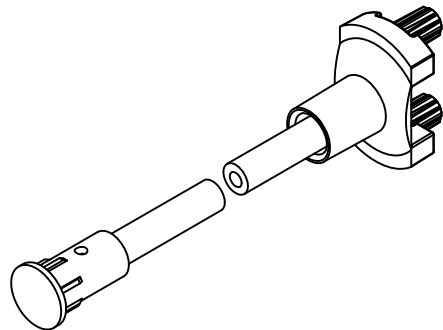
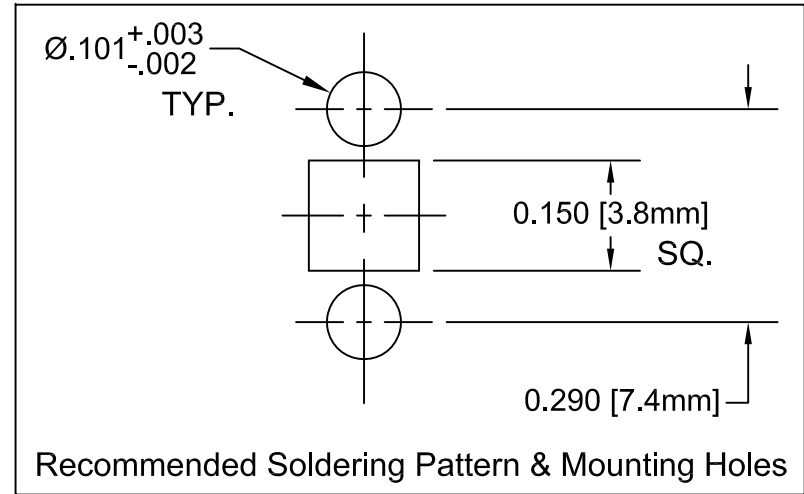
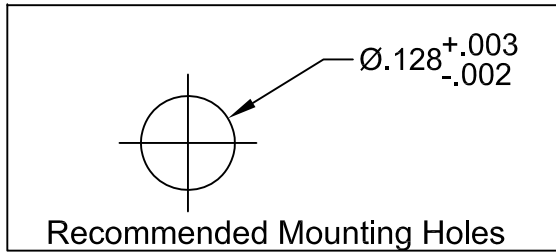


| ITEM | Q'TY | PART NUMBER | PART DESCRIPTION |
|------|------|-------------|--|
| 1 | 1 | SMFLP | Adapter, Surface Mount Flexible Light Pipe |
| 2 | 1 | LC-XX.X | Lens Cap / FLPS1022-X.XXX Assembly. (X.XXX, Cut Length in Inches) |

| REV. | DESCRIPTION | DATE | APPROVED |
|------|------------------------------|----------|----------|
| A | Engineering Release. | 06/08/04 | M. C. |
| B | L Dimension Update. | 10/25/05 | M. C. |
| C | L Dimension Update. | 01/06/06 | M. C. |
| D | Added Shipping Note | 04/17/06 | M. C. |
| E | Updated FLPC Hidden View | 08/27/08 | M. C. |
| F | Updated Fiber To FLPS In BOM | 11/12/12 | T. Y. |
| G | Updated Notes. | 05/17/13 | T. Y. |



| " L " * | Tolerance |
|------------------|-----------|
| 1.0" ~ 16.0" | ±0.050" |
| 16.1" ~ 40.0" | ±0.15" |
| 40.1" ~ 80.0" | ±0.30" |
| 80.1" ~ 3,940.0" | ±0.5% |

* Available in 0.1" increments only.

NOTES:

- SMFLP ADAPTER SHIPPED NON-ASSEMBLED
- MINIMUM 0.210" FIBER INSERTION INTO SMFLP

| STANDARD TOLERANCE (UNLESS OTHERWISE SPECIFIED) | | BIVAR® | |
|--|----------------|---|----------------|
| DECIMALS | ANGULAR | 4 THOMAS, IRVINE, CA. 92618 | |
| .X ±.1 | X° ± 1° | TEL: (949) 951-8808 FAX: (949) 951-3974 | |
| .XX ±.02 | | TITLE: FLEXIBLE LIGHT-PIPE SMD LED ADAPTER ASSY | |
| .XXX ±.010 | | PART NO: SMFLPX.X | |
| DESIGNED: David Green | DATE: 06/08/04 | REVISION: G | |
| CHECKED: T. Yin | DATE: 06/08/04 | CAGE CODE : 32559 | SHEET # 1 OF 1 |
| CAD GENERATED DOCUMENT, DO NOT MEASURE DRAWING. | | | |