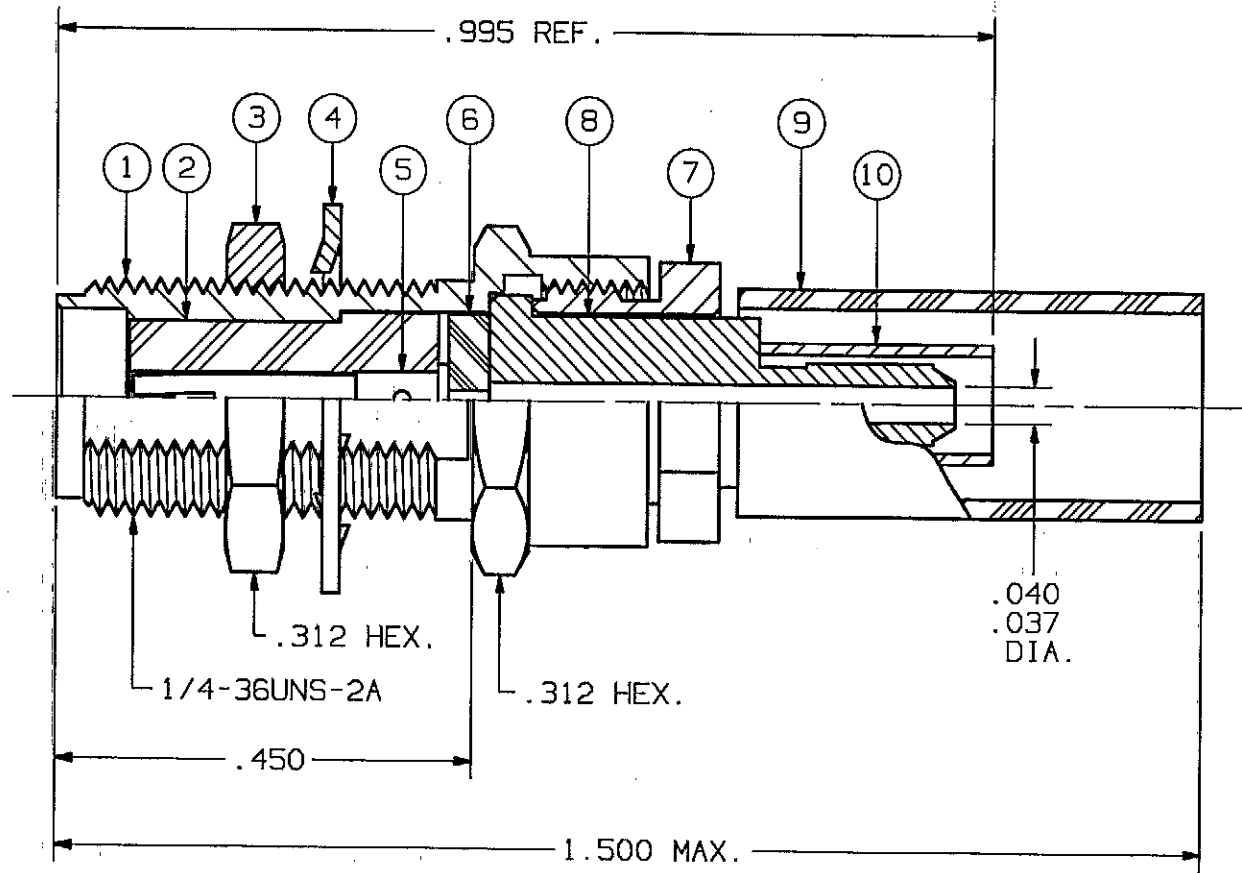
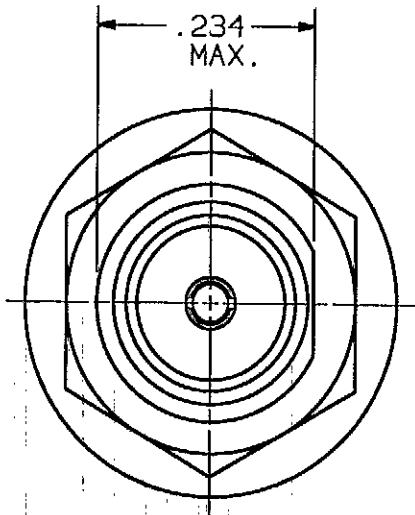


ENG. FILE COPY



- NOTES:
- MATING END DIMENSIONS PER MD-107.
 - SHIP ITEMS 3,4,5,6,7,8,9 & 10 LOOSE WITH CONNECTOR.

| | | | | | | | | | |
|------|----------------|--------|-------|--|---|-------|--|--|--|
| SYM. | DESCRIPTION | DATE | APPR. | UNLESS OTHERWISE SPECIFIED: 1) ALL DIMENSIONS ARE AFTER PLATING. 2) BREAK CORNERS & EDGES .005 R. MAX. 3) CHAM. 1st & LAST THDS. 4) SURFACE ROUGHNESS 63 / MIL-STD-10. 5) DIAS. ON COMMON CENTERS TO BE CONCENTRIC WITHIN .005 T.I.R. 6) REMOVE ALL BURRS. | DIMENSIONS ARE IN INCHES TOLERANCES: DECIMALS FRACTIONAL ANGULAR .X ±.030 X° ±1'0" .XX ±.015 ±1/64 X'X' ±15' .XXX ±.005 | | | Solltron Vector Microwave 3301 ELECTRONICS WAY WEST PALM BEACH, FL. 33407 | |
| - | REL. NRN 24631 | 8/5/98 | slw | | MATERIAL: SEE BOM | | | TITLE: SMA BULKHEAD JACK FOR RG 178B & 196A/U CABLES | |
| | | | | | FINISH: SEE BOM AREA: N/A | | | DWG. NO. SHT. 2 OF 2 SF2943-6044 | |
| | | | | | DRAWN: ALJ 8/05/98 | | | | |
| | | | | | CHECKED: slw 8/5/98 | | | | |
| | | | | | APPROVED: slw 8/5/98 | | | | |
| | | | | SIZE | CAGE NO. | SCALE | | | |
| | | | | A | 95077 | 5X | | | |

SF2943-6044

| REV | DESCRIPTION | DATE | APPROVAL |
|-----|----------------|------|------------|
| - | REL. NRN 24631 | 8/98 | <i>slw</i> |
| | | | |
| | | | |

ENG. FILE COPY

MARK MIN. PACKAGE SF2943-6044 AND
(DATE CODE) PER 400-05-004, TYPE 8

| ITEM NO. | PART NUMBER | QTY. | DESCRIPTION | TROY OZ. | PLATING | LEVEL | | | | |
|----------|-------------|------|--------------------|----------|---------|-------|---|---|---|---|
| | | | | | 400-01- | 0 | 1 | 2 | 3 | 4 |
| 1 | 012-29-443 | 1 | BODY | | 020 | | X | | | |
| 2 | 244-29-343 | 1 | INSULATOR | | - | | X | | | |
| 3 | 029-29-005 | 1 | HEX NUT | | 020 | | X | | | |
| 4 | 037-81-035 | 1 | LOCK WASHER | | 020 | | X | | | |
| 5 | 033-29-448 | 1 | CONTACT | | 143 | | X | | | |
| 6 | 244-29-342 | 1 | INSULATOR | | - | | X | | | |
| 7 | 029-29-103 | 1 | CLAMP NUT | | 125 | | X | | | |
| 8 | 025-29-101 | 1 | INNER CRIMP SLEEVE | | 125 | | X | | | |
| 9 | 220-29-021 | 5/8" | SHRINK TUBING | | - | | X | | | |
| 10 | 040-20-001 | 1 | CRIMP RING | | 125 | | X | | | |
| 11 | 300-80-042 | A/R | CABLE ASSY. INSTR. | | - | X | | | | |
| | | | | | | | | | | |
| | | | | | | | | | | |
| | | | | | | | | | | |
| | | | | | | | | | | |
| | | | | | | | | | | |
| | | | | | | | | | | |
| | | | | | | | | | | |
| | | | | | | | | | | |
| | | | | | | | | | | |
| | | | | | | | | | | |
| | | | | | | | | | | |

| | | | | | |
|----------|------------|------|------|---------------|---------------------------|
| DRAWN | ALJ | DATE | 8/98 | DESIGNED FOR: | SOLITRON VECTOR MICROWAVE |
| CHECKED | <i>slw</i> | DATE | 8/98 | CUSTOMER P/N: | |
| APPROVED | <i>slw</i> | DATE | 8/98 | REVISION: | |

PARTS LIST

SHEET 1 OF 2