

SHELL  
MATERIAL: ALUMINUM ALLOY  
PER ASTM-B-85  
FINISH: CHROMATE COATED PER  
MIL-C-5541, CLAS 1A

DATE CODE AND PART  
NUMBER INK STAMPED

DUST COVER  
INSTALLED FOR SHIPMENT  
MAT'L: CONDUCTIVE  
THERMOPLASTIC

INSULATOR, SOCKET  
MAT'L: PPS PER  
MIL-M-24519

INSERT RETENTION PLATE (4 REQ'D)  
MAT'L: ALUMINUM ALLOY  
FINISH: CHROMATE (ALODINE 1200)  
PER MIL-C-5541 CLASS 1A

RETAINER  
MAT'L: ALUMINUM ALLOY  
FINISH: CHROMATE COATED

#4-40 UNC PAN  
HEAD SCREWS (10 PLC)

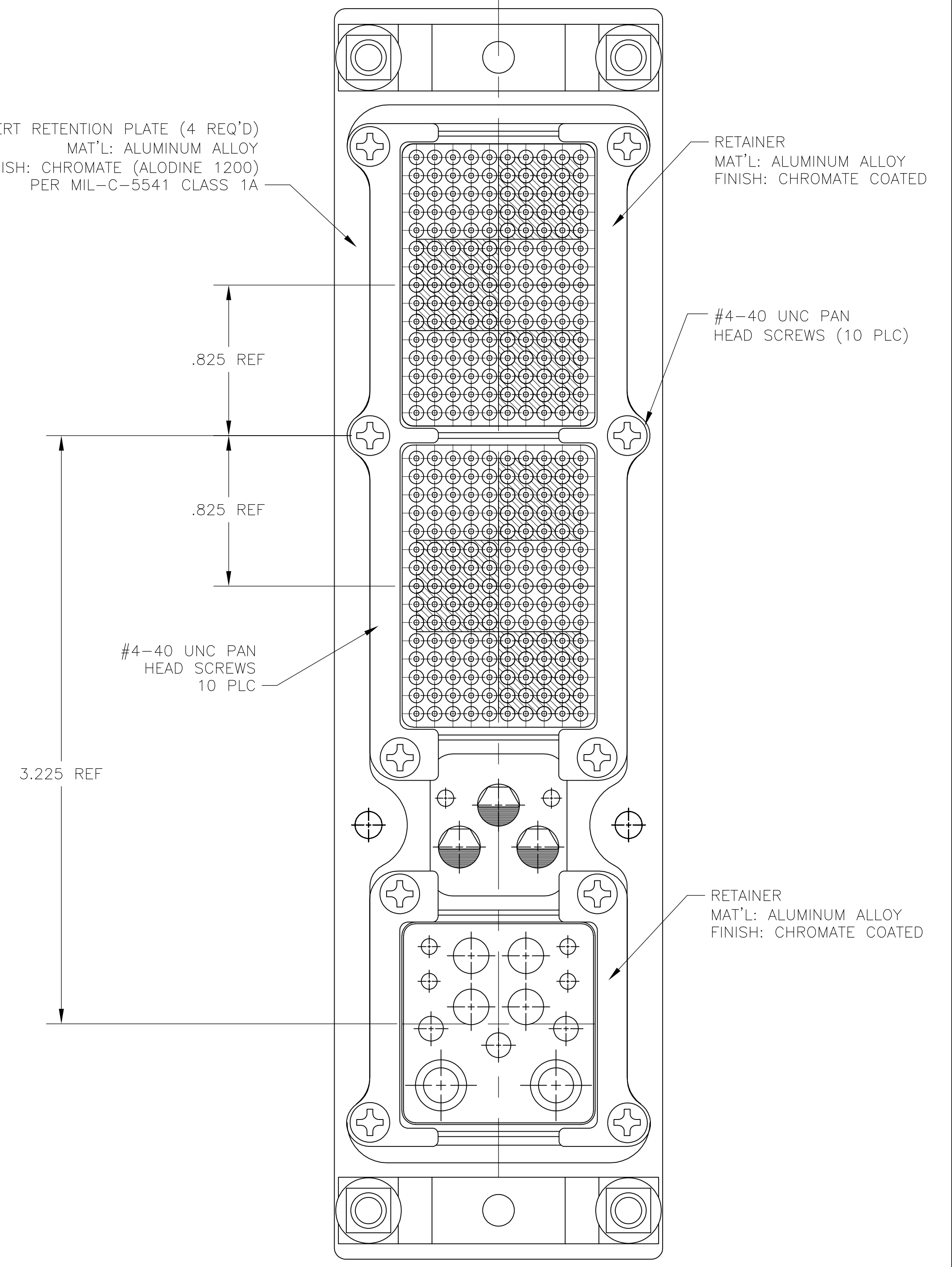
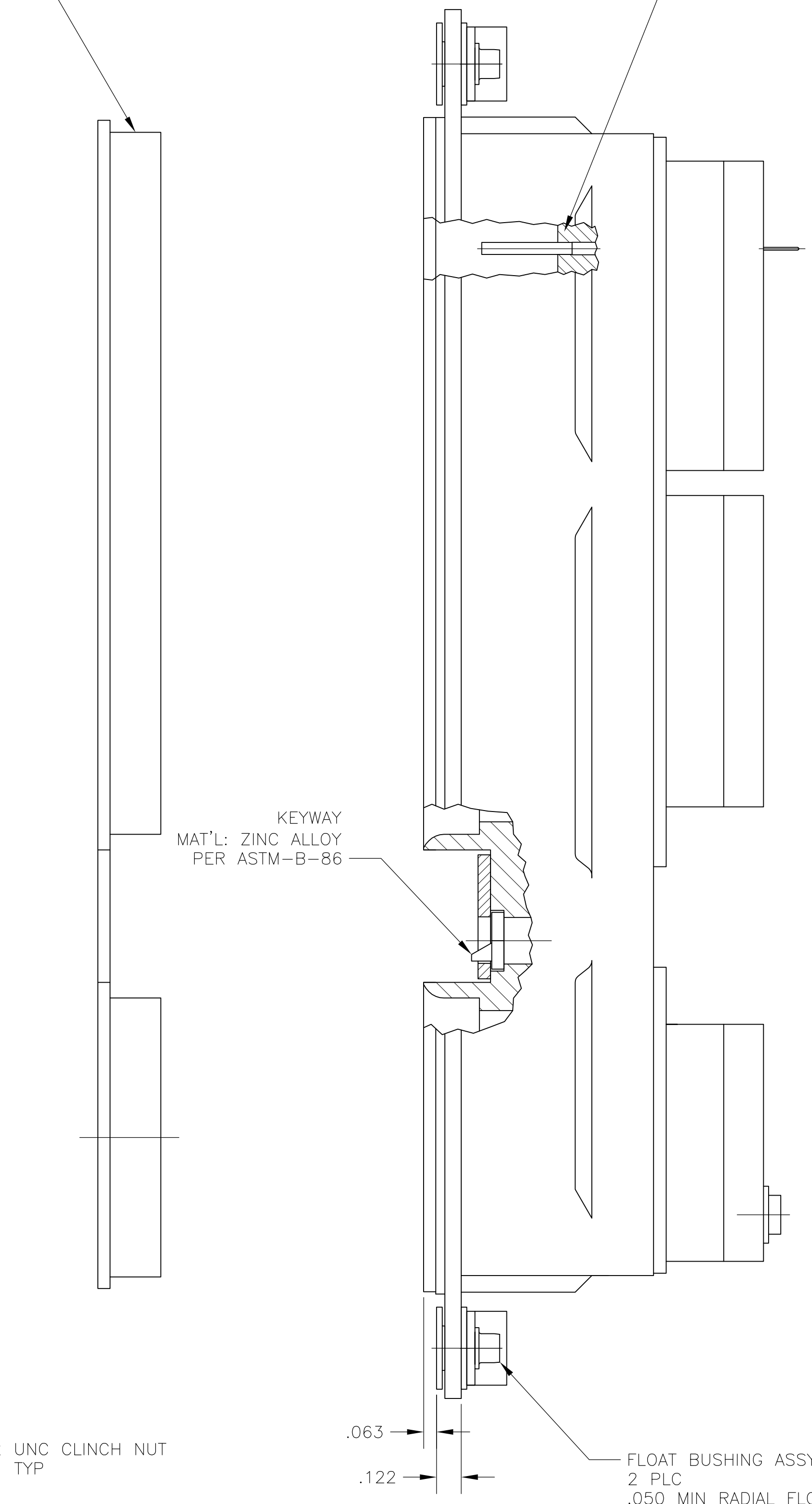
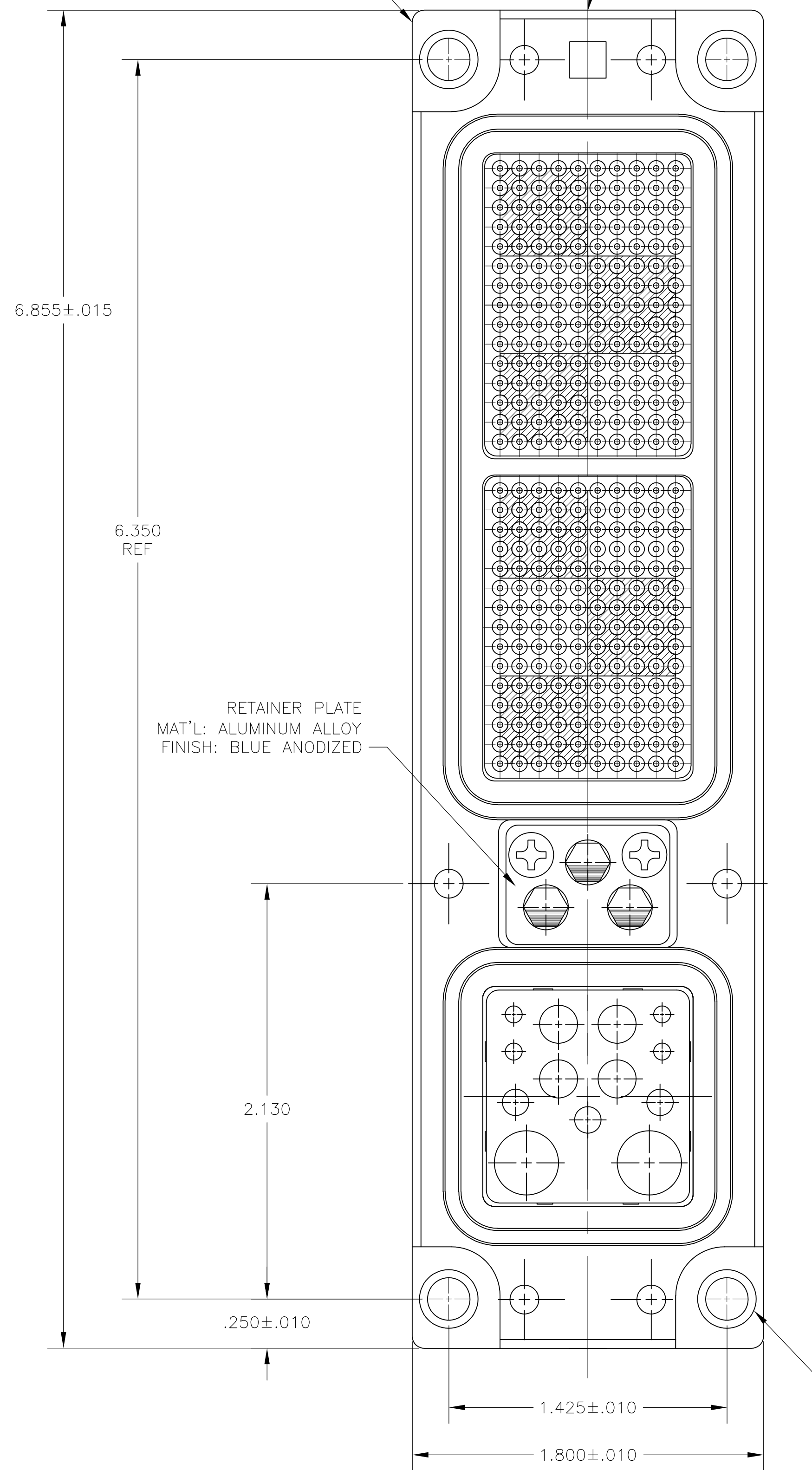
RETAINER  
MAT'L: ALUMINUM ALLOY  
FINISH: CHROMATE COATED

KEYWAY  
MAT'L: ZINC ALLOY  
PER ASTM-B-86

#4-40 UNC PAN  
HEAD SCREWS  
10 PLC

FLOAT BUSHING ASSY  
2 PLC  
.050 MIN RADIAL FLOAT

#6-32 UNC CLINCH NUT  
TYP



THIS DRAWING IS A CONTROLLED DOCUMENT.

DIMENSIONS:	TOLERANCES UNLESS OTHERWISE SPECIFIED:
INCHES	
0 PLC	± .005
1 PLC	± .005
2 PLC	± .005
3 PLC	± .005
4 PLC	± .005
ANGLES	± .005

APPROVED:	DATE:	BY:	DATE:
C. THOMAS	17FEB06	V. FURLER	17FEB06
PRODUCT SPEC		NAME	
APPLICATION SPEC		CONNECTOR ASSEMBLY, ARINC 600, RECEPTACLE, SIZE 2, (UNSEALED)	
SIZE	CAGE CODE	DRAWING NO	RESTRICTED TO
A1	00779	211700	
CUSTOMER DRAWING		SCALE	SHEET
		1:1	1 OF 1