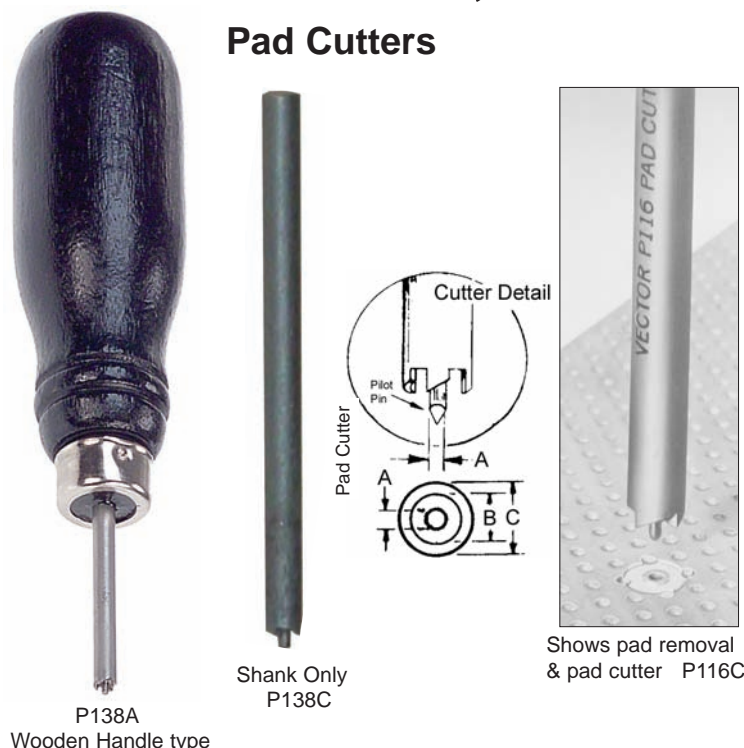


# Pad Cutters, Insertion Tools

## Pad Cutters



Vector Pad Cutters provide an effective method for creating isolated solder pads around holes in copper clad boards. Pilot pin enters hole and rotates, creating a clearance area around the solder pad. Available for boards with .062" or .042" diameter holes. Also available without handles for use with manual or power drills.

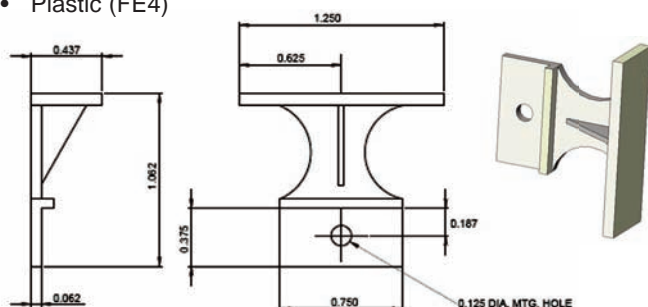
| Part No. | Holder Type  | A     | B     | C     | Shank | Use with Vectorbord®     |
|----------|--------------|-------|-------|-------|-------|--------------------------|
| P116C    | Handle/Shank | .055" | .188" | .250" | .250" | Pattern G, H .062" holes |
| P138A    | Handle/Shank | .040" | .086" | .125" | .125" | Pattern P, .042" holes   |
| P138C    | Shank Only   | .040" | .086" | .125" | .125" | Pattern P, .042" holes   |

## HA14

### Pull Type Ejector Handle

- Extraction/insertion handles
- Mounts on front edge of Plugbord™ with single screw or roll-pin
- Plastic (FE4)

| Part No. | Package Quantity |
|----------|------------------|
| HA14     | 4                |
| HA14/C   | 100              |



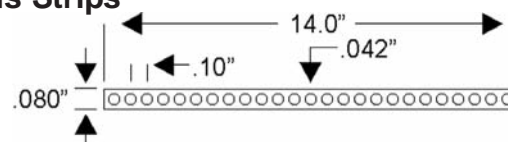
## Hand Insertion Tools for Push-In Terminals

| Part No | Terminal P/N           | Holder Type                        |
|---------|------------------------|------------------------------------|
| A13     | T44                    | Shank with removable rubber handle |
| A13-1   | T68                    | Shank with removable rubber handle |
| P91A    | T28                    | Wooden Handle                      |
| P156    | T49                    | Wooden Handle                      |
| P133A   | T46 series & K24 - K31 | Shank with removable rubber handle |
| P134    | K36                    | Wooden Handle                      |
| P149A   | T42-1                  | Wooden Handle                      |
| P149    | T42-1                  | Shank with removable rubber handle |



## T107

### Bus Strips



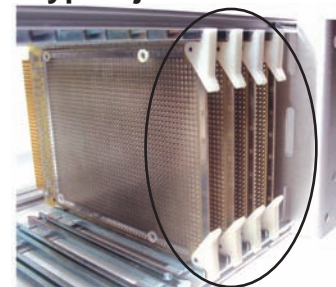
- Flat cold-drawn flat copper wire, 0.017" thick (+/-0.003")
- 0.080"W with 0.042" diameter holes on 0.100" centers
- Hot 100% Tin dipped, fully RoHS compliant
- Compatible with most Vectorbord® hole patterns



| Part No. | Pkg Qty |
|----------|---------|
| T107/C   | 100     |
| T107/10  | 10      |

## HA9

### Rotation Type Ejector Handle



Dimensional information for HA9 is on Page 44

|  | Part No. | Pkg Qty |
|--|----------|---------|
| Card ejector, corner mounting          | HA9/4    | 4       |
| Supports up to 40 lbs extraction force | HA9/C    | 100     |
| White nylon, (hardware included)       |          |         |