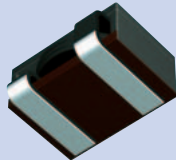


EPCOS Sample Kit 2017

ERU Chokes

ERU 13 Series – B82559A*A013

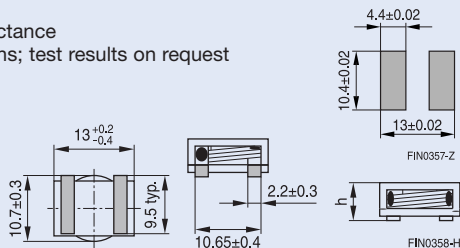


ERU Chokes – ERU 13 (SMD)

L (inductance) ±10%	μH	0.5	0.95	1.1	1.4
$I_{sat, typ}$	A	30	25	20	22
DCR_{typ}	mΩ	0.78	1.12	1.72	1.5
Height h_{max}	mm	4.95	5.95	4.95	6.00
Ordering code	B82559	A0501A013	A0951A013	A0112A013	A0142A013
L (inductance) ±10%	μH	2.15	2.4	3.0	3.9
$I_{sat, typ}$	A	15	16.5	13	12
DCR_{typ}	mΩ	3.2	2.76	4.0	4.8
Height h_{max}	mm	4.95	5.95	4.95	5.95
Ordering code	B82559	A0222A013	A0242A013	A0302A013	A0392A013

- All values measured at 20 °C ambient temperature
- $I_{sat, typ}$ is current that will result in 20% reduction of nominal inductance
- Temperature response needs to be verified in specific applications; test results on request
- Operating temperature: -40 to +130 °C
- Flat wire winding: extremely low-resistance coil
- Self-leded construction features under body termination for smallest possible footprint
- Special values and sizes on request
- Blister tape packaging:

Height of component h_{max}	Packing unit per reel
4.95 mm	750 pcs.
5.95/6.00 mm	500 pcs.



Mechanical dimensions and suggested pad layout (reference only)

Mouser Electronics

Authorized Distributor

Click to View Pricing, Inventory, Delivery & Lifecycle Information:

[TDK:](#)

[B82559X1](#)