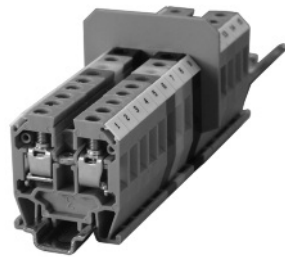


Mini Feed-Through 15mm

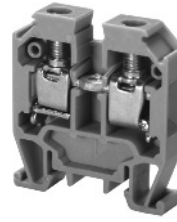
For wire-to-wire connecting in control, automation, instrumentation and power distribution applications.

Altech "miniature" terminal blocks offer tremendous space advantage as demanded by certain wiring configurations.



CMT4

CGMT4



Terminal Width	6 mm			6 mm		
Height x Length	29 x 27 mm			28.5 x 27 mm		
Stripping Length	9 mm			9 mm		
Insulation Material	Polyamide 6.6			Polyamide 6.6		
Type of Connection	2 screw clamps & 1 tapped hole for cross connection			2 screw clamps		
Approvals						
Wire Range	22-10 AWG	0.5-4 sq.mm	22-10 AWG	22-10 AWG	0.5-4 sq.mm	22-10 AWG
Voltage Rating	300 V	400 V	300 V			
Current Rating	35 A	32 A	35 A		32A	
Torque	6 lb-in	0.5 Nm	7 lb-in	7 lb-in	0.5 Nm	7 lb-in

Other Approvals									AEx eII Ex eII
-----------------	--	--	--	--	--	--	--	--	-------------------

Cat. No.	Std. Pk.	Cat. No.	Std. Pk.
----------	----------	----------	----------

Terminal Block	CMT4	100	CGMT4	50
-----------------------	-------------	-----	--------------	----

End Plate	EPCMT4	50		
-----------	--------	----	--	--

Isolation Partition	PPCMT4	50		
---------------------	--------	----	--	--

DIN Rail for ordering information refer to page 72				
--	--	--	--	--

End Stop for ordering information refer to page 74	CA602	100		
--	-------	-----	--	--

Internal Jumper		2 pole	CA727/2	100
		3 pole	CA727/3	100
		4 pole	CA727/4	100
		10 pole	CA727/10	10

Insulated Internal Jumper		2 pole	CA747/2	100
		3 pole	CA747/3	100
		4 pole	CA747/4	100
		10 pole	CA747/10	10

Current Bars		2 pole	CA703/1	100
		3 pole	CA704/1	100
		4 pole	CA705/1	100
		10 pole	CA732/10	100
		10 pole (breakable)	CA732/10-A	100
		100 pole	CA732/100	10

Shorting Sleeve & Screw	CA607/S/Q	100		
-------------------------	-----------	-----	--	--

External Jumper		2 pole	CA714/2	100
		3 pole	CA714/3	100
		4 pole	CA714/4	100
		10 pole	CA714/10	20

Marking Tags (MT Type) (MT Type on Lever)	MT2	100	MT2	100
--	-----	-----	-----	-----

COLOR BLOCKS
(other than grey standard)

When ordering please add color suffix to Cat. No.

Example: CTS2.5U-N/R

Color	Ordering Suffix	
Red	R	
Blue	BU	
Black	BL	
Orange	O	
Green	G	
Yellow	Y	
White	W	
Beige	BG	
Dark Brown	DB	