

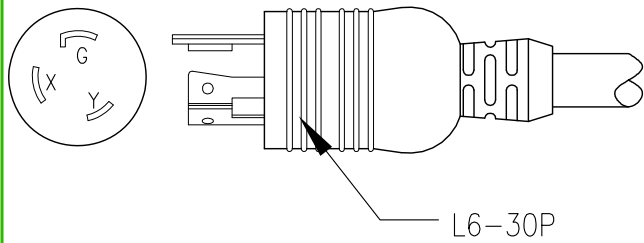
- NOTES:**
1. INSTALLATION SHALL COMPLY WITH ALL APPLICABLE NATIONAL, STATE AND LOCAL ELECTRICAL REGULATIONS.
  2. REFER TO PRODUCT DOCUMENTATION FOR ADDITIONAL DETAILS PRIOR TO INSTALLATION AND SITE PREPARATION WORK.
  3. ALL DIMENSIONS ARE IN INCHES [MILLIMETERS].
  4. NET WEIGHT OF UNIT IS 13.90 lb [6.32kg].
  - △ 5. LENGTH OF POWER CORD IS 144 inches [3658mm].

THIS DRAWING AND SPECIFICATIONS HEREIN ARE THE PROPERTY OF SCHNEIDER ELECTRIC AND SHALL NOT BE COPIED, REPRODUCED OR USED IN WHOLE OR IN PART, AS THE BASIS FOR THE MANUFACTURE OR SALE OF ITEMS WITHOUT WRITTEN PERMISSION FROM SCHNEIDER ELECTRIC. THIS DRAWING IS BASED UPON LATEST AVAILABLE INFORMATION AND IS SUBJECT TO CHANGE WITHOUT NOTICE.

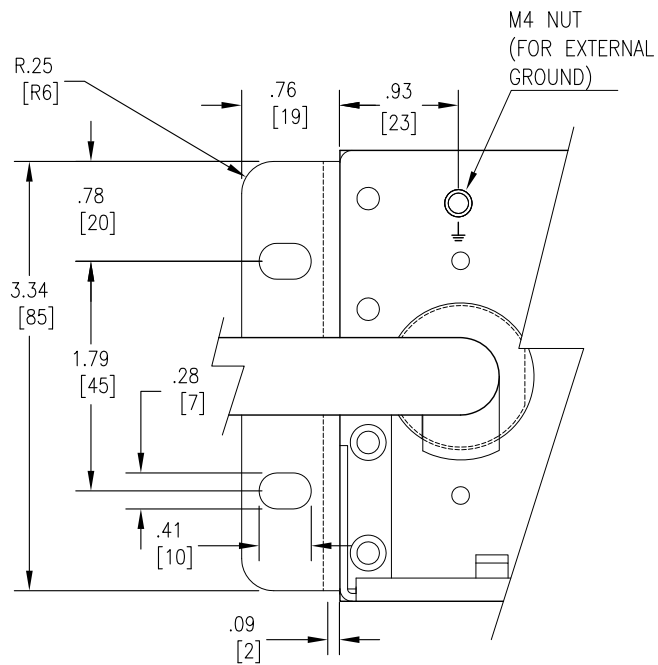


**TITLE:** RACK, PDU, SWITCHED, 2U  
 INPUT: 208VAC, 30A MAX, L6-30P  
 OUTPUT: (16) IEC 320 C13  
 DOUBLE POLE CIRCUIT BREAKERS  
 MECHANICAL LAYOUT

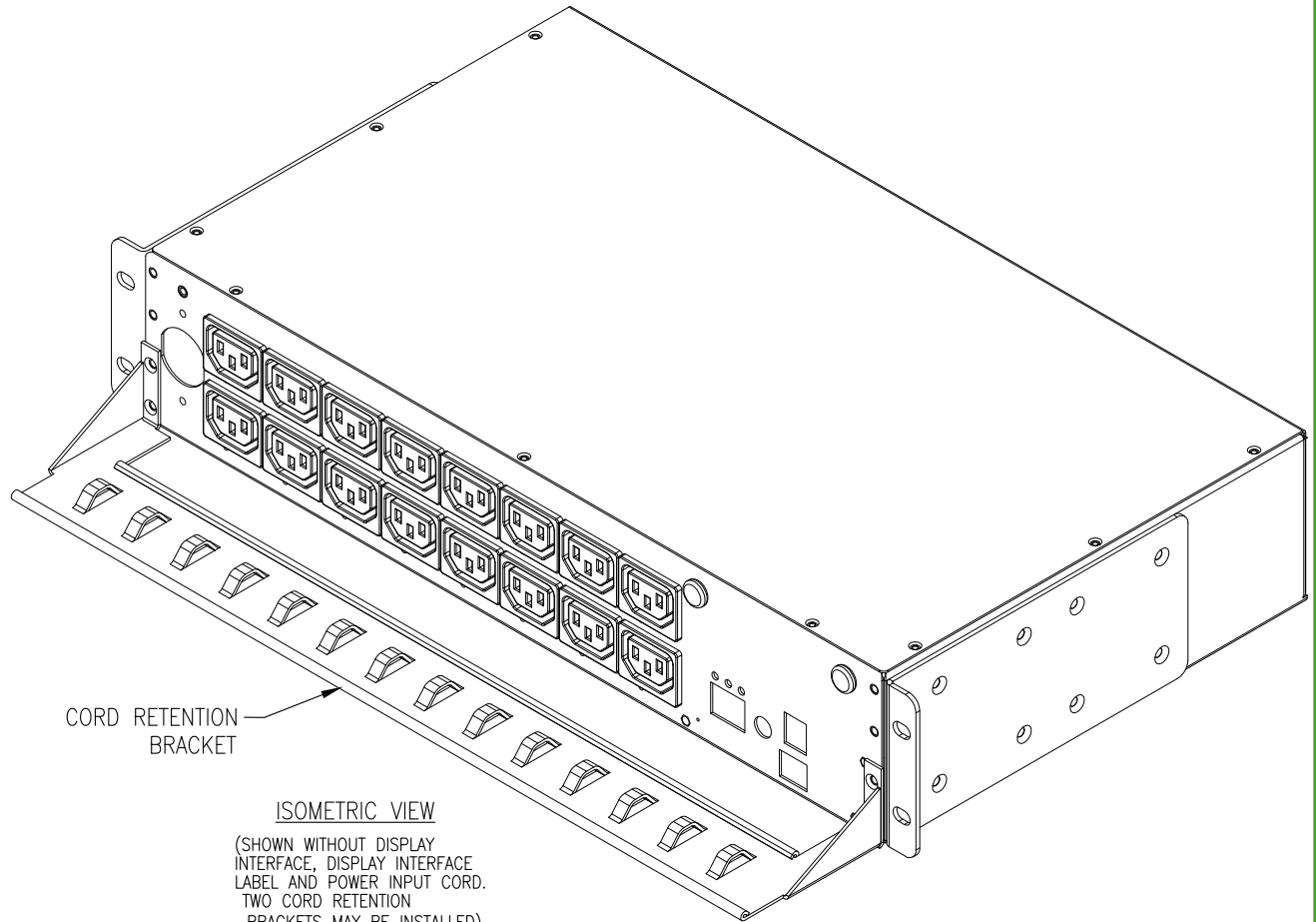
<b>DWG NO:</b>	AP7911B	<b>REV:</b>	0
<b>DRAWN BY:</b>	JAYAPRAKASH	24-AUG-16	THIRD ANGLE PROJ
<b>ENGINEER:</b>	KATIE RICK	7-DEC-16	
<b>APPROVED BY:</b>	KATIE RICK	7-DEC-16	



VIEW A  
INPUT PLUG



VIEW C  
MOUNTING PLATE DETAIL



ISOMETRIC VIEW  
(SHOWN WITHOUT DISPLAY  
INTERFACE, DISPLAY INTERFACE  
LABEL AND POWER INPUT CORD.  
TWO CORD RETENTION  
BRACKETS MAY BE INSTALLED).

NOTES:

1. INSTALLATION SHALL COMPLY WITH ALL APPLICABLE NATIONAL, STATE AND LOCAL ELECTRICAL REGULATIONS.
2. REFER TO PRODUCT DOCUMENTATION FOR ADDITIONAL DETAILS PRIOR TO INSTALLATION AND SITE PREPARATION WORK
3. ALL DIMENSIONS ARE IN INCHES [MILLIMETERS].

THIS DRAWING AND SPECIFICATIONS HEREIN ARE THE PROPERTY OF SCHNEIDER ELECTRIC AND SHALL NOT BE COPIED, REPRODUCED OR USED IN WHOLE OR IN PART, AS THE BASIS FOR THE MANUFACTURE OR SALE OF ITEMS WITHOUT WRITTEN PERMISSION FROM SCHNEIDER ELECTRIC. THIS DRAWING IS BASED UPON LATEST AVAILABLE INFORMATION AND IS SUBJECT TO CHANGE WITHOUT NOTICE.



TITLE: RACK, PDU, SWITCHED, 2U  
INPUT: 208VAC, 30A MAX, L6-30P  
OUTPUT: (16) IEC 320 C13  
DOUBLE POLE CIRCUIT BREAKERS  
ISOMETRIC AND DETAIL VIEWS

DWG NO:	AP7911B	REV:	0
DRAWN BY:	JAYAPRAKASH	DATE:	24-AUG-16
ENGINEER:	KATIE RICK	DATE:	7-DEC-16
APPROVED BY:	KATIE RICK	DATE:	7-DEC-16
PROJECT:	STD SUBMITTAL DRAWINGS	SHEET:	2 OF 2
			THIRD ANGLE PROJ