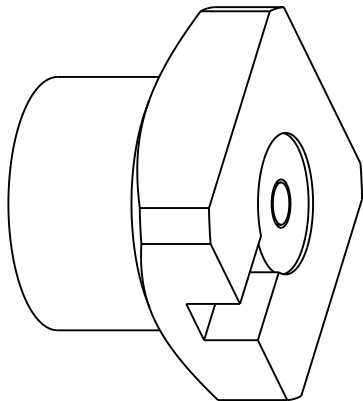


NOTES:

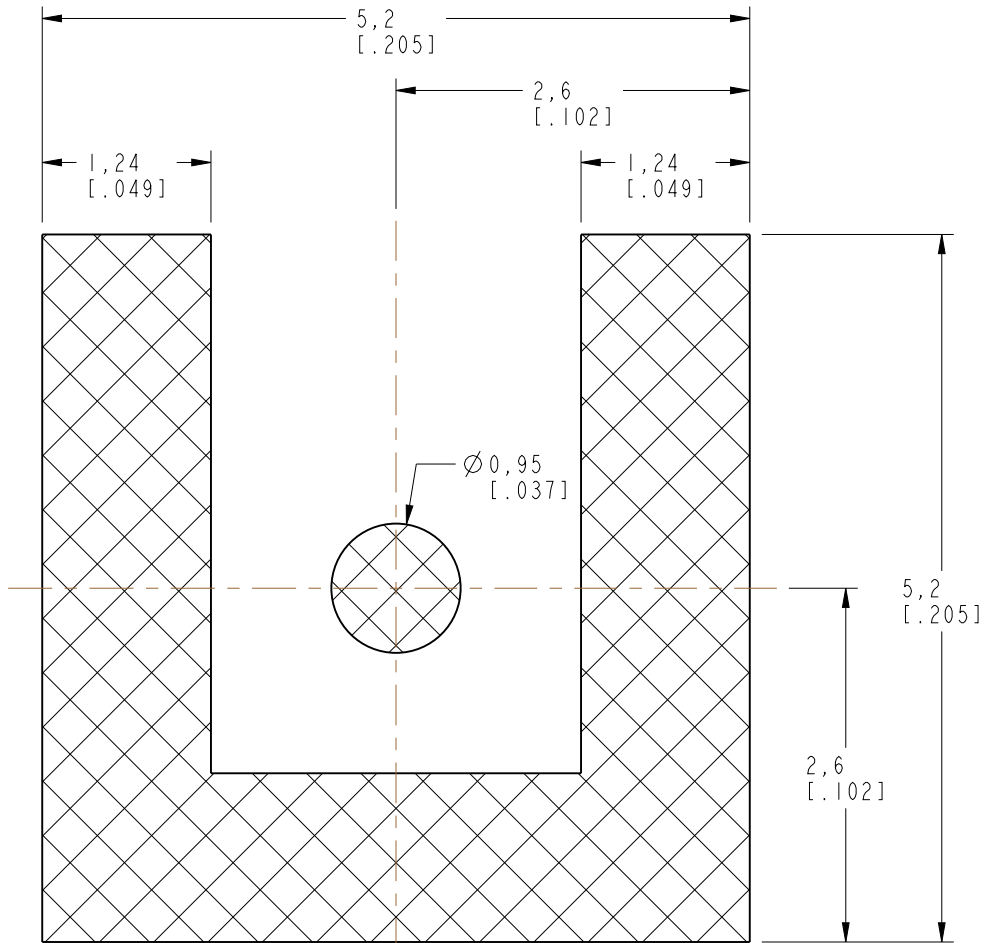
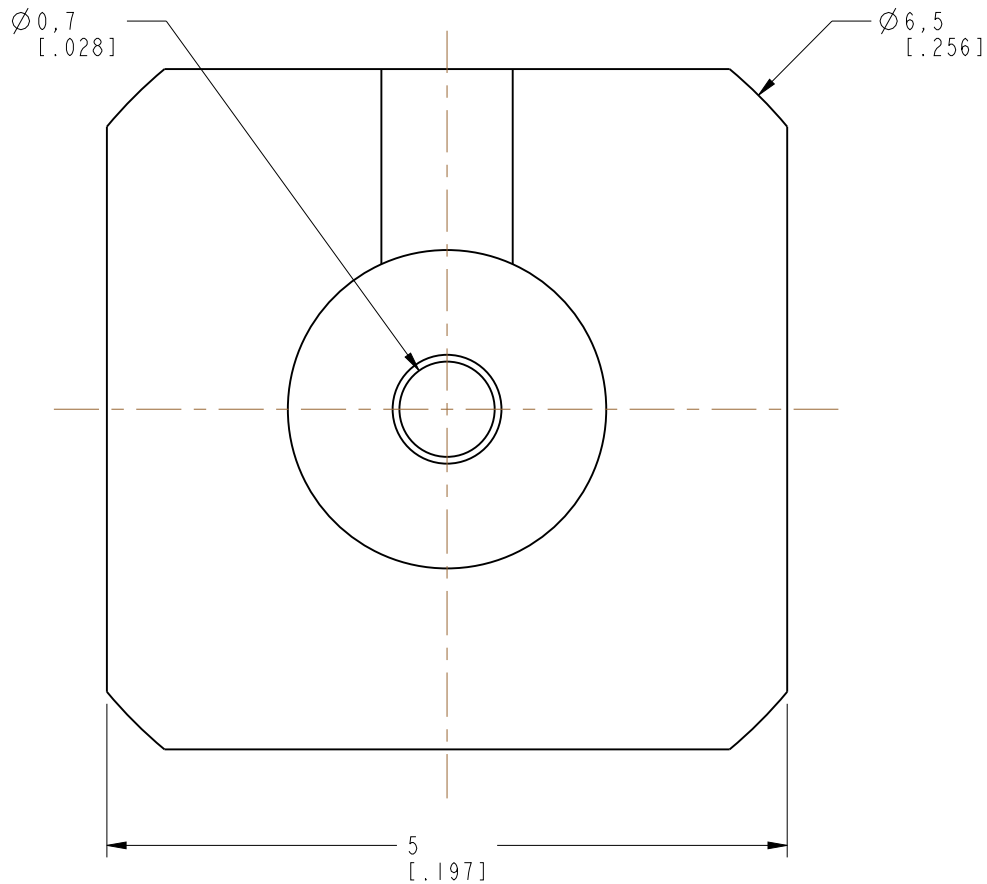
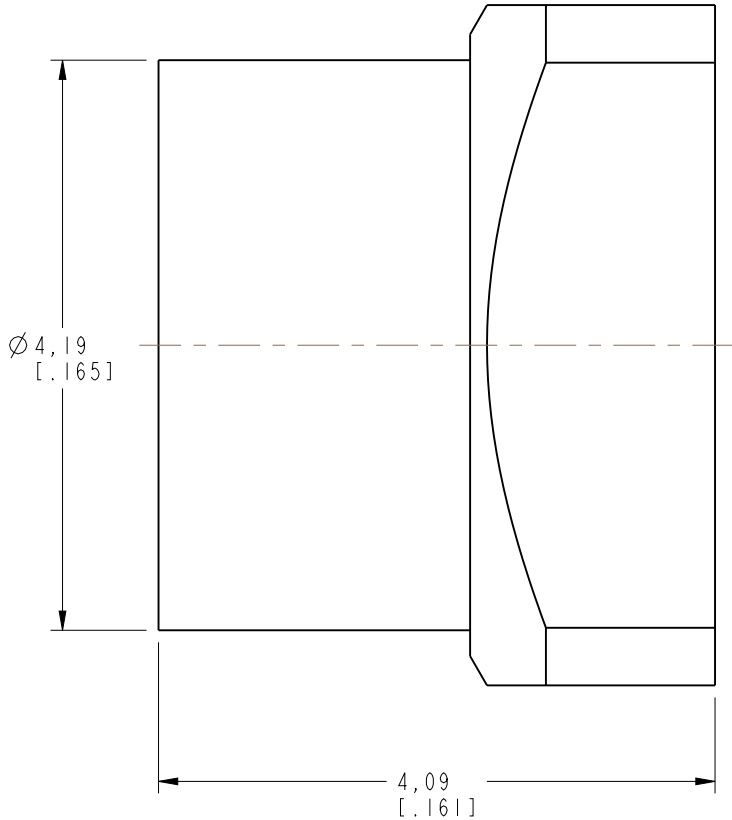
1. MATERIALS AND FINISHES:
BODY - BRASS, GOLD PLATING
CONTACT - BeCu, GOLD PLATING
INSULATOR - PTFE
2. ELECTRICAL:
A. IMPEDANCE: 50 OHM
B. FREQUENCY RANGE: DC - 26.5 GHz
C. VSWR(RETURN LOSS): 1.10 (26.4 dB), MAX. DC - 6 GHz
1.15 (23.1 dB), MAX. 6 - 10 GHz
1.30 (17.7 dB), MAX. 10 - 18 GHz
D. DIELECTRIC WITHSTANDING VOLTAGE: 335 VRMS, MIN.
3. MECHANICAL:
A. DURABILITY: 500 CYCLES MIN.
B. ENGAGEMENT FORCE: 10 LBS [45 N] MAX.
C. DISENGAGEMENT FORCE: 2 LBS [9 N] MIN.
D. INNER CONTACT RETENTION FORCE: 1.5 LB [7 N] MIN.
E. TEMPERATURE RANGE: -65° C TO 165° C
4. PACKAGING:
A. QUANTITY: TAPE & REEL PACKAGING, 1000 PCS/REEL
B. MARKING: REEL TO BE MARKED:
"AMPHENOL, SMP-MSLD-PCSI8T, AND DATE CODE"

THIRD ANGLE PROJ.

REVISIONS				
REV	DESCRIPTION	DATE	ECN	APPR
A	RELEASE TO MFG.	29-Jul-19	12481	SV



SCALE 8.000

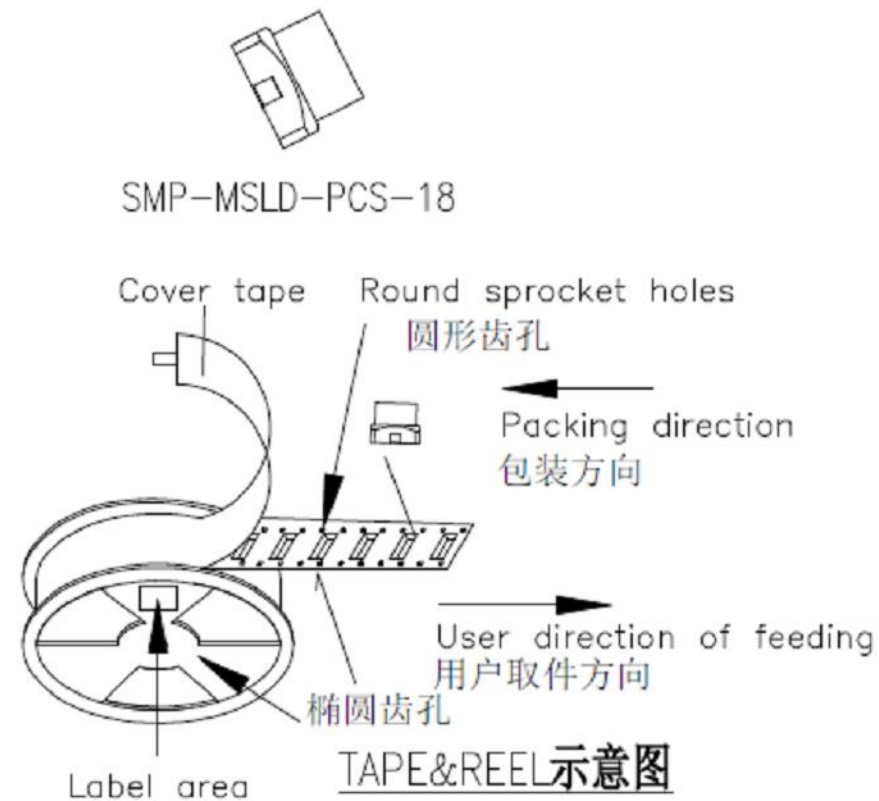


RECOMMENDED PCB PAD LAYOUT

CUSTOMER OUTLINE DRAWING

ALL OTHER SHEETS ARE FOR INTERNAL USE ONLY

UNLESS OTHERWISE SPECIFIED, DIMENSIONS ARE IN METRIC AND TOLERANCES ARE: <0.5mm ± 0.05mm 0.5 - 6mm ±0.1mm 6 - 30mm ±0.2mm 30 - 120mm ± 0.3mm ANGLES ±1° NOTICE - These drawings, specifications, or other data (1) are, and remain the property of Amphenol corp. (2) must be returned upon request; and (3) are confidential and not to be disclosed to any person other than those to whom they are given by Amphenol Corp. the furnishing of these drawings, specifications, or other data by Amphenol Corp., or to any other person to anyone for any purpose is not to be regarded by implication or otherwise in any manner licensing, granting rights to permitting such holder or any other person to manufacture, use or sell any product, process or design, patented or otherwise, that may in any way be related to or disclosed by said drawings, specifications, or other data.	MATERIAL SEE NOTES	DRAWN S.VO	DATE 27-Mar-19	TITLE SMP JACK PCB SMT RECEPTACLE LIMITED DETENT		Amphenol RF www.amphenolrf.com	
	REFERENCE	ENGINEER S.VO	DATE 27-Mar-19				
	EAR# 8532	APPROVED --	DATE --				
	REF: SMP1251DI-001-30GP30G-50	CAD FILE		SCALE: 18.0:1.0	SHEET 2 OF 3	DRAWING NO. SMP-MSLD-PCSI8T	ITEM NO. SMP-MSLD-PCSI8T
	CONFIGURATION LEVEL: In Work			DWG SIZE B	REV A	PART NO. SMP-MSLD-PCSI8T	
	FINISH						



Notes:

1. 10 sprocket hole pitch cumulative tolerance $\pm 0.20\text{mm}$
(每10个链轮齿孔直径累计公差为 $\pm 0.20\text{mm}$)
2. Carrier camber not to exceed 1mm in 250mm.
(传送带弯曲变形度每250mm不超过1mm)
3. A₁ and B₁ measured on a plane 0.3mm above the bottom of the pocket. (A₀与B₀在同一平面测量且距口袋底部0.3mm)
4. K₁ measured from a plane on the inside bottom of the pocket to the top surface of the carrier.
(K₀为口袋底部与材料表面的平面距离。)
5. All dimensions meet EIA-481-D requirements.
(所有尺寸符合EIA-481-D标准要求。)
6. Material: Black Antistatic polystyrene .
(材料: 黑色聚苯乙烯。)
7. Thickness: $0.40 \pm 0.05\text{ mm}$.
(厚度: $0.40 \pm 0.05\text{毫米}$ 。)
8. Packing length per 13" reel : 12.864Meters.
(每个13"卷轴包装长度12.864米。)
9. Component loader per 13" reel : 1000pcs.
(每个13"卷轴可装1000个零件。)

技术要求:

在没有保护膜的情况下, 0-90度往返折弯3次, 卷带不会破裂; 冷封带0.3~1.3N;
厚度及防静电要求需满足要求, 防静电性能使用寿命至少大于半年。载带侧壁支撑力2kgf以上。

ITEM	W	A ₀	B ₀	K ₀	K ₁	P ₁	F	E	D ₀	D ₁	P ₀	P ₂	T
DIM	16±0.3	5.3 ±0.1	5.3±0.1	4.3±0.1		12.0±0.1	7.5±0.1	1.75±0.1	1.5 ^{+0.1} _{-0.0}		4.0±0.1	2.0±0.1	0.4±0.05

包 装 信 息	
卷 盘	330mmx16mm
卷盘信息	宝蓝连体盘
上封带	13.3MM
每盘格數	1000pcs+前后各空36pcs
生產模具信息	
間 距	12mm
模具穴數	8穴
成型模數	134模
每盤長度	12.864M

UNLESS OTHERWISE SPECIFIED, DIMENSIONS ARE IN METRIC AND TOLERANCES ARE:

< 0.5mm	0.5 - 6mm	6 - 30mm	30 - 120mm	ANGLES
± 0.05mm	± 0.1mm	± 0.2mm	± 0.3mm	± 1°

NOTICE - These drawings, specifications, or other data (1) are, and remain the property of Amphenol corp. (2) must be returned upon request; and (3) are confidential and not to be disclosed to any person other than those to whom they are given by Amphenol Corp. The furnishing of these drawings, specifications, or other data by Amphenol Corp., or to any other person to anyone for any purpose is not to be regarded by implication or otherwise in any manner licensing, granting rights to permitting such holder or any other person to manufacture, use or sell any product, process or design, patented or otherwise, that may in any way be related to or disclosed by said drawings, specifications, or other data.

MATERIAL

REFERENCE

REF: SMP125IDI-001-30GP30G-50

CONFIGURATION LEVEL: In Work

FINISH

DRAWN

S. VO

ENGINEER

S. VO

APPROVED

— —

CAD FILE

[illegible]

DATE _____

25-Jul-19

DATE _____

25-Ju

DATE _____

— —

T	I	T	L	E
---	---	---	---	---

NAME	STATUS	TYPE	DESCRIPTION
SMP	LACK		

SMT JACK
DCD SMT DECEMBER

PCB SMT RECEPTACLE

	LIMITED DETENT
--	----------------

SCALE: 18.0:1.0 SHEET 3 OF 3

	DWG SIZE	REV
--	----------	-----

B	A
---	---

Amphenol RF

www.amphenorrf.com

DRAWING NO. SMP-MSLD-PCS18T

ITEM NO.	SMP-MSLD-PCS18T
----------	-----------------

PART NO	SMP-MSLD-PCS18T
---------	-----------------