

PLEASE CHECK WWW.MOLEX.COM FOR LATEST PART INFORMATION

Part Number: [0877159913](#)
Status: **Active**
Overview:
Description: 1.00mm (.039") Pitch, PCI Express* Connector, 164 Circuits, Nylon 4/6 Glass-filled, Black Housing, Copper Alloy, 0.76µm (30µ") Gold (Au) Plating, with Beveled Metal Pins, 3.00mm (.118") Solder-tail, Lead Free

Agency Certification

CSA LR19980
 UL E29179

General

Product Family Edge Card Connectors
 Series 87715
 Comments PCI 16 lanes
 Component Type Edgecard to PCB
 Overview pci_express_card_edge_connector
 Product Name PCI Express*

Physical

Circuits (Loaded) 164
 Circuits (maximum) 164
 Circuits Detail All Signal
 Durability (mating cycles max) 50
 Entry Angle Vertical (Top Entry)
 Flammability 94V-0
 Keying to Mating Part Yes
 Material - Plating Mating Gold
 Material - Plating Termination Tin
 PC Tail Length (in) 0.100 In
 PC Tail Length (mm) 2.54 mm
 PCB Locator Yes
 PCB Retention Yes
 PCB Thickness Recommended (in) 0.062 In
 PCB Thickness Recommended (mm) 1.60 mm
 Packaging Type Tray
 Pitch - Mating Interface (in) 0.039 In
 Pitch - Mating Interface (mm) 1.00 mm
 Pitch - Term. Interface (in) 0.039 In
 Pitch - Term. Interface (mm) 1.00 mm
 Plating min: Mating (µin) 30
 Plating min: Mating (µm) 0.76
 Plating min: Termination (µin) 100
 Plating min: Termination (µm) 2.50
 Polarized to Mating Part Yes
 Temperature Range - Operating -55°C to +85°C
 Termination Interface: Style Through Hole

Electrical

Current - Maximum per Contact 1.1A
 Voltage - Maximum 50V AC (RMS)/DC

Material Info

Reference - Drawing Numbers

Packaging Specification PK-87715-205
 Product Specification PS-87715-200

EU RoHS
ELV and RoHS
Compliant
REACH SVHC
 Not Reviewed
Halogen-Free
Status
Not Reviewed

China RoHS



Need more information on product environmental compliance?

Email productcompliance@molex.com
 For a multiple part number RoHS Certificate of Compliance, [click here](#)

Please visit the [Contact Us](#) section for any non-product compliance questions.

Search Parts in this Series
 87715Series

Mates With
 PCI Express Card

Sales Drawing
Test Summary

SD-87715-211
TS-87715-211

* PCI Express is a registered trademark of PCI-SIG®

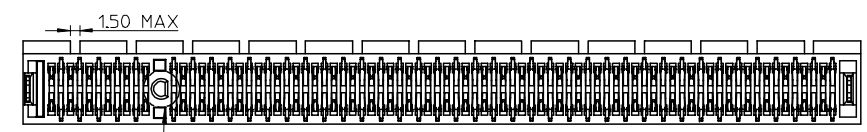
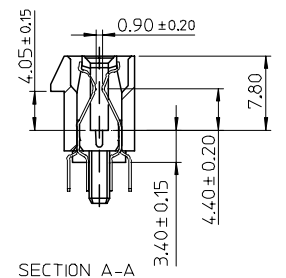
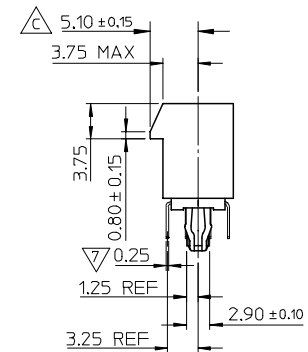
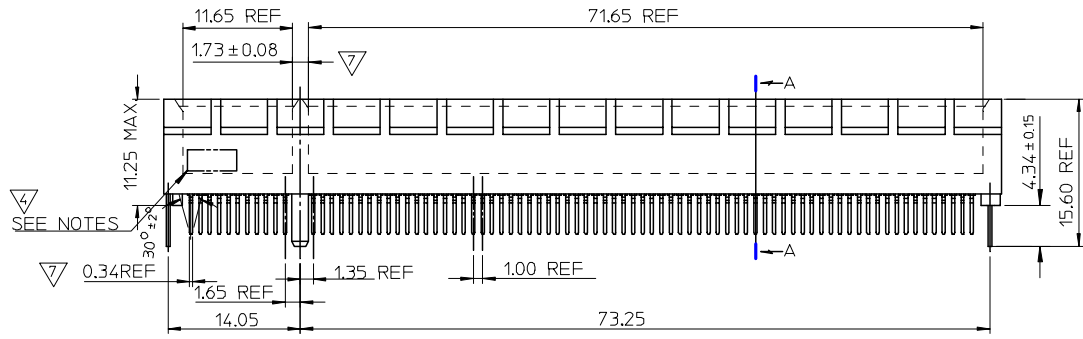
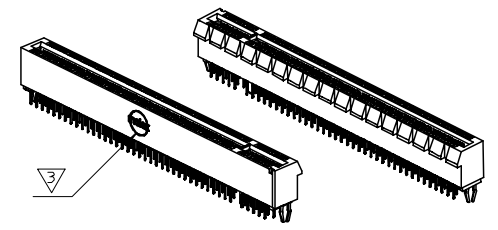
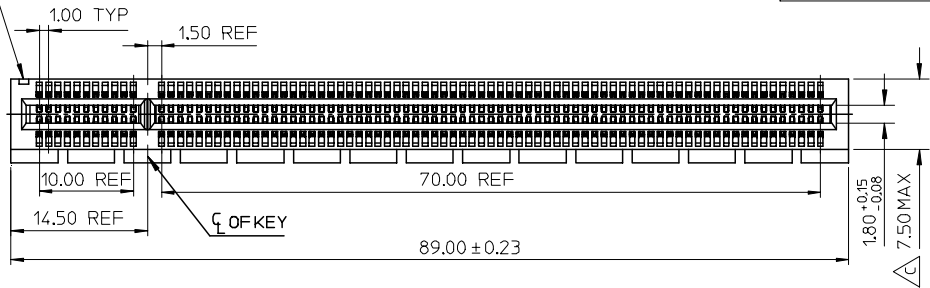
This document was generated on 06/04/2010

PLEASE CHECK WWW.MOLEX.COM FOR LATEST PART INFORMATION

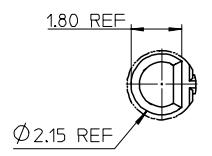
10 9 8 7 6 5 4 3 2 1

PART NUMBER	DIM A	CONTACT AREA PLATING OPTION	SOLDERTAIL PLATING OPTION	PROT SIZE	TOTAL CKTS SIZE
87715-9912	2.54	30 MICROINCH MIN. GOLD	100 MICROINCH MIN. TIN OVER NICKEL PLATED OVERALL	16	164
87715-9913	3.00	30 MICROINCH MIN. GOLD	100 MICROINCH MIN. TIN OVER NICKEL PLATED OVERALL	16	164

9
PIN #A1 IDENTIFIER



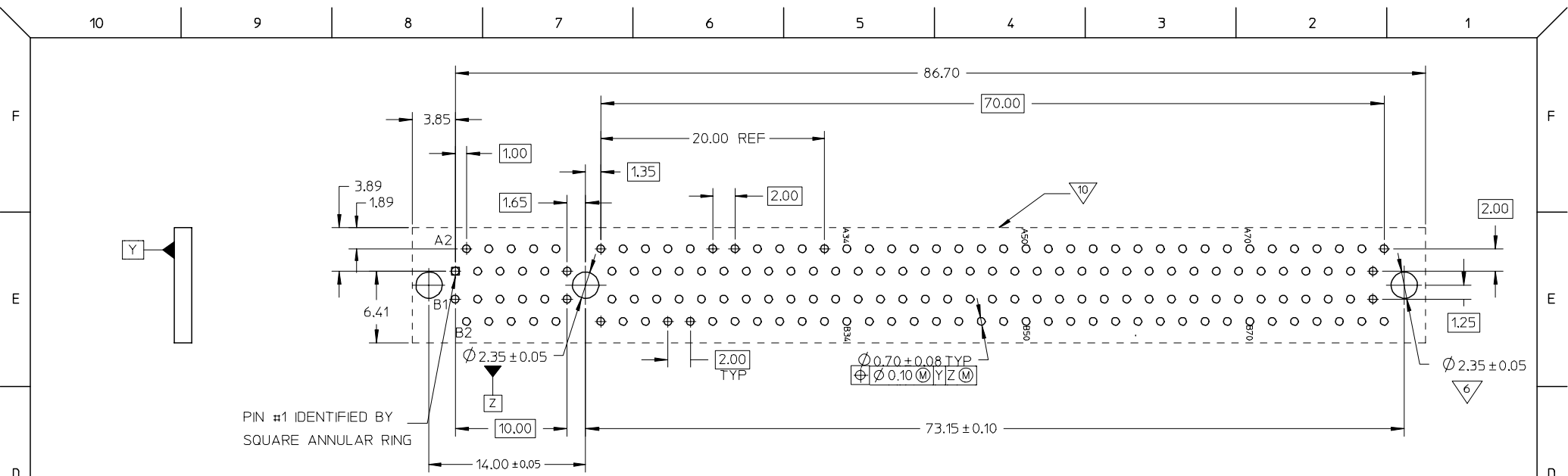
SEE DETAIL 1



DETAIL 1

REVISED DRAWING EC NO: SH2006-0769 DRWN: ALLIN 2006/05/30 CHKD: 2006/06/07 APPR: WMSCHANG 2006/06/08	QUALITY SYMBOLS ▽=0 ◻=0	GENERAL TOLERANCES (UNLESS SPECIFIED)		DIMENSION STYLE	SCALE	DESIGN UNITS	THIRD ANGLE PROJECTION		
				MM ONLY		METRIC			
		4 PLACES ± --- ± ---	3 PLACES ± --- ± ---	2 PLACES ± 0.25 ± ---	1 PLACE ± 0.25 ± ---	ANGULAR ± 3 °	DRAWN BY DATE KEN LEE 2006/03/22		TITLE
		DRAFT WHERE APPLICABLE MUST REMAIN WITHIN DIMENSIONS		SEE TABLE		APPROVED BY DATE WILSON CHANG 2006/03/22		MOLEX INCORPORATED	
				MATERIAL NO.	DOCUMENT NO.	SHEET NO.			
				SD-87715-211		1 OF 3			
THIS DRAWING CONTAINS INFORMATION THAT IS PROPRIETARY TO MOLEX INCORPORATED AND SHOULD NOT BE USED WITHOUT WRITTEN PERMISSION									

9 8 7 6 5 4 3 2 1



NOTES:

1. MATERIALS: HOUSING - HIGH TEMPERATURE THERMOPLASTIC, UL 94-V0 (BLACK)
TERMINAL - COPPER ALLOY
2. PLATING: CONTACT AREA - SEE TABLE IN SHEET 2 FOR PLATING OPTION
SOLDER TAILS - SEE TABLE IN SHEET 2 FOR PLATING OPTION
UNDERPLATING - 50µ" (1.27µm) MIN. NICKEL
- 3 MOLEX LOGO - TO BE LASER-MARKED
- 4 DATE CODE - TO BE LASER-MARKED
- 5 CHAMFER EDGES OF EDGE CARD MUST BE FREE OF CUTTING BURRS
- 6 THE HORIZONTAL AXIS FOR THE FOOTPRINT HOLE PATTERN IS ESTABLISHED BY A LINE THROUGH THE CENTRE OF THE TWO Ø2.35 HOLES. THE VERTICAL AXIS IS 90° TO THE HORIZONTAL AXIS, THROUGH THE CENTRE OF DATUM Z
- 7 FEATURES DESIGNED TO FUNCTIONALLY MATE/MOUNT (SLIP FIT) PER THE RECOMMENDED EDGE CARD AND PCB PATTERN.
- 8 PINS FOR HOT PLUG PRESENCE DETECTION. NO TIE BAR PERMITTED FROM CARD EDGE TO LEADING EDGE OF PAD FOR THE HOT PLUG PINS.
- 9 PIN #1 IDENTIFIER
- 10 KEEP OUT AREA - NO EXTERNAL COMPONENTS ALLOWED ON PCB SURFACE

RECOMMENDED P.C.B. PATTERN
(CONNECTOR SIDE)

THICKNESS: 1.57mm FOR 2.54mm SOLDER TAIL LENGTH
2.35mm FOR 3.00mm SOLDER TAIL LENGTH

11. PRODUCT SPECIFICATION REFER TO PS-87715-200.
12. PACKAGE SPECIFICATION REFER TO PK-87715-205.
13. TEST SUMMARY REFER TO TS-87715-211.
14. LEAD FREE AND RoHS COMPLIANT PRODUCT.

SEE SHEET 1 EC NO: SH2006-0769 DRWN: ALLIN 2006/05/30 CHKD: 2006/06/07 APPR: WISCHANG 2006/06/08	DESCRIPTION REV	QUALITY SYMBOLS	GENERAL TOLERANCES (UNLESS SPECIFIED)	DIMENSION STYLE MM ONLY	SCALE	DESIGN UNITS METRIC	THIRD ANGLE PROJECTION																																												
		$\nabla = 0$ $\nabla C = 0$	<table border="1"> <thead> <tr> <th></th> <th>mm</th> <th>INCH</th> </tr> </thead> <tbody> <tr> <td>4 PLACES</td> <td>± ---</td> <td>± ---</td> </tr> <tr> <td>3 PLACES</td> <td>± ---</td> <td>± ---</td> </tr> <tr> <td>2 PLACES</td> <td>± 0.25</td> <td>± ---</td> </tr> <tr> <td>1 PLACE</td> <td>± 0.25</td> <td>± ---</td> </tr> <tr> <td colspan="3">ANGULAR ± 3°</td> </tr> </tbody> </table>		mm	INCH	4 PLACES	± ---	± ---	3 PLACES	± ---	± ---	2 PLACES	± 0.25	± ---	1 PLACE	± 0.25	± ---	ANGULAR ± 3°			<table border="1"> <thead> <tr> <th>DRAWN BY</th> <th>DATE</th> <th>TITLE</th> </tr> </thead> <tbody> <tr> <td>KEN LEE</td> <td>2006/03/22</td> <td rowspan="3">PCI EXPRESS X16 (164CKT) VERT DIP WITH BOARD LOCK (LEAD FREE VERSION)</td> </tr> <tr> <td>CHECKED BY</td> <td>DATE</td> </tr> <tr> <td>ALLEN LIN</td> <td>2006/03/22</td> </tr> <tr> <td colspan="2">APPROVED BY DATE</td> <td rowspan="2"> MOLEX INCORPORATED </td> </tr> <tr> <td colspan="2">WILSON CHANG 2006/03/22</td> </tr> <tr> <td colspan="2">MATERIAL NO.</td> <td>DOCUMENT NO.</td> <td>SHEET NO.</td> </tr> <tr> <td colspan="2">DRAFT WHERE APPLICABLE MUST REMAIN WITHIN DIMENSIONS</td> <td>SEE TABLE</td> <td>SD-87715-211</td> <td>2 OF 3</td> </tr> <tr> <td colspan="5"> SIZE A3 THIS DRAWING CONTAINS INFORMATION THAT IS PROPRIETARY TO MOLEX INCORPORATED AND SHOULD NOT BE USED WITHOUT WRITTEN PERMISSION </td> </tr> </tbody></table>	DRAWN BY	DATE	TITLE	KEN LEE	2006/03/22	PCI EXPRESS X16 (164CKT) VERT DIP WITH BOARD LOCK (LEAD FREE VERSION)	CHECKED BY	DATE	ALLEN LIN	2006/03/22	APPROVED BY DATE		MOLEX INCORPORATED	WILSON CHANG 2006/03/22		MATERIAL NO.		DOCUMENT NO.	SHEET NO.	DRAFT WHERE APPLICABLE MUST REMAIN WITHIN DIMENSIONS		SEE TABLE	SD-87715-211	2 OF 3	SIZE A3 THIS DRAWING CONTAINS INFORMATION THAT IS PROPRIETARY TO MOLEX INCORPORATED AND SHOULD NOT BE USED WITHOUT WRITTEN PERMISSION				
			mm	INCH																																															
		4 PLACES	± ---	± ---																																															
3 PLACES	± ---	± ---																																																	
2 PLACES	± 0.25	± ---																																																	
1 PLACE	± 0.25	± ---																																																	
ANGULAR ± 3°																																																			
DRAWN BY	DATE	TITLE																																																	
KEN LEE	2006/03/22	PCI EXPRESS X16 (164CKT) VERT DIP WITH BOARD LOCK (LEAD FREE VERSION)																																																	
CHECKED BY	DATE																																																		
ALLEN LIN	2006/03/22																																																		
APPROVED BY DATE		MOLEX INCORPORATED																																																	
WILSON CHANG 2006/03/22																																																			
MATERIAL NO.		DOCUMENT NO.	SHEET NO.																																																
DRAFT WHERE APPLICABLE MUST REMAIN WITHIN DIMENSIONS		SEE TABLE	SD-87715-211	2 OF 3																																															
SIZE A3 THIS DRAWING CONTAINS INFORMATION THAT IS PROPRIETARY TO MOLEX INCORPORATED AND SHOULD NOT BE USED WITHOUT WRITTEN PERMISSION																																																			

10 9 8 7 6 5 4 3 2 1

F F

E E

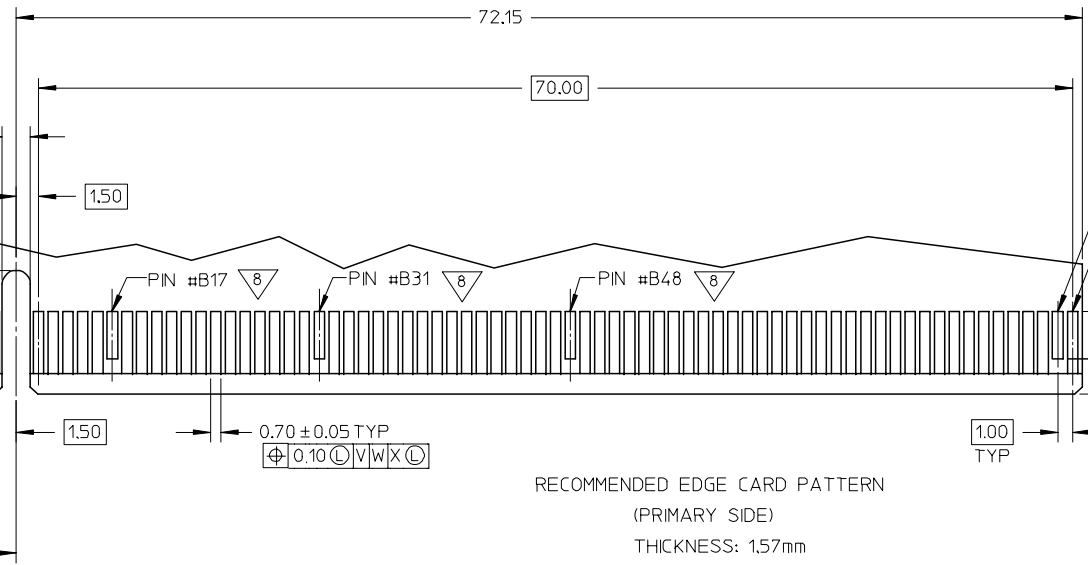
D D

C C

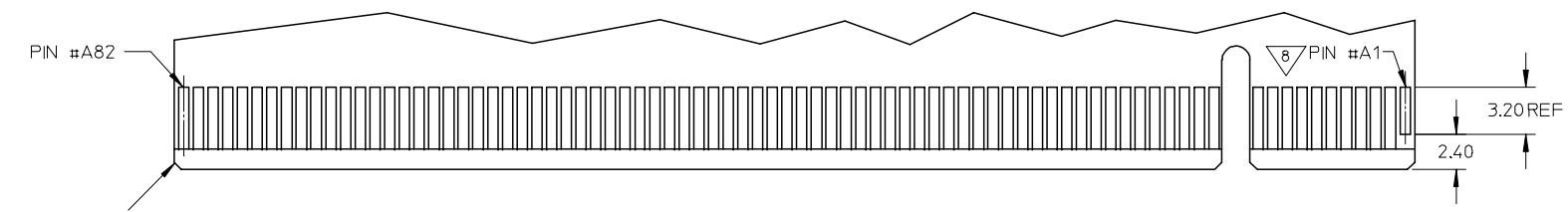
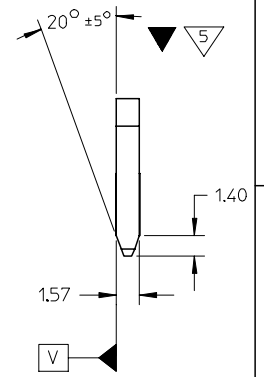
B B

A A

9 8 7 6 5 4 3 2 1



RECOMMENDED EDGE CARD PATTERN
(PRIMARY SIDE)
THICKNESS: 1.57mm



RECOMMENDED EDGE CARD PATTERN
(SECONDARY SIDE)
THICKNESS: 1.57mm

SEE SHEET 1	EC NO: SH2006-0769	2006/05/30
	DRWN: ALLIN	2006/06/07
	CHKD:	
	APPR: WMSCHANG	2006/06/08

QUALITY SYMBOLS	▽=0
	∇=0

GENERAL TOLERANCES (UNLESS SPECIFIED)	mm	INCH
	4 PLACES ± ---	± ---
	3 PLACES ± ---	± ---
	2 PLACES ± 0.25	± ---
	1 PLACE ± 0.25	± ---
	ANGULAR ± 3°	
DRAFT WHERE APPLICABLE MUST REMAIN WITHIN DIMENSIONS		

DIMENSION STYLE		SCALE	DESIGN UNITS
MM ONLY			METRIC
DRAWN BY	DATE	TITLE	
KEN LEE	2006/03/22	PCI EXPRESS X16 (164CKT) VERT DIP WITH BOARD LOCK (LEAD FREE VERSION)	
CHECKED BY	DATE	MOLEX INCORPORATED	
ALLEN LIN	2006/03/22		
APPROVED BY	DATE	DOCUMENT NO.	
WILSON CHANG	2006/03/22	SD-87715-211	
MATERIAL NO.		SHEET NO.	
SEE TABLE		3 OF 3	

DRAWN BY		DATE	TITLE
KEN LEE		2006/03/22	PCI EXPRESS X16 (164CKT) VERT DIP WITH BOARD LOCK (LEAD FREE VERSION)
CHECKED BY		DATE	MOLEX INCORPORATED
ALLEN LIN		2006/03/22	
APPROVED BY		DATE	DOCUMENT NO.
WILSON CHANG		2006/03/22	SD-87715-211
MATERIAL NO.		SHEET NO.	
SEE TABLE		3 OF 3	