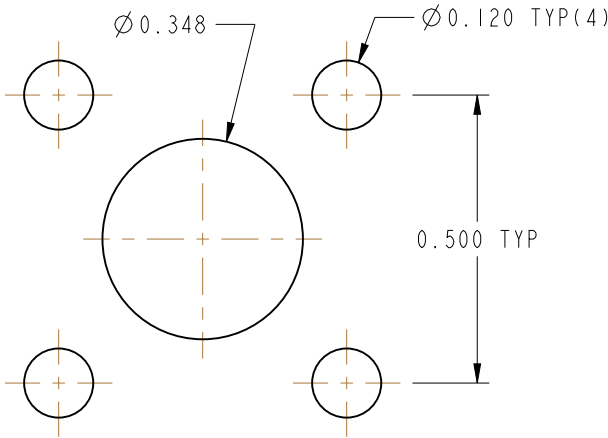
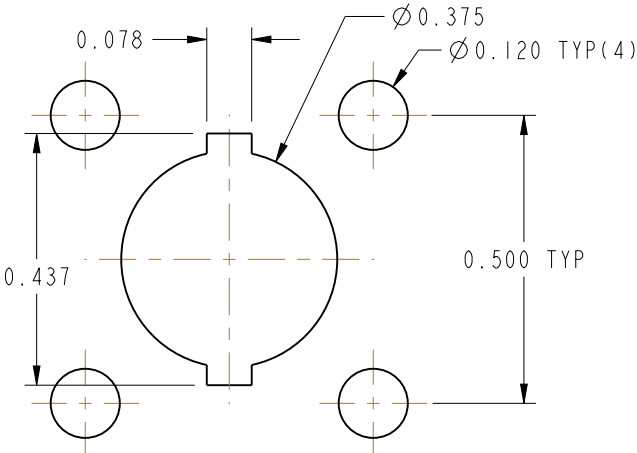


- NOTES:
- MATERIALS AND FINISHES:  
BODY - SUB ASSEMBLY-BRASS, NICKEL PLATING  
CONTACT - BERYLLIUM COPPER, SILVER PLATING  
INSULATOR - COPOLYMER OF STYRENE
  - ELECTRICAL:  
A. IMPEDANCE: 50 OHM
  - MECHANICAL:  
A. DURABILITY: 500 CYCLES MIN.  
B. TEMPERATURE RANGE: -65° C TO +165° C
  - PACKAGING:  
A. QUANTITY: SINGLE PACK  
B. MARKING: BAG TO BE MARKED  
"AMPHENOLRF, 31-105, AND DATE CODE"

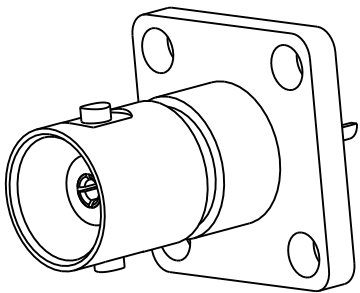
NOTES:  
WHEN DRILLING PANEL BE SURE TO ALLOW CLEARANCE  
FOR DIMENSIONS SHOWN



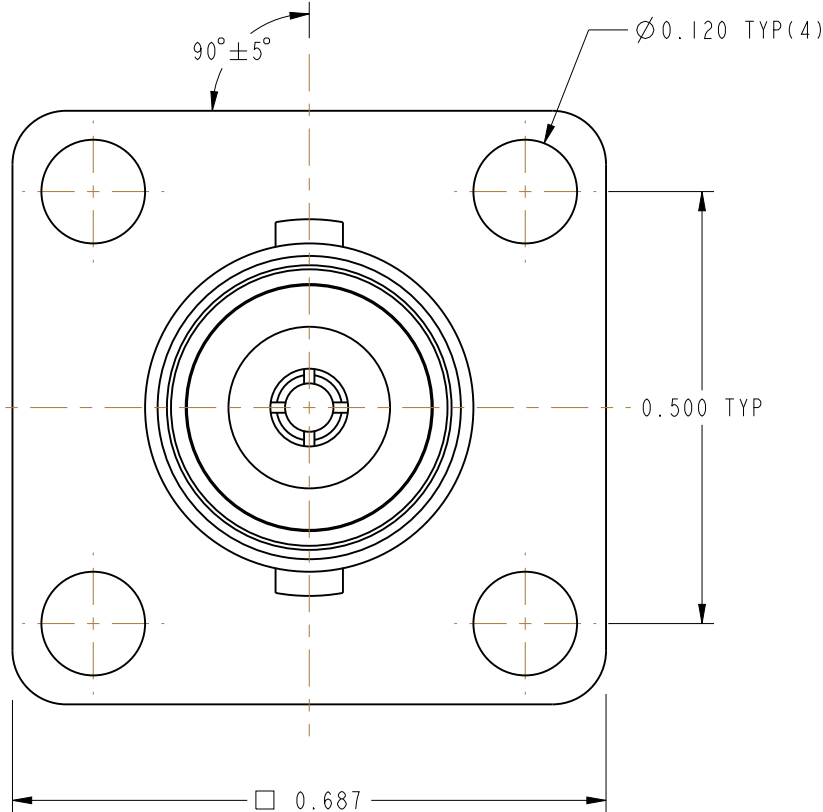
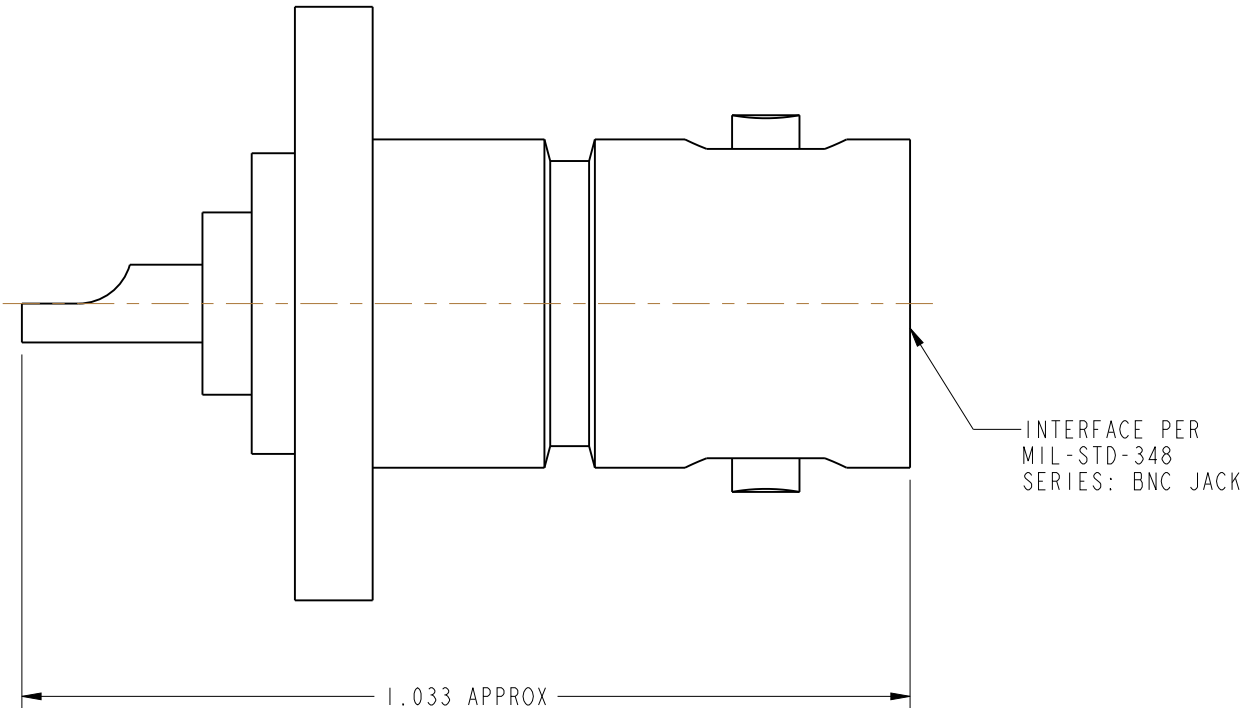
**RECOMMENDED MOUNTING  
HOLE DIMENESIONS FOR  
FLANGE FRONT PANEL**



**RECOMMENDED MOUNTING  
HOLE DIMENESIONS FOR  
FLANGE BEHIND OF PANEL**



SCALE 2.000



**CUSTOMER OUTLINE DRAWING**  
ALL OTHER SHEETS ARE FOR INTERNAL USE ONLY

UNLESS OTHERWISE SPECIFIED, DIMENSIONS ARE IN INCHES AND TOLERANCES ARE: 2 PLACE DECIMAL 3 PLACE DECIMAL ±.015 (0,381 mm) ±.005 (0,127 mm) ANGLES ± 1°	MATERIAL SEE NOTES	DRAWN KARTHIK R	DATE 12-Jan-10	TITLE "BNC" RECEPTACLE ASSEMBLY		Amphenol RF Danbury, CT, USA Tainan, Taiwan Shenzhen, China www.amphenolrf.com	
		ENGINEER D.J.P	DATE 9/29/66				
	REFERENCE	APPROVED	DATE 1/27/95	SCALE: 4.5:1		SHEET 2 OF 2	
		CAD FILE	CODE ID 74868	DWG SIZE B	DRAWING NO. 31-105		REV R