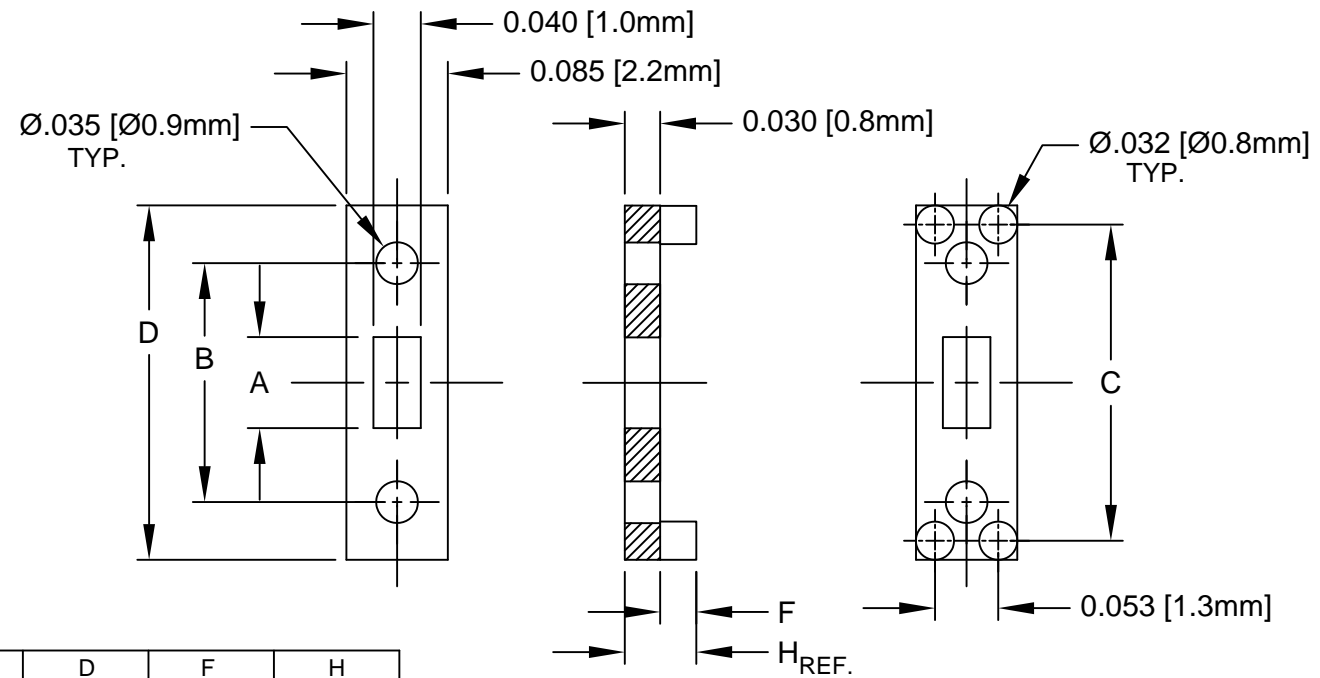



REV.	DESCRIPTION	DATE	APPROVED
C	Engineering Update w/o Changes	02/17/04	M. C.
D	Engineering Table Update	08/27/04	M. C.
E	Removed Part Numbers from Table	07/17/14	J. C.
F	Removed Part Numbers from Table	05/07/15	J. C.
G	Removed Material Code	05/23/16	J. C.



360 SERIES	A	B	C	D	F	H
360-200					.000	.030 (.76)
361-200	.076 (1.9)	.200 (5.1)	.265 (6.7)	.297 (7.5)	.030 (.76)	.060 (1.5)
362-200					.060 (1.5)	.090 (2.3)
366-300	.176 (4.5)	.300 (7.6)	.365 (9.3)	.397 (10.1)	.030 (7.6)	.060 (1.5)
370-400					.000	.030 (.76)
371-400	.276 (7.0)	.400 (10.2)	.465 (11.8)	.497 (12.6)	.030 (7.6)	.060 (1.5)
372-400					.060 (1.5)	.090 (2.3)
375-500	.376 (9.6)	.500 (12.7)	.565 (14.4)	.597 (15.2)	.000	.030 (.76)
381-600	.476 (12.1)	.600 (15.2)	.665 (16.9)	.697 (17.7)	.030 (7.6)	.060 (1.5)

- 2. MATERIAL: NYLON 6/6, 94V-2, WHITE.
- 1. GENERAL SPECIFICATIONS: BIVAR MOLDED COMPONENT SPECIFICATION BV00-E101.

STANDARD TOLERANCE (UNLESS OTHERWISE SPECIFIED)		 4 THOMAS, IRVINE, CA. 92618 TEL: (949) 951-8808 FAX: (949) 951-3974			
DECIMALS	ANGULAR				
.X ± .1	X° ± 1°	TITLE: 360 SERIES, SINGLE & DOUBLE IN-LINE MOUNT PART NO: 36X-XXX REVISION: G			
.XX ± .01					
.XXX ± .005		DESIGNED: M. Chen	DATE: 01/30/03	CAGE CODE : 32559	SHEET # 1 OF 1
		CHECKED: D. Green	DATE: 01/30/03	CAD GENERATED DOCUMENT, DO NOT MEASURE DRAWING.	