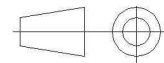
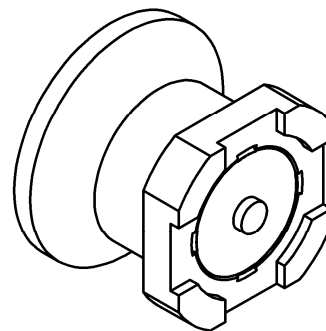
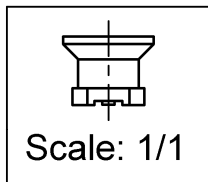
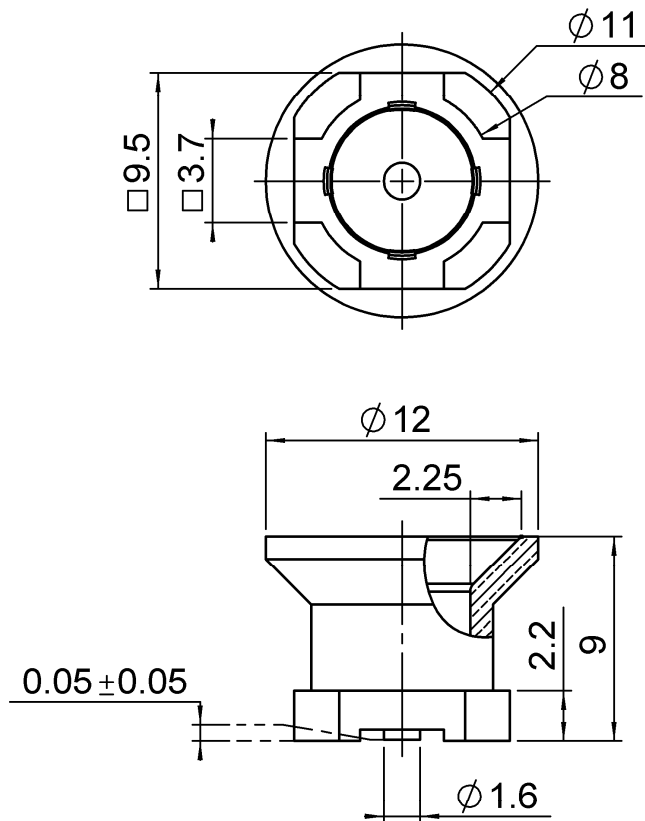


STRAIGHT MALE RECEPTACLE FOR SMT

SLIDE TYPE

R328.424.510

Series : **BMR-SPRING**



All dimensions are in mm.

COMPONENTS	MATERIALS	PLATING (μm)
BODY	BRASS	NPGR
CENTER CONTACT	BRASS	NPGR
OUTER CONTACT		
INSULATOR	PEEK	
GASKET		
OTHERS PARTS		
.	.	.
.	.	.

Issue : 1042 A

In the effort to improve our products, we reserve the right to make changes judged to be necessary.

RADIAL 

STRAIGHT MALE RECEPTACLE FOR SMT**R328.424.510****SLIDE TYPE**Series : **BMR-SPRING****PACKAGING**

Standard	Unit	Other
100	'W' option	Contact us

SPECIFICATION**ELECTRICAL CHARACTERISTICS**

Impedance	50	Ω
Frequency	0-8	GHz
VSWR	1.2* + 0,0000	x F(GHz) Maxi
Insertion loss	0.1**	$\sqrt{F}(\text{GHz})$ dB Maxi
RF leakage	- (TBT)	- F(GHz)) dB Maxi
Voltage rating	500	Veff Maxi
Dielectric withstanding voltage	1000	Veff mini
Insulation resistance	5000	M Ω mini

ENVIRONMENTAL

Operating temperature	-40/+120	$^{\circ}\text{C}$
Hermetic seal	NA	Atm.cm3/s
Panel leakage	NA	

OTHER CHARACTERISTICSAssembly instruction **NA**

Others :

*up to 3GHz , 0-6GHz:1.25Max,0-8GHz:1.35

*Measured by one bullet+two connectors

*,**Coaxial Transmission Line Only

MECHANICAL CHARACTERISTICS

Center contact retention	
Axial force – Mating end	18 N mini
Axial force – Opposite end	18 N mini
Torque	NA N.cm mini

Recommended torque

Mating	NA N.cm
Panel nut	NA N.cm

Mating life	100 Cycles mini
Weight	2,9610 g

Issue : 1042 A

In the effort to improve our products, we reserve the right to make changes judged to be necessary.


RADIAL

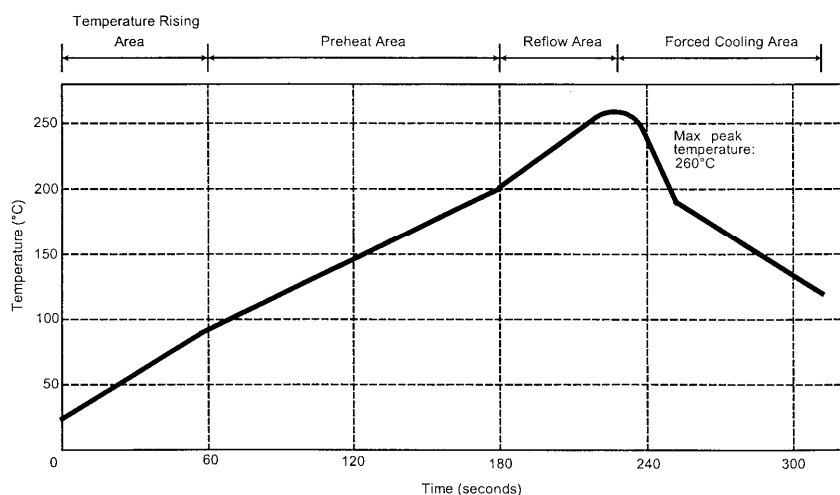
STRAIGHT MALE RECEPTACLE FOR SMT**SLIDE TYPE****R328.424.510**

Series : BMR-SPRING

SOLDER PROCEDURE

1. Deposit solder paste 'SnAg4Cu0.5' on mounting zone by screen printing application. We recommend a low residue flux.
We advise a thickness of 150 micromm (5.850 microinch). Verify that the edges of the zone are clean.
2. Placement of the receptacle on the mounting zone with an automatic machine of 'pick and place' type. A video camera is recommended for positioning of the component . Adhesive agents must not be used on the receptacle.
3. This process of soldering has been tested with convection oven .Below please find ,the typical profile to use.
4. The cleaning of printed circuit boards is not obliged .

Verification of solder joints and position of the component by visual inspection.

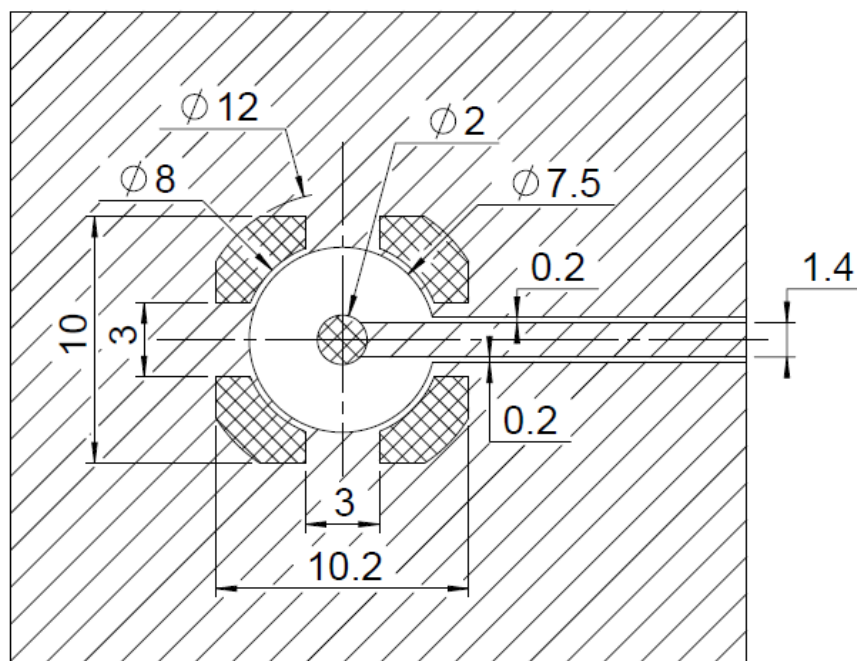

TEMPERATURE PROFILE

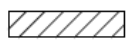
Parameter	Value	Unit
Temperature rising Area	1 - 4	°C/sec
Max Peak Temperature	260	°C
Max dwell time @260°C	10	sec
Min dwell time @235°C	20	sec
Max dwell time @235°C	60	sec
Temperature drop in cooling Area	-1 to - 4	°C/sec
Max dwell time above 100°C	420	sec

Issue : 1042 A

In the effort to improve our products, we reserve the right to make changes judged to be necessary.

RADIAL 

STRAIGHT MALE RECEPTACLE FOR SMT**SLIDE TYPE****R328.424.510**Series : **BMR-SPRING**PCB Layout
 Land for solder paste

 Pattern

COPLANAR LINE : Pattern and signal are on the same side. Thickness of PCB = 1.5 mm(double sides). The material of PCB is RO4350. The solder resist should be printed except for the land pattern on the PCB.

Shadow of receptacle for video camera**Issue : 1042 A**

In the effort to improve our products, we reserve the right to make changes judged to be necessary.

RADIAL 