

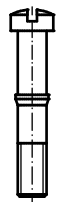
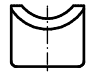
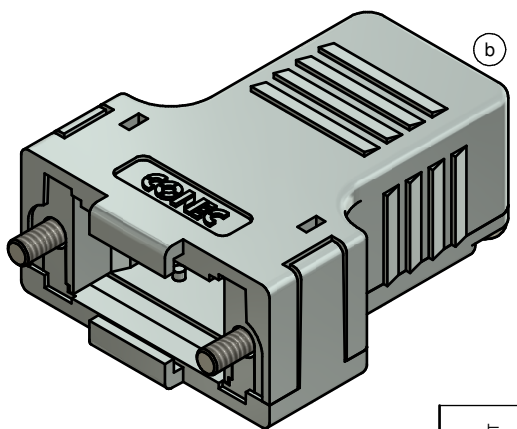
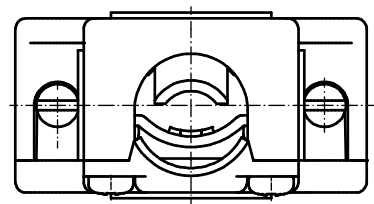


(b)

 <p>CABLE STRAIN RELIEF (1x)</p>	 <p>LENS HEAD SCREW (4x)</p>
 <p>SHORT SCREW (2x)</p>	 <p>PRESS INSERT (1x)</p>



(b)



NOTES:

1. METALHOOD+COVER: ABS UL 94 V-0; METALLIZED
2. CABLE STRAIN RELIEF: STEEL; NICKEL PLATED
3. PRESS INSERT: ABS UL 94 V-0; METALLIZED
4. SHORT SCREWS: STEEL; NICKEL PLATED
5. LENS HEAD SCREWS: STEEL; NICKEL PLATED

TECHNICAL DATA:

- TEMPERATURE RANGE: -33 °C to + 90 °C

Directive 2011/65/EU RoHS compliant

THIS DRAWING MAY NOT BE COPIED OR REPRODUCED IN ANY WAY, AND MAY NOT BE PASSED ON TO A THIRD PARTY WITHOUT WRITTEN PERMISSION. OWNERSHIP AND COPYRIGHT OF CONEC GmbH DO NOT ALTER CAD DRAWING BY HAND				tolerance		scale: 2:1	
				dim. in mm		material: SEE NOTES	
				date	name	title:	
				drawn	03.09.14	Unkrüer	<b>PLASTIC HOOD</b> 9pos. with straight cable exit
				appd.	04.09.14	Lehmenkühler	
				norm			
				d-old	16K2A171A		dwg no:
3 x b	Ä 5304	03.09.2014	Unkrüer			DIN-A3	
a	Original					(b) 16K1A3513	sh: 1
rev.	description	date	name	part no: 165X13469X			