

**PLEASE CHECK WWW.MOLEX.COM FOR LATEST PART INFORMATION**

**Part Number:** [0002081104](#)  
**Status:** **Active**  
**Description:** Claspcn™ Crimp Terminal Socket, Tin (Sn) Plated Brass Contact, 24-30 AWG, Bag

**Documents:**

[Drawing \(PDF\)](#) [RoHS Certificate of Compliance \(PDF\)](#)

**Agency Certification**

CSA LR19980  
 UL E29179

**General**

Product Family Crimp Terminals  
 Series [1881](#)  
 Crimp Quality Equipment Yes  
 Product Name Claspcn™

**Physical**

Gender Female  
 Material - Metal Brass  
 Material - Plating Mating Tin  
 Material - Plating Termination Tin  
 Packaging Type Bag  
 Plating min: Mating (µin) 20  
 Plating min: Mating (µm) 0.50  
 Plating min: Termination (µin) 20  
 Plating min: Termination (µm) 0.50  
 Termination Interface: Style Crimp or Compression  
 Wire Insulation Diameter 0.76-1.52mm (.030-.060")  
 Wire Size AWG 24, 26, 28, 30  
 Wire Size mm² N/A

**Material Info**

Old Part Number 188103L

**Reference - Drawing Numbers**

Sales Drawing SD-1881-\*

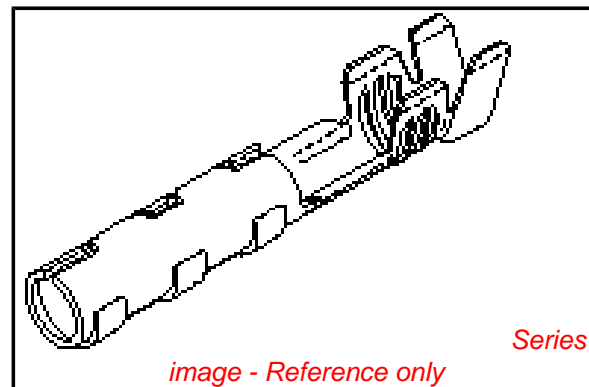


image - Reference only

**EU RoHS**

**ELV and RoHS  
 Compliant**  
**REACH SVHC  
 Contains SVHC: No**  
**Halogen-Free  
 Status  
 Not Reviewed**

**China RoHS**



**Need more information on product  
 environmental compliance?**

Email [productcompliance@molex.com](mailto:productcompliance@molex.com)  
 For a multiple part number RoHS Certificate of  
 Compliance, [click here](#)

Please visit the [Contact Us](#) section for any  
 non-product compliance questions.

**Search Parts in this Series**

[1881Series](#)

**Mates With**

16-06-0005

**Application Tooling | FAQ**

*Tooling specifications and manuals are  
 found by selecting the products below.  
 Crimp Height Specifications are then  
 contained in the Application Tooling  
 Specification document.*

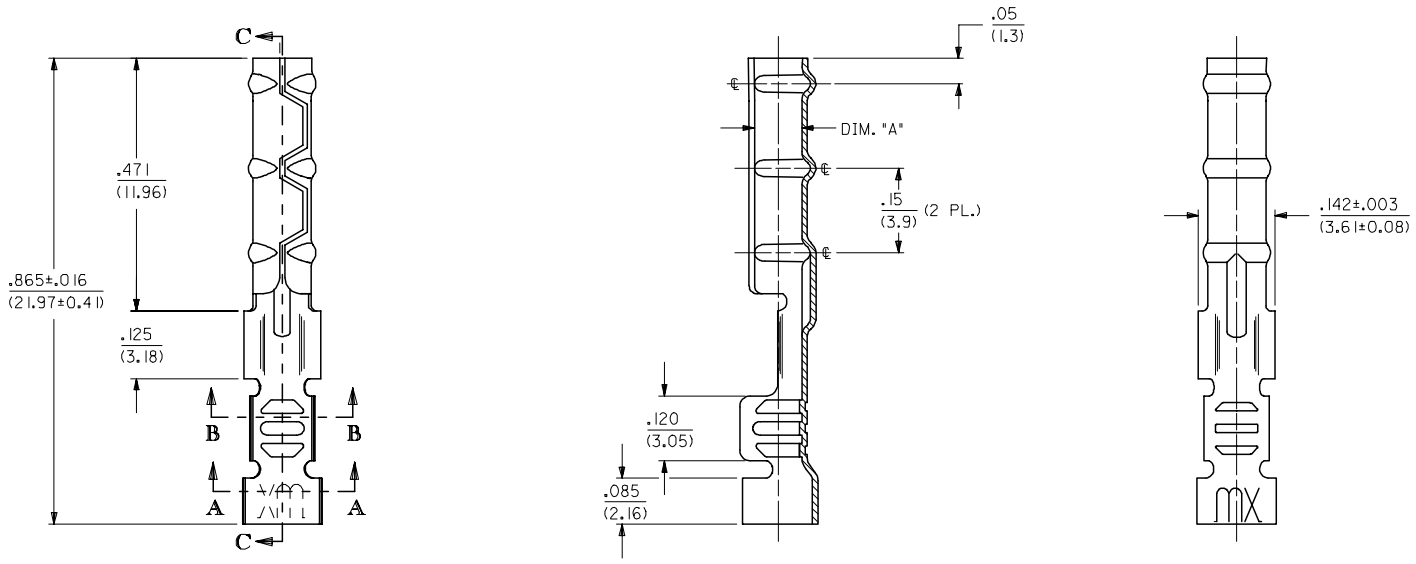
**Global**

Description	Product #
HAND CRIMP TOOL	0638117100

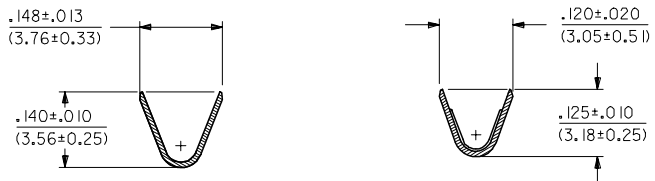
13 12 11 10 9 8 7 6 5 4 3 2 1

J I H G F E D C B A

1881-2\*\*\* TERMINAL SHOWN (16-24 AWG)  
SEE SHEET 2 FOR 1881-3\*\*\* TERMINAL



SECTION C-C



SECTION A-A

SECTION B-B

UPDATE TITLE BLOCK EC NO: UCP2006-0215 DRAWN: JLONE 2005/08/05 CHKD: ADERR 2005/08/10 APPR: FSM TH 2005/08/10 L1 REV	QUALITY SYMBOLS	$\nabla=0$ $\nabla=0$
	DESCRIPTION	
	GENERAL TOLERANCES (UNLESS SPECIFIED)	
	4 PLACES ± --- ± --- 3 PLACES ± --- ± .010 2 PLACES ± 0.25 ± .014 1 PLACE ± 0.36 ± --- ANGULAR ±1/2°	

DIMENSION STYLE	IN/MM
DRAWN BY	DATE
GWC	3/11/91
CHECKED BY	DATE
RW	3/11/91
APPROVED BY	DATE
GWF	3/11/91
MATERIAL NO.	
DOCUMENT NO.	
SD-1881-*	
DRAFT WHERE APPLICABLE MUST REMAIN WITHIN DIMENSIONS	
SIZE	C

SCALE	6:1
DESIGN UNITS	INCH
THIRD ANGLE PROJECTION	
DRAWN BY DATE GWC 3/11/91 CHECKED BY DATE RW 3/11/91 APPROVED BY DATE GWF 3/11/91	
MATERIAL NO. DOCUMENT NO. SD-1881-*	
SEE CHART	

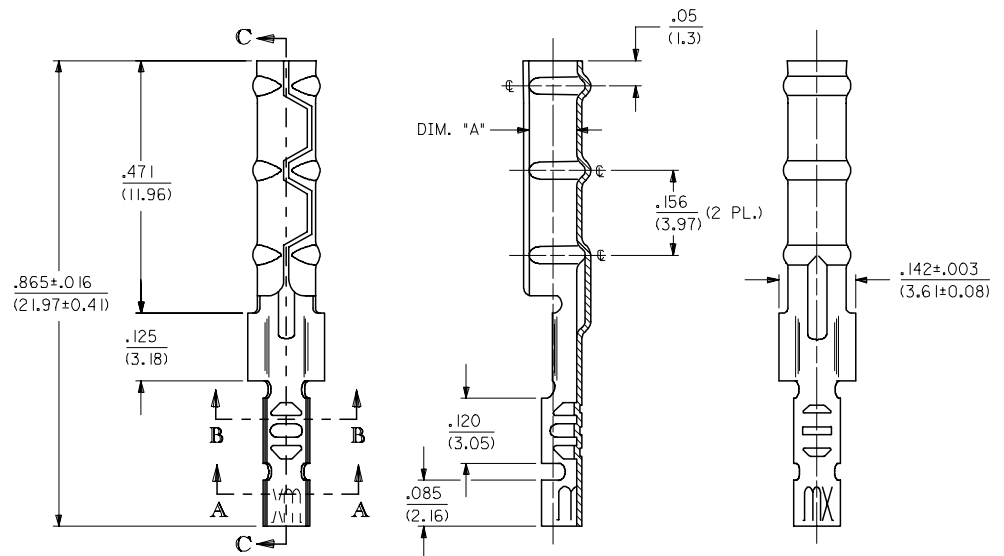
TITLE CRIMP TERMINAL SOCKET, CLASPCON	
MOLEX INCORPORATED	
SHEET NO.	1 OF 2

2	L1
1	L1
SHT/REV	

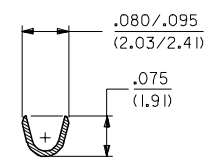
12 11 10 9 8 7 6 5 4 3 2 1

CHART			
PART NUMBER	ENG. NUMBER	DIMENSION "A" (DIA.)	
02-08-1102	1881-2L1A	.085/.090 (2.16/2.29)	
02-08-1101	1881-2C1A		
02-08-1106	1881-2L1B	.083/.088 (2.11/2.24)	OBSOLETE
02-08-1105	1881-2C1B		OBSOLETE
02-08-1104	1881-3L1A	.085/.090 (2.16/2.29)	
02-08-1103	1881-3C1A		
02-08-1107	1881-4C1A	.085/.090 (2.16/2.29)	OBSOLETE
02-08-1108	1881-4L1A		OBSOLETE

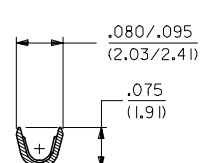
1881-3\*\*\* TERMINAL SHOWN (24-30 AWG)  
SEE SHEET 1 FOR 1881-2\*\*\* TERMINAL



SECTION C-C



SECTION A-A



SECTION B-B

**LEGEND**

1881-\*\*\*  
 CRIMP STYLE: 2 = 16-24 AWG, 3 = 24-30 AWG, 4 = 22 AWG  
 FORM: L = LOOSE, C = CHAIN  
 FINISH: (\*P) PRECEDING FINISH NO. DESIGNATES PREPLATED MATERIAL, 1 = P901 - HOT TIN DIP: .000020/(0.0005) MIN.  
 BARREL I.D.: A = .085/.090 BARREL I.D.

- NOTES:
- MATERIAL: CARTRIDGE BRASS
  - FINISH: SEE LEGEND
  - PRODUCT SPECIFICATION: N/A
  - PACKAGING SPECIFICATION: N/A
  - 1881 "CLASPCON" SERIES TERMINAL WITH THE STANDARD BARREL I.D. IS INTENDED FOR MATING TO .093/(2.36) DIA. P.C. BOARD PINS.
  - INITIAL EXTRACTION FORCE TO BE 4.0±1.5 LBS. FROM AN .093/.092 / (2.36/2.34) DIA. PIN AND 2 LBS. MIN. AFTER THE 10TH EXTRACTION ON STANDARD BARREL I.D.

OBSOLETE 02-08-1102 EC NO: UCP2006-0215 DRAWN: JLONE 2005/08/05 CHKD: ADERR 2005/08/10 APPR: FSM TH 2005/08/10 REV L1	QUALITY SYMBOLS ▽=0 ▽=0	GENERAL TOLERANCES (UNLESS SPECIFIED)		DIMENSION STYLE		SCALE	DESIGN UNITS	THIRD ANGLE PROJECTION		
		mm	INCH	IN/MM		6:1	INCH			
		4 PLACES ±---	±---	DRAWN BY	DATE	TITLE				
		3 PLACES ±---	±.010	JWC	3/11/91	CRIMP TERMINAL SOCKET, CLASPCON				
2 PLACES ±0.25	±.014	CHECKED BY	DATE	MATERIAL NO.						
1 PLACE ±0.36	±---	RW	3/11/91	DOCUMENT NO.						
ANGULAR ±1/2°		APPROVED BY	DATE	MATERIAL NO.						
		JWF	3/11/91	DOCUMENT NO.						
DRAFT WHERE APPLICABLE MUST REMAIN WITHIN DIMENSIONS		SEE CHART		SD-1881-*						
		SIZE C		THIS DRAWING CONTAINS INFORMATION THAT IS PROPRIETARY TO MOLEX INCORPORATED AND SHOULD NOT BE USED WITHOUT WRITTEN PERMISSION						