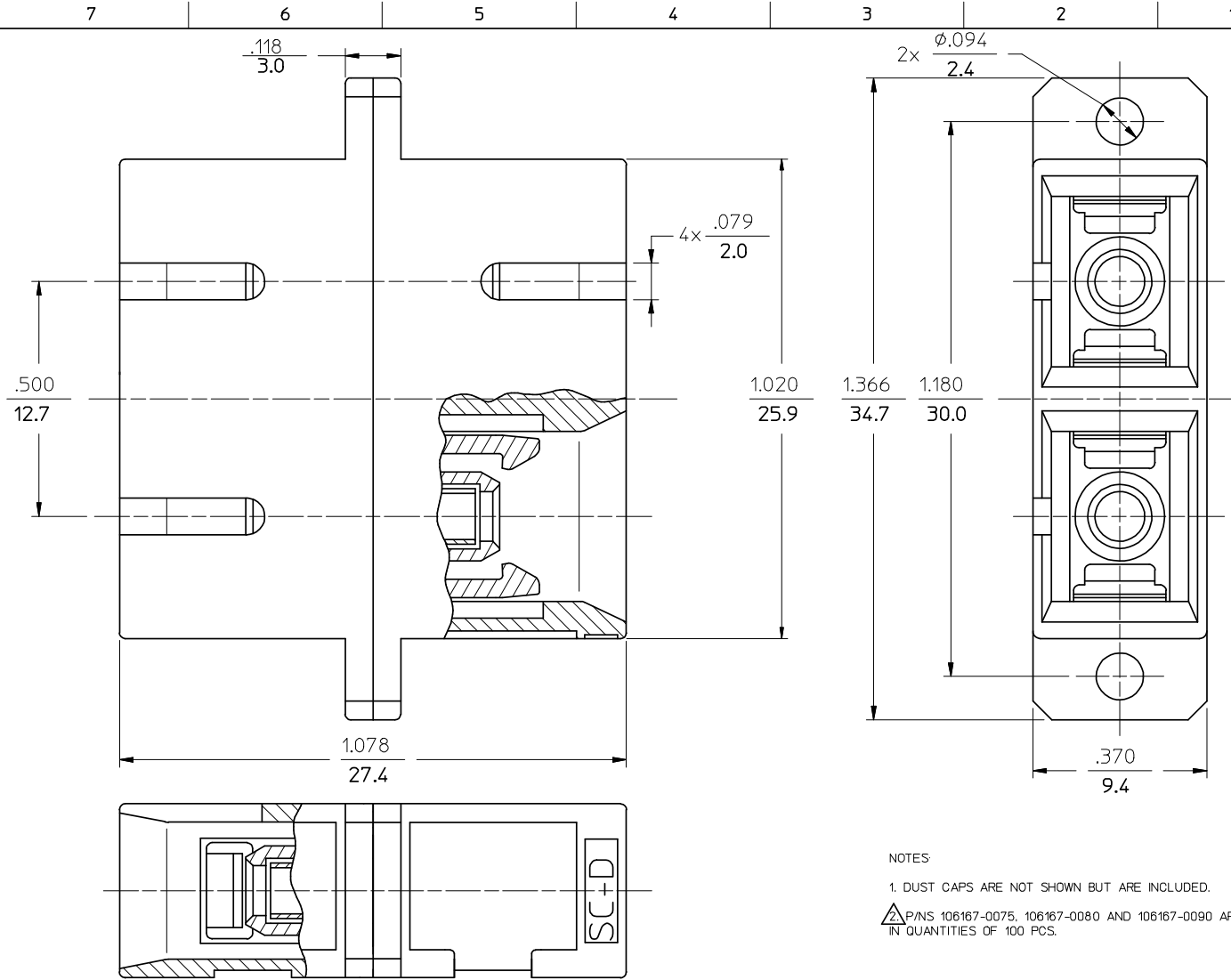
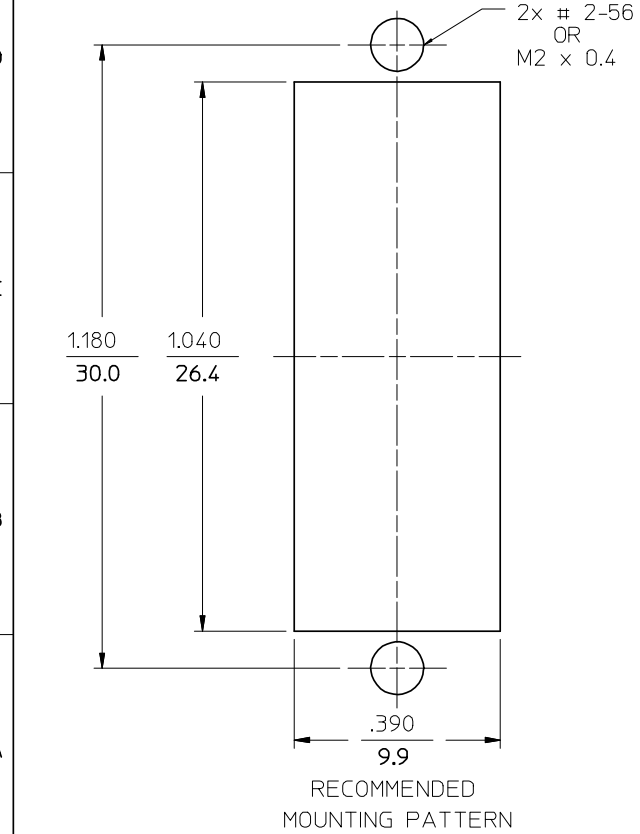


P/N OF ADAPTER	MATERIAL OF SLEEVE	TYPE	COLOR
106166-0000	ZR	SINGLE MODE	BLUE
106167-0000	PHOSPHOR BRONZE		
106167-0090	PHOSPHOR BRONZE		
106166-0010	ZR	MULTIMODE	BEIGE
106167-0010	PHOSPHOR BRONZE		BLACK
106166-0030	ZR		
106167-0030	PHOSPHOR BRONZE	SINGLE MODE	RED
106166-0040	ZR		APC
106167-0040	PHOSPHOR BRONZE	MULTIMODE	
106166-0050	ZR		BEIGE
106167-0050	PHOSPHOR BRONZE		
106167-0070	PHOSPHOR BRONZE	MULTIMODE	AQUA
106167-0075			BEIGE
106167-0080			BEIGE



NOTES

1. DUST CAPS ARE NOT SHOWN BUT ARE INCLUDED.

2. P/N'S 106167-0075, 106167-0080 AND 106167-0090 ARE BULK PACKED IN QUANTITIES OF 100 PCS.

ENTER DESCRIPTION EC NO: MF2008-0519 DRAWN: KPEVZNER CHKD: 2008/05/22 APPR: LGUMIN 2008/05/27	QUALITY SYMBOLS	GENERAL TOLERANCES (UNLESS SPECIFIED)		DIMENSION STYLE	SCALE	DESIGN UNITS	THIRD ANGLE PROJECTION	
	$\blacktriangledown = 0$ $\triangle = 0$	mm INCH 4 PLACES ± --- ± --- 3 PLACES ± --- ± --- 2 PLACES ± --- ± --- 1 PLACE ± --- ± --- ANGULAR ± 1/2°	IN/MM DRAWN BY DATE RPACIFICI 2006/01/24 CHECKED BY DATE APPROVED BY DATE	IN/MM 4:1 INCH	TITLE	DUPLEX ADAPTER (SC-D)		
	DRAFT WHERE APPLICABLE MUST REMAIN WITHIN DIMENSIONS	MATERIAL NO.	DOCUMENT NO.	MOLEX INCORPORATED				
		SEE TABLE	SD-10616X-00X0	SHEET NO. 1 OF 1				
				THIS DRAWING CONTAINS INFORMATION THAT IS PROPRIETARY TO MOLEX INCORPORATED AND SHOULD NOT BE USED WITHOUT WRITTEN PERMISSION				