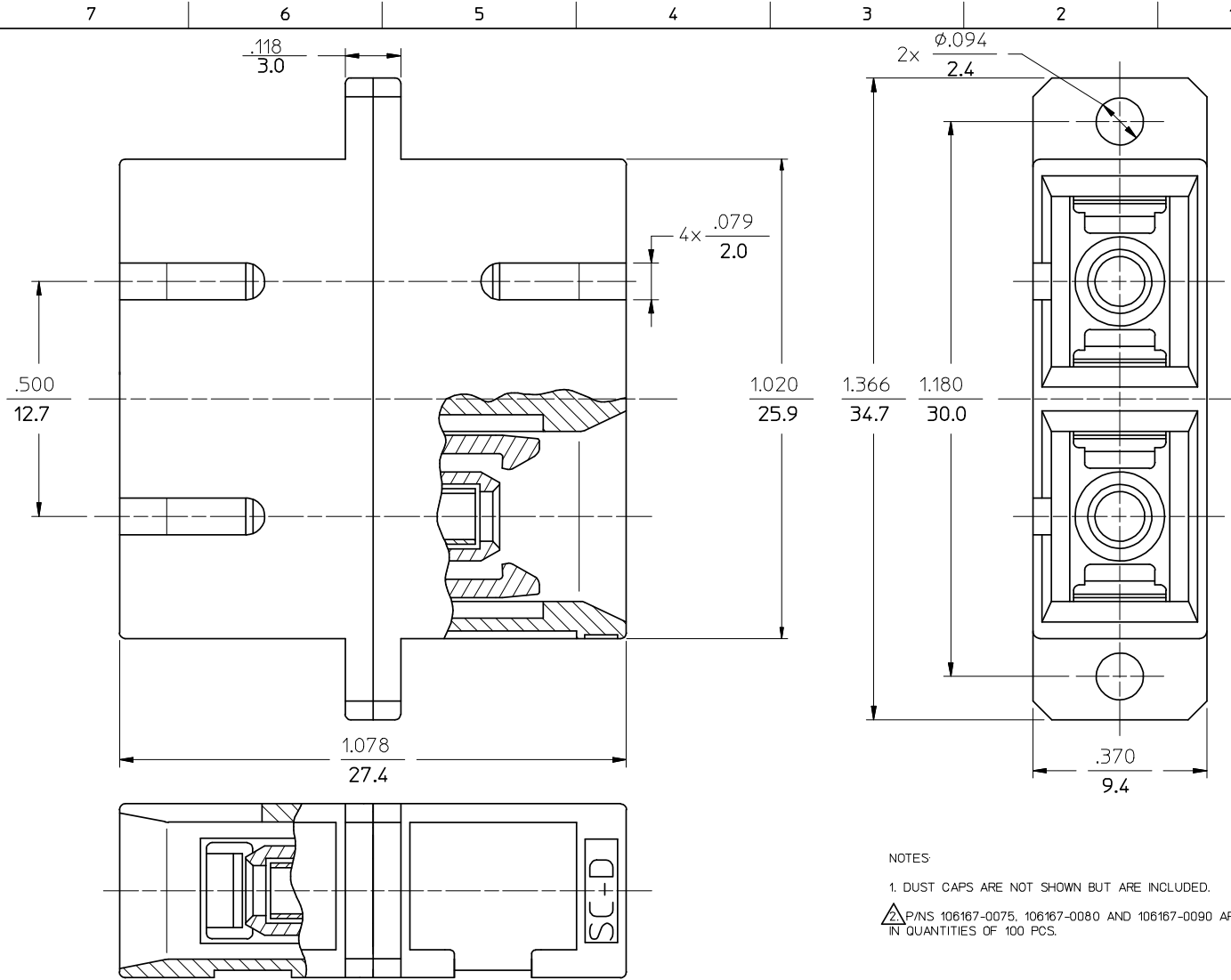
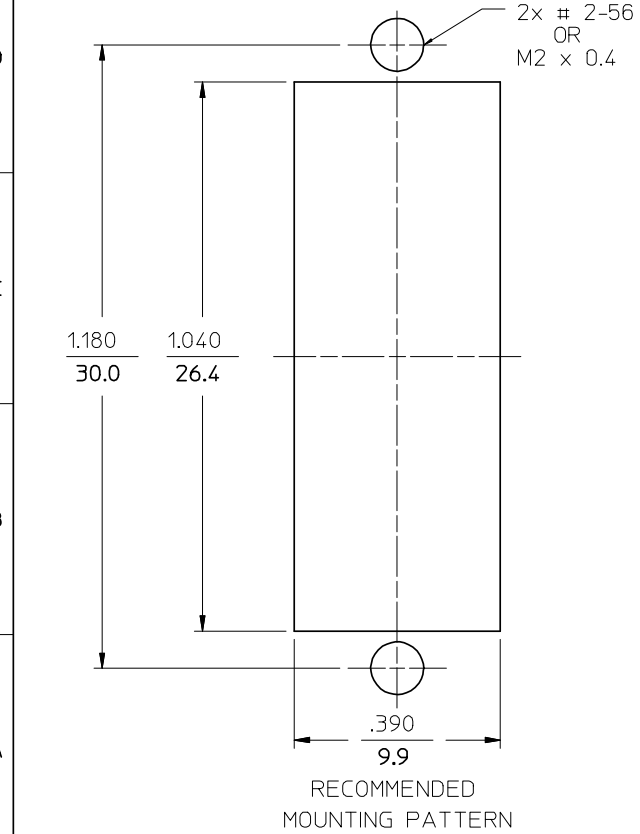


P/N OF ADAPTER	MATERIAL OF SLEEVE	TYPE	COLOR	
106166-0000	ZR	SINGLE MODE	BLUE	
106167-0000	PHOSPHOR BRONZE			
106167-0090	PHOSPHOR BRONZE			
106166-0010	ZR	MULTIMODE	BEIGE	
106167-0010	PHOSPHOR BRONZE		BLACK	
106166-0030	ZR			
106167-0030	PHOSPHOR BRONZE	SINGLE MODE	RED	
106166-0040	ZR		APC	GREEN
106167-0040	PHOSPHOR BRONZE			
106166-0050	ZR	MULTIMODE	AQUA	
106167-0050	PHOSPHOR BRONZE		BEIGE	
106167-0070	PHOSPHOR BRONZE			
106167-0075	PHOSPHOR BRONZE			
106167-0080	PHOSPHOR BRONZE			



NOTES

1. DUST CAPS ARE NOT SHOWN BUT ARE INCLUDED.

2. P/N'S 106167-0075, 106167-0080 AND 106167-0090 ARE BULK PACKED IN QUANTITIES OF 100 PCS.

ENTER DESCRIPTION EC NO: MF2008-0519 DRWN: KPEVZNER CHKD: 2008/05/22 APPR: LGUMIN 2008/05/27	QUALITY SYMBOLS	GENERAL TOLERANCES (UNLESS SPECIFIED)	DIMENSION STYLE	SCALE	DESIGN UNITS	THIRD ANGLE PROJECTION	
	▼=0 ▽=0	mm INCH 4 PLACES ±--- ±--- 3 PLACES ±--- ±--- 2 PLACES ±--- ±--- 1 PLACE ±--- ±--- ANGULAR ±1/2°	IN/MM	4:1	INCH		
		DRAFT WHERE APPLICABLE MUST REMAIN WITHIN DIMENSIONS	DRAWN BY DATE	TITLE			
			RPACIFICI 2006/01/24	DUPLX ADAPTER (SC-D)			
			CHECKED BY DATE	MOLEX INCORPORATED			
			APPROVED BY DATE	DOCUMENT NO. SD-10616X-00X0			
			MATERIAL NO. SEE TABLE	SHEET NO. 1 OF 1			
			SIZE B	THIS DRAWING CONTAINS INFORMATION THAT IS PROPRIETARY TO MOLEX INCORPORATED AND SHOULD NOT BE USED WITHOUT WRITTEN PERMISSION			